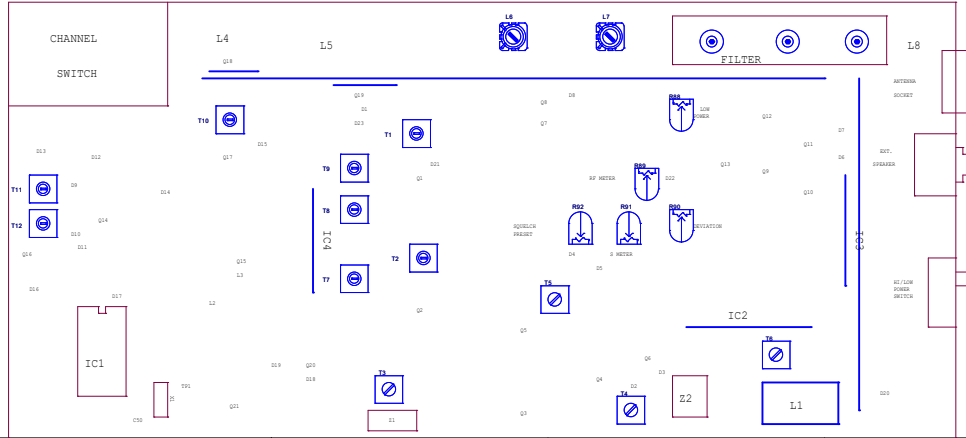


READ THE NOTES!!

FALCON/COMPACT 40

PCB = P-021A



- NOTES:**
1. THIS CAPACITOR IS EITHER 470 OR 407 IN THE 2 HOLES IMMEDIATELY TO THE REAR OF THE BOARD. IT IS FITTING L2 AND R50.
 2. THE FOLLOWING COMPONENTS WERE NOT SHOWN:

R16	C22
R17	C23
R18	C24
R19	C25
R20	C26
R21	C27
R22	C28
R23	C29
 3. NET 10 IS MOUNTED ON THE PCB, BUT NOT DESIGNED. HAS A FERRITE BEAD AND A 1N CAPACITOR (NOT SHOWN) ON EACH SIDE BEHIND THE AUDIO BOARD.
 4. THE MICROPHONE BEAD (NOT SHOWN) IS MOUNTED ON THE BOTTOM OF THE SPEAKER (NOT SHOWN) ON THE BOARD (NOT SHOWN) ON THE AUDIO BOARD.
 5. THE MICROPHONE BEAD (NOT SHOWN) IS MOUNTED ON THE BOTTOM OF THE SPEAKER (NOT SHOWN) ON THE BOARD (NOT SHOWN) ON THE AUDIO BOARD.
 6. THE CHANNEL SWITCH AND INDICATOR ARE NOT SHOWN.

THIS DIAGRAM IS AN ATTEMPT TO MAKE THE CIRCUIT EASIER TO FOLLOW THAN THE ORIGINAL. OF NECESSITY THIS MEANS THAT THE FRONT AND REAR PANEL COMPONENTS ARE NOT DRAWN TOGETHER (AS ON THE ORIGINAL) BUT ARE DRAWN WHERE REQUIRED - I'M SURE YOU CAN FIGURE OUT WHERE THEY ARE. :-)

Copyright:
 This diagram is my copyright. You are welcome to use the diagram for your own personal use and to use it to repair radios commercially, however you are not permitted to publish the diagram by any means (electronically, hardcopy or otherwise) without paying royalties to me (Colin Hinson). The website <http://www.cbtricks.com> has my permission to host this pdf document.