

**Please do not upload this copyright pdf document to any other website. Breach of copyright may result in a criminal conviction.**

This Acrobat document was generated by me, Colin Hinson, from a document held by me. I requested permission to publish this from Texas Instruments (twice) but received no reply. It is presented here (for free) and this pdf version of the document is my copyright in much the same way as a photograph would be. If you believe the document to be under other copyright, please contact me.

The document should have been downloaded from my website <https://blunham.com/Radar>, or any mirror site named on that site. If you downloaded it from elsewhere, please let me know (particularly if you were charged for it). You can contact me via my Genuki email page: <https://www.genuki.org.uk/big/eng/YKS/various?recipient=colin>

**You may not copy the file for onward transmission of the data nor attempt to make monetary gain by the use of these files. If you want someone else to have a copy of the file, point them at the website. (<https://blunham.com/Radar>). Please do not point them at the file itself as it may move or the site may be updated.**

It should be noted that most of the pages are identifiable as having been processed by me.

---

I put a lot of time into producing these files which is why you are met with this page when you open the file.

In order to generate this file, I need to scan the pages, split the double pages and remove any edge marks such as punch holes, clean up the pages, set the relevant pages to be all the same size and alignment. I then run Omnipage (OCR) to generate the searchable text and then generate the pdf file.

Hopefully after all that, I end up with a presentable file. If you find missing pages, pages in the wrong order, anything else wrong with the file or simply want to make a comment, please drop me a line (see above).

It is my hope that you find the file of use to you personally – I know that I would have liked to have found some of these files years ago – they would have saved me a lot of time !

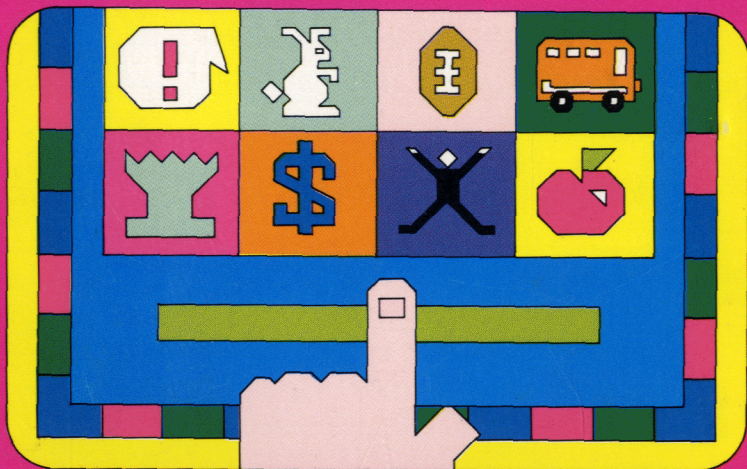
Colin Hinson

In the village of Blunham, Bedfordshire.



# Demonstration

*Provides an exciting, easy-to-use demonstration of the features and benefits of the Texas Instruments Home Computer.*



As this manual was designed for the U.S. market, the warranty conditions described herein are not applicable in the U.K. The only valid Guarantee Conditions are those set forth in the "Users Reference Guide" accompanying the Home Computer.

---

# Quick Reference Guide

---

To take full advantage of the features and benefits of this Command Module, please read this manual completely. Important keystroke sequences are summarized here for your "quick reference."

Press

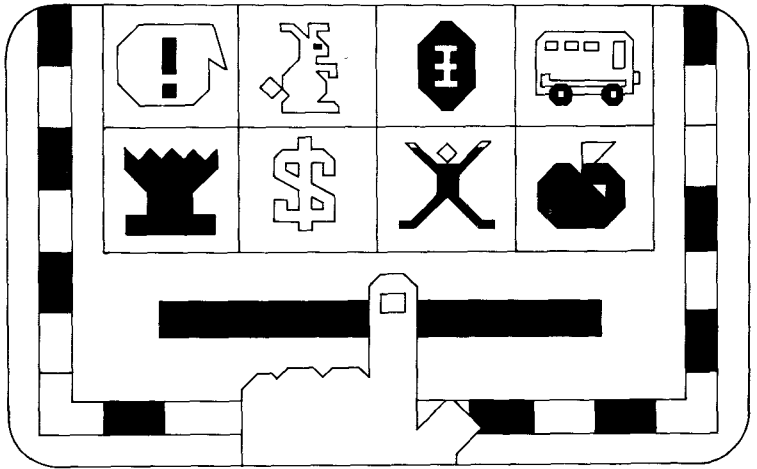
Action

- |                |  |
|----------------|--|
| <b>SHIFT A</b> | Holding down the <b>SHIFT</b> key and pressing and holding the <b>A</b> key resets the module to the <i>Introduction Segment</i> and starts it. (It may take a few seconds for the module to react.)       |
| <b>SHIFT B</b> | Moves to the <i>Information Segment</i> and starts it.   |
| <b>SHIFT C</b> | Moves to the selection screen which <i>allows the user to select one of four demonstrations</i> .  |
| <b>SHIFT D</b> | Moves to the beginning of the <i>Wrap-up/Close Segment</i> and starts it.<br><br>( <i>Note: Once started at any of these four points, the module will continue operating normally from these points.</i> ) |
| <b>S</b>       | Pressing and holding the <b>S</b> key will stop the module action – freezing the screen contents. Releasing the <b>S</b> key resumes the module action. (Just remember "S" for "stop.")                    |
| <b>SHIFT Q</b> | This tells the computer to leave the DEMONSTRATION module and return to the Home Computer master title screen. (Just remember "Q" for "quit.")   |
-



TEXAS INSTRUMENTS  
HOME COMPUTER

# Demonstration



This *Solid State Software*™ Command Module is designed to be used with the Texas Instruments Home Computer. Its preprogrammed solid-state memory expands the power, versatility, and capability of your Home Computer.

Copyright © 1979 Texas Instruments Incorporated  
Command Module program and data base contents  
copyright © 1979 Texas Instruments Incorporated.  
See important warranty information at back of book.

---

# TEXAS INSTRUMENTS HOME COMPUTER

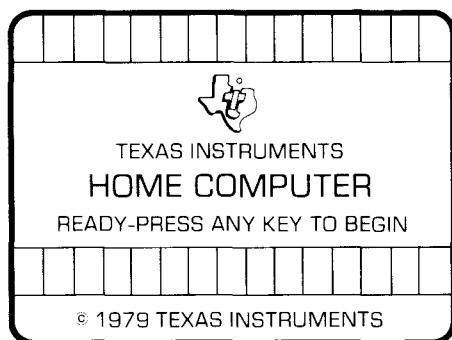
---

The DEMONSTRATION module has been carefully developed to provide a quick, thorough, enjoyable, and easy-to-use demonstration of the Texas Instruments Home Computer. Basically, you follow the simple steps outlined below to insert the module into the machine, and it does the rest! Once started, the module takes care of itself – no complex operations are needed. The module is flexible enough to allow for a variety of tailor-made experiences that can be easily selected.

## USING THE SOLID STATE SOFTWARE™ COMMAND MODULE

First, the Home Computer should be carefully unpacked, set up and adjusted – as described in the step-by-step instructions included in the *Read This First* booklet packed with the unit. Once set-up is complete, follow these simple steps:

1. *If the computer is OFF*, slide the module into the slot on the console, and turn the computer on. The master title screen shown below should then appear.



*If the computer is ON*, hold down the **SHIFT** key and press **Q** to make the master title screen appear. *Then* slide the Command Module into the slot on the console.

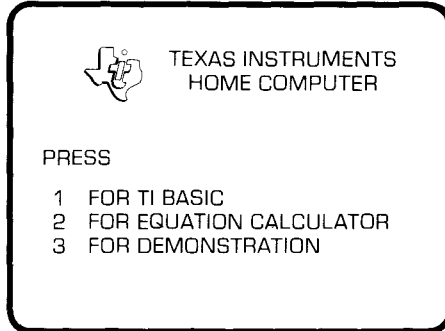


---

## Demonstration

---

2. Press any key to make the master selection list appear. The title "For Demonstration" will be third on the list:



3. Press the **3** key to select the **DEMONSTRATION** module and to start it into operation.

*(Note: To remove the Command Module, first return the computer to the master title screen by pressing **SHIFT Q**. Then remove the module from the slot.)*

That's all there is to it!

### THE MODULE IS AUTOMATIC

Once the module is inserted and started, it runs by itself and requires little or no outside intervention. Note that in a demonstration situation the module can function independently or work with you to illustrate the Home Computer's features and benefits. For those who plan to work with the module, a brief description of its contents and special features follows.

*Special Note:* The timing of each module sequence has been specially set to allow for easy, relaxed reading and interaction. If, however, you'd like to stop the module

---

# TEXAS INSTRUMENTS HOME COMPUTER

---

action for a moment, just press and hold down the **S** key. (It may take a moment for all screen action to stop.) To resume, just release the **S** key. This feature can be handy for reviewing screen contents in detail, or while discussing specific features with a viewer.

## DEMONSTRATION MODULE FEATURES:

The module is divided into four basic parts which contain a variety of information and progressive "hands-on" examples and demonstrations. The module automatically goes through each of these parts on its own, inviting the user to get involved as it proceeds. In this way someone with no computer experience can explore at his or her own pace, while someone with more experience can go right to information or demonstrations of interest. The four segments are described below:

### **A. Introductory Segment (2½-3 minutes)**

This is a continuous, eye- and ear-catching display of the computer's basic features — with special focus on the exciting things it can do with color and sound. This complete sequence acts like a short TV commercial and is sure to attract lots of attention in any setting.

The sequence begins by introducing the Home Computer to the viewer and illustrating its many uses in the home. It explains how the computer can help save money by aiding in sound decisions on personal financial matters. Other screens follow that illustrate the unique educational experiences the computer offers in topic areas ranging from grammar to arithmetic. The use of the computer in developing exercise plans is then shown, followed by some exciting and challenging entertainment applications: computer chess and football.



At the end of this segment, viewers are asked if they'd like to join in the fun – to learn a little more and begin interacting with the computer. This request is made right on the screen; the viewer simply presses the Space Bar to see more. If the user chooses to press the Space Bar, the module moves on to the next part of the demonstration. If the Space Bar is not pressed, the Introduction sequence resumes after a short delay. The module will continuously operate in this introductory segment – automatically – until some keyboard response is made.

### **B. Information Segment (3 minutes)**

When the interested viewer presses the Space Bar as requested in the previous segment, a more thorough and illustrative presentation begins, treating the features and benefits of the Home Computer in more depth. This presentation includes descriptive sequences which cover the various roles of the computer, including:

- *Home Financial Planner:* Helps with household budgets, mortgages and loans, investments and taxes, savings and checking accounts – and more.
- *Teacher/Educator:* Previews exciting highly visual activities which teach the alphabet, spelling, and basic arithmetic.
- *Health Advisor:* Helps to plan fitness programs – and to keep track of progress in “staying with it.”
- *Entertainment:* Adds new dimension to entertainment with stimulating and challenging games and activities. Color art, football, and chess are illustrated.

The Command Module concept, and the special ease it brings to using the computer, is also demonstrated.



---

# TEXAS INSTRUMENTS HOME COMPUTER

---

At this point the viewer is asked to really get involved – with an interactive demonstration. A selection list is presented that looks like this:

CHOOSE THE DEMO  
YOU'D LIKE TO SEE.

PRESS:

- 1 FOR HOME FINANCE
- 2 FOR EDUCATION
- 3 FOR ENTERTAINMENT
- 4 FOR A LOOK AT MY  
SPECIFICATIONS

If the viewer presses one of the keys, a more detailed interactive demonstration will be presented. (If no key is pressed, after a short delay the module will automatically advance to the wrap-up segment of the presentation – discussed later.)

## **C. Demonstration Segment (about 1-2 minutes each)**

Here, the viewer has an opportunity to interact with the machine and see just how easy working with a computer can be. The demonstration shown depends on the key the viewer presses:

### **1** *Home Finance*

This demonstration is an example of what a powerful tool the Home Computer can be in helping plan finances. A loan situation is completely analyzed for the viewer. He or she is asked, in plain English, for some simple example information. The Home Computer analyzes the loan by calculating monthly payments, total interest paid, total actual amount paid back – and presents an interest/principal table – all in seconds!



## 2 *Education*

Here a typical activity taken from the BEGINNING GRAMMAR Command Module is presented. It illustrates how much excitement and depth the Home Computer can bring to learning.

## 3 *Entertainment*

Here a short preview of the challenge and excitement of the football module is presented. The viewer selects a play and challenges the computer's defense. The play is actually carried to completion – with a look at the "touchdown" reward.

## 4 *Specifications*

For the more knowledgeable viewer who wants a quick look at detailed specifications for the Texas Instruments Home Computer, several screens of information are presented.

At the end of any demonstration, the viewer gets a chance to see the other selections available in the module. If the viewer chooses not to see one of these, the module moves to the "wrap-up" or closing segment.

### **D. "Wrap-up" or Closing Segment (30 seconds)**

This segment completes the demonstration by describing the accessories available (or coming) for the Home Computer, as well as those Command Modules available right now and those planned for the future.

---

# TEXAS INSTRUMENTS

## HOME COMPUTER

---

*Important Note:* After the wrap-up or any time the module asks for a viewer response and receives none, the module automatically continues and eventually cycles back to the introduction segment. The module has been expressly developed to avoid "hang-ups" or unexplained "pieces" of a demonstration on the screen for any extended period of time.

### DEMONSTRATION MODULE SPECIAL FEATURES:

As explained before, this module has been expressly designed to operate automatically and to function with little or no operator intervention. For the demonstrator who wishes to see or show specific segments of the presentation, the special features listed below are built in. Just press the keys listed:

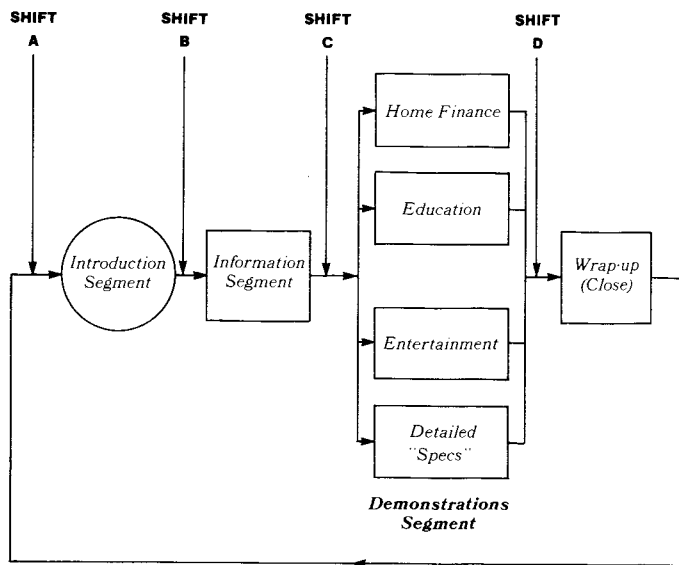
- SHIFT A** Holding down the **SHIFT** key and pressing and holding the **A** key resets the module to the *Introduction Segment* and starts it. (It may take a few seconds for the module to react.)
  - SHIFT B** Moves to the *Information Segment* and starts it.
  - SHIFT C** Moves to the selection screen which *allows the user to select one of four demonstrations*.
  - SHIFT D** Moves to the beginning of the *Wrap-up/Close Segment* and starts it.
- (*Note:* Once started at any of these four points, the module will continue operating normally from these points.)



**S** Pressing and holding the **S** key will stop the module action – freezing the screen contents. Releasing the **S** key resumes the module action. (Just remember “S” for “stop.”)

**SHIFT Q** This tells the computer to leave the DEMONSTRATION module and return to the Home Computer master title screen. (Just remember “Q” for “quit.”)

These features are summarized in chart form below. To get right to different DEMONSTRATION module segments, just press these keys:



**S** stops the module at any point. Press and hold **S** to stop, release to continue. **SHIFT Q** returns to the master title screen.

---

## TEXAS INSTRUMENTS HOME COMPUTER

---

### CARING FOR THE COMMAND MODULE

*Solid State Software*™ Command Modules are durable devices, but they should be handled with the same care you would give any other piece of electronic equipment. Keep the module and its recessed contacts clean and dry.

**CAUTION:**

The contents of a Command Module can be damaged by static electricity discharges.

Static electricity build-ups are more likely to occur during the cold winter months (or in areas with very dry climates) when the natural humidity of the air is low. We've all had the experience of walking across a carpet, reaching for a metal doorknob, and having a quick, painful spark jump from our fingertips to the metal surface. This is static electricity. To avoid possible damage to the Command Module, just touch any metal object (a doorknob, desk lamp, etc.) before handling the module. If static electricity is a problem in your area, you may want to purchase a special carpet treatment that reduces static build-up. These commercial preparations are usually available from local hardware and office supply stores.



### IN CASE OF DIFFICULTY

If the Command Module activities do not appear to be operating properly, return to the master title screen by pressing **SHIFT Q**. Withdraw the module, reinsert it carefully, and press any key to make the master selection list appear. The title of the Command Module should show up in the third position. Press **3** to select the module.

An automatic reset feature is built into the computer. Anytime a module is inserted into the console, the computer should return to the master title screen. (*Note:* All data or program material you have entered will be erased.) In rare instances, if the module is accidentally removed from the console while the module contents are being used, the computer may behave unpredictably. To restore the computer to normal operation, turn the computer console off. Wait a few seconds. Then reinsert the module, and turn the computer on again.

If you have any difficulty with your Texas Instruments Home Computer or the DEMONSTRATION Command Module, please contact the dealer from whom you purchased the unit and/or module for service directions.

Additional information concerning use and service can be found in your Texas Instruments Home Computer *User's Reference Guide*.

This module is designed to provide a complete, automatic, and easy-to-use demonstration of the various features of the Texas Instruments Home Computer. A preview of the *Solid State Software*<sup>™</sup> Command Modules is included.

**Demonstration** module presentations provide a carefully sequenced overview of the TI Home Computer and the Command Module concept. It's fully automatic and requires no operator intervention once inserted in the computer.

The module is divided into four segments:

- **Introductory Segment** – Eye- and ear-catching "attention getter" with general information.
- **Information Segment** – In-depth presentation on specific applications of the computer in home finance, education, family health, entertainment.
- **Demonstration Segment** – Here the viewer is led step-by-step through demonstrations in:
  - Home Finance – Loan Analysis
  - Education – Beginning Grammar
  - Entertainment – Football
  - Detailed specifications of the computer.
- **Closing Segment** – Introduces accessories planned and available, lists growing Command Module library.

The Demonstration module gives an exciting overview of the TI Home Computer. With 16-color animated graphics and more than four full octaves of sound at its disposal, the computer itself serves as its own best spokesperson!

***Adds 24K bytes of active memory with stored program to your TI Home Computer.***

Command Module program and data base contents  
copyright © 1979 Texas Instruments Incorporated.



**TEXAS INSTRUMENTS**  
INCORPORATED