

Please do not upload this copyright pdf document to any other website. Breach of copyright may result in a criminal conviction.

This Acrobat document was generated by me, Colin Hinson, from a document held by the Henlow Signals Museum, believed to be out of copyright. It is presented here (for free) and this pdf version of the document is my copyright in much the same way as a photograph would be. If you believe the document to be under other copyright, please contact me.

The document should have been downloaded from my website <https://blunham.com/Radar>, or any mirror site named on that site. If you downloaded it from elsewhere, please let me know (particularly if you were charged for it). You can contact me via my Genuki email page: <https://www.genuki.org.uk/big/eng/YKS/various?recipient=colin>

You may not copy the file for onward transmission of the data nor attempt to make monetary gain by the use of these files. If you want someone else to have a copy of the file, point them at the website. (<https://blunham.com/Radar>). Please do not point them at the file itself as it may move or the site may be updated.

It should be noted that most of the pages are identifiable as having been processed by me.

I put a lot of time into producing these files which is why you are met with this page when you open the file.

In order to generate this file, I need to scan the pages, split the double pages and remove any edge marks such as punch holes, clean up the pages, set the relevant pages to be all the same size and alignment. I then run Omnipage (OCR) to generate the searchable text and then generate the pdf file.

Hopefully after all that, I end up with a presentable file. If you find missing pages, pages in the wrong order, anything else wrong with the file or simply want to make a comment, please drop me a line (see above).

It is my hope that you find the file of use to you personally – I know that I would have liked to have found some of these files years ago – they would have saved me a lot of time !

Colin Hinson

In the village of Blunham, Bedfordshire.

No. 54 PAGE TELEPRINTER

Creed & Company Limited

TELEGRAPH HOUSE
CROYDON, ENGLAND

Telegraphic Address:
CREDO, TELEX, CROYDON

Telephone:
MUNICIPAL 2424

Telex: 28836



AMENDMENTS TO PART LIST NO. 1054R (1ST EDITION)

MODEL 54 PAGE TELEPRINTER

This Technical Information Supplement amends the text of the above Part List to conform with Teleprinters now being supplied.

<i>Page</i>	<i>Index Letter</i>	<i>Part No.</i>	<i>Part Name</i>	<i>Part No.</i>	<i>Part Name</i>
2	AY	CD1409	3-Conductor Cord	CD1409/3	3-Conductor Cord
7	X3	PS2141-1	Std. 6BA Screw	PS2125-1	Std. 6BA Screw
7	AD	PW5046	Special Washer	PW1017-1	Std. 8BA Washer
8	J	1838/160	Trip Lever Extension	1838/160A	Trip Lever Extension
10	AE	3740/13A	Jumper Shaft C.P.	1838/158	Jumper Shaft C.P.
10	R	3740/12	Trip Lever	3740/12A	Trip Lever

ITEMS TO BE DELETED

<i>Page</i>	<i>Following Index Letter</i>	<i>Part No.</i>	<i>Part Name</i>
12	Z	1831/398	Carriage Spindle C.P.

N.B.: *Carriage Spindle C.P. 1831/342 (Item 2) is now standard for both Model 7 and 54 Teleprinters*

ITEMS TO BE INSERTED

<i>Page</i>	<i>Following Index Letter</i>	<i>Part No.</i>	<i>Part Name</i>
2	AJ	{ 3805/130 3805/131 3805/126	Lifting Hook and Guide (R.H.) Lifting Hook and Guide (L.H.) Lifting Handle C.P.
10	S	3740/13A	Jumper Shaft C.P. (<i>For machines fitted with Two-colour Printing only</i>)

NO. 54 TELEPRINTER

The No. 54 Teleprinter consists of:-

Part No.	Part Name	
S.3702, Gr. 3	Teleprinter Sub-Assembly	See page 1.
S.3805A	Page Attachment Unit	See page 12.
S.3813	Silencing Cover and Sub Base	
1841/11	Type 'N' Keyboard	See Part List 1047K.
PS.4583-1	Fibre Coupling Disc	
PW.4031	Std. 5/16" BSF Screw	} For securing Keyboard Unit. 2 per machine.
	Spring Washer	
	Two-colour printing facility. (Optional facility).	See page 10.
	Reperforating Attachment. (Optional facility).	See Provisional Part List No.378:

NO. 54 TELEPRINTER SUB-ASSEMBLY

(See Fig. 1)

Index Letter	Part No.	Part Name	
A	S.3803, Gr. 1	Main Base Unit	See Page 3.
B	S.1926, Gr. 3	Combination Head Unit	(for machines without Reperforating Attachment) See Part List No. 1078
	S.1926, Gr. 5 or	Combination Head Unit	(for machines with Reperforating Attachment) See Provisional Part List No. 3785
	PS.1390-1	Std. 2BA Screw	(2 per set) for securing Item B.
C	S.2936, Gr. 2	Typehead Unit	(see T.I.S. No. 7 but with set of chamfered Types 1827/40)
D	S.3769A	Control Lever Unit	See Page 10.
	PS.1354-1	Std. 2BA Screw	(2 per set) for securing Item D.
E	S.3750	Cam Unit, Type 3	(Overlap pattern) See Part List No. 3750.
	PS.1390-1	Std. 2BA Screw	(3 per set) for securing Item E.
F	S.3767	Typehammer Unit	See Part List No. 1078.
	PS.5289	Special Screw	} for securing Item F.
	PW.1013-1	Std. 6BA Washer	
	PW.2037	Std. 6BA Spring Washer	
G	1828/49	Ribbon Feed Bracket (R.H.) C.P.	} See Part List No. 1078.
H	1828/48	Ribbon Feed Bracket (L.H.) C.P.	
	PS.1354-1	Std. 2BA Screw	(2 per Bracket) for securing Items G and H.
J	S.2848A	Operating Electromagnet Unit, Type 3.	See Part List No. 1078.
	PS.1456-1	Std. 2BA Screw	(2 per set) for securing Item J.
K	S.3808	Starter Switch Control Unit	See Page 6.
		Std. 2BA Screw	(2 per set) for securing Item K.
L	Ref. 26	Motor Unit	(universal for any same AC and DC voltage) - state voltage and frequency.
	BO.2874	Ballrace	(2 per set) included in Motor Unit.
		Spare Motor Brush and Spring C.P.	See Part List No. 1078.
M	S.1910	Governor Unit	(Series, 5/16" Bore, 3,000 r.p.m.). See Part List No. 1078.
N	1841/67	Governor Brush Cover.	
O	PS.2045-1	Std. 6BA Screw	} 2 of each per set for securing Item N to Motor Sub-Base.
P	PW.2037	Std. 6BA Spring Washer	
Q	1841/68	Governor Slip Ring Cover.	
R	PS.1659-1	Std. 4BA Screw	} 2 of each per set for securing Item Q.
S	PW.1009-1	Std. 4BA Washer	
	1841/11	Coupling Disc (S.R.B.F.).	See Part List No. 1078, page 15, Item Q.
	1841/7C	Driving Disc	(secured to end of Motor Spindle).
	PS.1765-1	Std. 4BA Screw	} for securing Driving Disc.
	PW.2025	Std. 4BA Spring Washer	
T	3808/36	Mainshaft C.P.	(forms part of Item K) See Page 8.
	PS.1162-1	Std. 1BA Screw	} for securing Mainshaft Bearing Bracket to Cam Unit.
	PW.2009	Std. 1BA Spring Washer	
U	1841/81	Electromagnet Link C.P.	(replaces Item LL in Part List No. 3750).
V	1841/20	Ink Ribbon	(Black).
	1841/19	or Ink Ribbon	(Purple).
	BO.3049	or Ink Ribbon	(red and black for two-colour printing).

NO. 54 TELEPRINTER SUB-ASSEMBLY (CONTINUED)

<i>Index Letter</i>	<i>Part No.</i>	<i>Part Name</i>
	1841/21	Ink Ribbon Spool.
W	1836/340	Cover L.H.
X	1836/344	Cover R.H.
Y	PS.2069-1	Std. 6BA Screw (7 per set) for securing Items W and X to Base Casting.
Z	1836/342	Rear Cover.
AA	PS.1676-1	Std. 4BA Screw (2 per set) for securing Item Z to Base Casting.
AB		A/B Rockshaft Assembly. See Page 8.

MAIN BASE UNIT SUPPORT CASTINGS

AC	3803/3	Main Base Support Casting (R.H.)
AD	3803/15	Main Base Support Casting (L.H.)
AE	3803/5	Tie Bar
AF	PS.4179-1	Std. ¼" Whit. x ¾" long Screw (4 per set) for securing Items AC, AD and AE to Main Base Casting.
AG	PS.4182-1	Std. ¼" Whit. x 1" long Screw (2 per set) for securing Item AE to Main Base.
AH	PS.5032	Abutment Screw
AJ	PN.1509-1	Std. 4BA Locknut } 2 of each per set for Keyboard Abutments.

INTERNAL PLUGS AND CORDS (Power and Signalling)

	3803/1	Plug Mounting Plate and Internal Cords C.P., comprises:-
AK	3803/7	Plug Mounting Plate.
AL	3803/8	Fixing Angle Bracket (2 per set)
	CD.1415	Internal 3-way Power Cord and Plug C.P., includes:-
AM	BO.3239	4-point Plug.
	CD.1411	3-conductor Cord.
	PK.1097	Cable Clip (for 3-conductor Cord)
	CD.1412	Internal 12-point Plug and Signal Cord C.P., includes:-
AN	BO.3392	12-point Plug.
	CD.1416	12-conductor Cord.
	PK.1142	Cable Clip (for 12-conductor Cord).
	PS.1694-1	Std. 4BA Screw
	PW.2026	Std. 4BA Spring Washer
	PN.1009-1	Std. 4BA Nut
AO	PS.1696-1	Std. 4BA Screw
AP	PS.1825-1	Std. 4BA Screw
AR	PW.2026	Std. 4BA Spring Washer
AS	PN.1009-1	Std. 4BA Nut
AT	PB.4271	Bush (2 per set)
AU	1836/353	Cover (for tags of Internal Plugs)
AV	3803/16	Plug Guard.
AW	PS.1687-1	Std. 4BA Screw (8 per set for securing Items AK, AU and AV).

} 2 of each per set for securing Cable Clips.

} 2 of each per set

} 4 per set

} for securing Plugs to Item AK.

EXTERNAL CORDS AND PLUGS (Power and Signalling)

	CD.1405	External 3-way power cord and plug C.P., includes:-
AX	BO.3240	4-point Socket (Plugs into Teleprinter).
AY	CD.1409	3-conductor Cord (3 ft. long).
	BO.2677	3-pin, 5-amp. Plug.
AZ	3835/384	Clip (for locking 4-point Socket onto 4-point Plug).
	BO.2670	3-point Socket (for 3-pin, 5-amp. Plug BO.2677).
	CD.1410	External 12-way Signal Cord and Plug C.P., includes:-
BA	BO.3391	12-point Socket (Plugs into Teleprinter).
BB	CD.1408/3	12-conductor Cord (3 ft. long).
	BO.2693	12-point Plug (Plugs into line socket).
	BO.2694	12-point Socket (for 12-point Plug BO.2693).

CARRIAGE END-OF-LINE LAMP

BC	BO.2514	6-volt, 0.5 amp. MES 15 mm. Bulb.
BD	2085/101	Lamp Support Bracket C.P., includes:-
	2085/100	Bracket.
	BO.2673	Lampholder.

UNDER-BASE PROTECTIVE COVER

BE	3803/2	Under-Base Insulating Cover.
BF	PS.7078	Special Screw (2 per set) for securing Item BE.

MAIN BASE UNIT (TYPE 2) S.3803 MODIFIED FOR NO. 54 TELEPRINTER

See diagram Fig. 1 and Addendum No. 4 (October, 1953)
to Part List No. 1078 for No. 7 Teleprinter

N.B.: The diagram shows only the new or modified items, all of which have their index letters prefixed with the letter 'N'.
Where these items have a correspondence with the old items, the index letters for the old items are used for the new items, but prefixed with the letter 'N'.
Old items which are not required are marked in this list as 'NOT WANTED'.

NOTE: ONLY NEW, MODIFIED OR UNWANTED ITEMS ARE REFERRED TO BELOW. ALL OTHER ITEMS IN ADDENDUM NO. 4 APPLY.

MAIN BASE ETC.

Page 2 of Addendum No. 4

Old Addendum No. 4	New Diagram Fig. 1	Part No.	Part Name	
A		3803/13	Main Base Assembly (replaces 1836/406)	} NOT WANTED
B		1836/69	Rubber Foot	
		1836/134	Pillar	
		1836/247	Pillar	
C		P.S.5590	Shouldered Screw, short	
D		P.S.5538	Shouldered Screw, long	
		1836/244A	Keyboard Support Plate C.P. (R.H.)	
		1836/246A	Keyboard Support Plate C.P. (L.H.)	
		P.S.5535	Shouldered Screw	
		P.W.5205	Special Washer	
E		1836/68A	Dust Cover Guide C.P. (R.H.)	
F		1836/74A	Dust Cover Guide C.P. (L.H.)	
Following P		1836/133	Cover Earthing Spring	
		P.W.2045-1	Std. 6BA Screw	
		P.W.1013-1	Std. 6BA Washer	

MOTOR BASE UNIT

U	NU	S.1824A	Motor Base Unit, modified by:-	
		1824/1A	Motor Base Casting	} Extra holes
AC		1824/39A	Motor Support Plate C.P.	

GOVERNOR R.I.S. FILTER UNIT

AP		S.2942B, Gr. 1	Governor R.I.S. Unit, modified by:-
AV		2942/20	Governor Filter Cover (deeper)

GOVERNOR RESISTOR

BX		1836/333A	Resistor Shield C.P. (portion cut off from one corner).
CD		1836/331	Cover Plate C.P. } NOT WANTED
CE		P.S.2045-1	Std. 6BA Screw }

STARTER SWITCH

CJ	NCJ	1836/355	Operating Shaft Bridge (adjustable pattern) replaces 1836/1;
----	-----	----------	--------------------------------------------------------------

ANSWER-BACK ALARM (only for machines fitted with 'M' Keyboard)

CS		1836/32	A/B Alarm Operating Lever C.P.	} NOT WANTED
CT		23956A	Locking Ring	
CU		P.P.7600	Shouldered Pin	
CV		P.B.1065	Shouldered Bush	
CW		CF.1501	A/B Alarm Cable Form	
CX		1836/317	A/B Alarm Contact Bank C.P.	

MAIN BASE UNIT (TYPE 2) S.3803 MODIFIED FOR

NO. 54 TELEPRINTER (CONTINUED)

<i>Old Addendum No. 4</i>	<i>New Diagram Fig. 1</i>	<i>Part No.</i>	<i>Part Name</i>	
PLUGS AND CORDS				
DY		CD.1281	9-way Plug and Cord C.P., <i>comprises:</i>	} NOT WANTED
		BO.2678	9-pin Plug	
		CD.1265A/3	9-conductor Cord	
		BO.2679	9-point Socket	
		CD.1282	12-way Plug and Cord C.P., <i>comprises:</i>	
		BO.2693	12-pin Plug	
		CD.1275A/3	12-conductor Cord	
		BO.2594	12-point Socket	
DZ		CD.1270	3-way Plug and Cord C.P., <i>comprises:</i>	
EA		BO.2677	3-pin Plug	
		CD.1271A/3	3-conductor Cord	
		BO.2670	3-point Socket	
EB		1836/238	Cable Clip C.P.	
CARRIAGE END-OF-LINE CONTACTS AND TRANSFORMER				
NBH		1831/389 PS.2079-1	Carriage End-of-Line Switch Contacts C.P. Std. 6BA Screw (2 per set) for securing Item NBH to Main Base Casting.	
NBJ		PP.8883	Switch Plunger	
NBK		PB.4272	Switch Plunger Bush (pressed into Main Base)	
NBL		BO.3244	Transformer (220, 230 or 240 volt, 50 c/s input, 0.5A, 6-volt output).	
NBM		PS.1356-1	Std. 2BA Screw (2 per set)	} For securing Item NBL to Main Base Casting.
NBN		PW.1005-1	Std. 2BA Washer	
NBO		PN.1505-1	Std. 2BA Locknut	
NBP		CF.1558	Cable Form (for End-of-Line Indicator Lamp).	
NBQ		CF.1557	Earthing Lead (for connecting one side of the Transformer 6-volt output to Frame).	
BOWDEN CABLE (for extra lift of Ink Ribbon Jumper for two-colour printing, and prevention of release of the Home A/B Unit when the W.R.U. Key is depressed).				
NBR		1836/348 PB.4287 PS.2093-1 PW.1013-1 PW.2037	Bearing Bracket C.P., <i>includes:-</i> Oil-Impregnated Bush ((2 per set). Std. 6BA Screw } 3 of each per set for Std. 6BA Washer } securing Item NBR to Std. 6BA Spring Washer } Main Base Casting.	
NBS		PP.6793	Cable Operating Plunger.	
NBT		BO.3229	Anderton Clip (2 per set) for retaining Item NBS.	
NBU		1836/350	Inner Cable	
NBV		1836/347	Outer Cable C.P., <i>comprises:-</i>	
NBW		1836/349 PB.4273	Outer Cable Cable Bush	
		PS.2045-1	Std. 6BA Screw	
NBX		PE.1184	Insulating Sleeve (P.V.C), slides over Item NBV.	
NBY		1836/266	Rear Bearing Block C.P., <i>comprises:-</i>	
		1836/307	Bearing Block Mounting Plate C.P.	
		1836/261A	Rear Bearing Block	
		PS.2047-1	Std. 6BA Screw (2 per set) for securing Bearing Block to Mounting Plate C.P.	
NBZ		PF.1092	Oil Plug (fits in Oiler Tube in Bearing Block)	
NCA		PP.6808	Plunger.	
		PS.2045-1	Std. 6BA Screw (3 per set).	
		PW.1013-1	Std. 6BA Washer	} 2 of each per set.
		PW.2037	Std. 6BA Spring Washer	

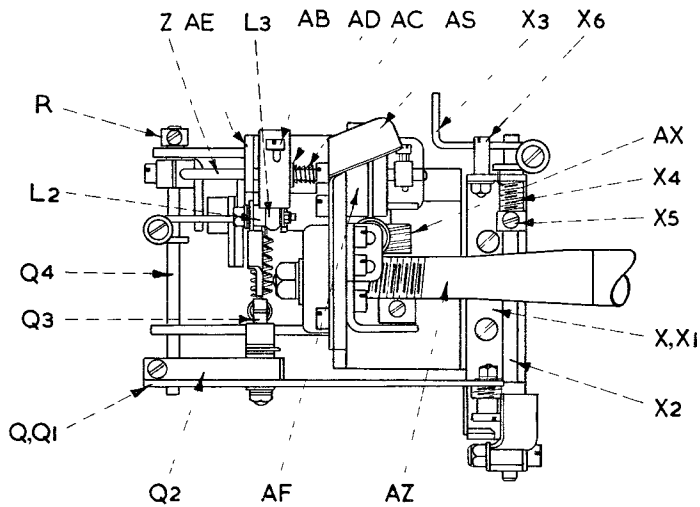
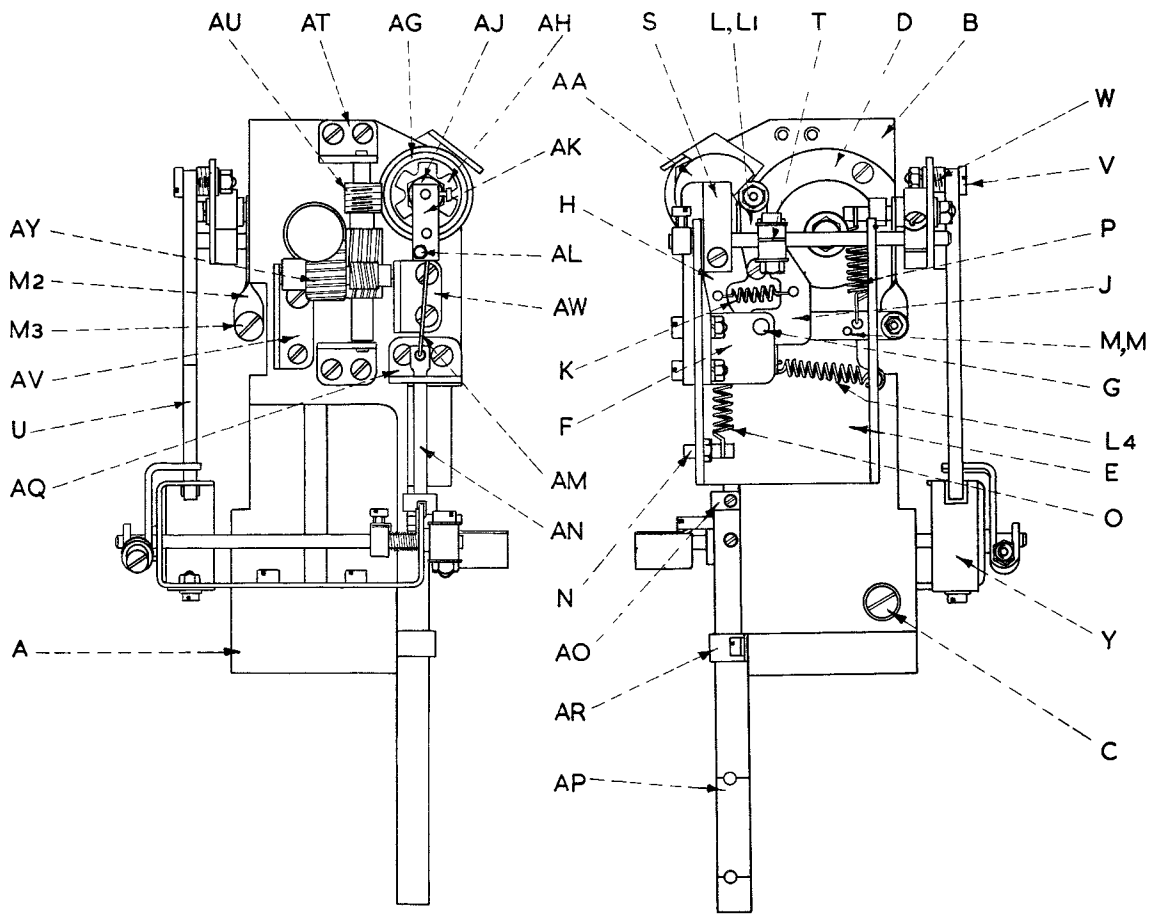


FIG. 2
STARTER SWITCH CONTROL UNIT

STARTER SWITCH CONTROL UNIT S.3808

(See Fig. 2)

<i>Index Letter</i>	<i>Part No.</i>	<i>Part Name</i>
<i>Bearing Bracket Casting</i>		
A	3808/32A	Bearing Bracket Casting.
<i>Bearing Plate and Trip Shaft Bracket</i>		
B	3808/30A	Bearing Plate
C	PS.1302-1 8364	Std. 2BA Screw (2 per set) for securing item A to item B). Ballrace (for Mainshaft, Type SKF.EE3) not visible, inside item D.
D	1825/2A PS.2029-1 3808/49	Mainshaft Bearing Cup. Std. 6BA Screw (3 per set) for securing item D. Tripshaft Bracket C.P. comprises:-
E	3808/31A	Tripshaft Bracket
F	3808/34 PS.2077-1 PW.2037 PN.1513-1	Bearing Bracket Std. 6BA Screw Std. 6BA Spring Washer Std. 6BA Lock Nut
G	PP.7885	Latch Spindle
H	3808/19	Latch (L.H.)
J	3808/22	Latch C.P. (R.H.)
K	PG.7389	Latch Return Spring
L	3808/46	Roller Arm C.P. comprises:-
L1	3808/17	Roller Arm
L2	PS.7081 PW.1013-1 PW.2037 PN.1013-1	Pivot Screw Std. 6BA Washer Std. 6BA Spring Washer Std. 6BA Nut
L3	RL.1157A PW.1017-1 PW.2050 PN.1017-1 PS.5385 PN.1013-1	Roller Std. 8BA Washer Std. 8BA Spring Washer Std. 8BA Nut Special Screw Std. 6BA Nut
L4	PG.7387	Tension Spring (for item L)
M	3808/48	Spring Setting Arm C.P. comprises:-
M1	3808/12	Spring Setting Arm
M2	3808/4	Spring Stop
M3	PS.5634 PW.2050 PN.1017-1 PW.1035-1	Shouldered Screw Std. 8BA Spring Washer Std. 8BA Nut Std. 5BA Washer (3 per set) between item L and item M1.
N	PP.6143	Spring Anchor
O	PG.7386	Tension Spring (for item M)
P	PG.7385A	Tension Spring (for item M, does not form part of Trip Shaft Bracket C.P.)
Q	3808/47	Latch Lever C.P. comprises:-
Q1	3808/11	Latch Lever
Q2	3808/2A	Latch Adjusting Block
Q3	PP.6142 PW.1013-1 PW.2037 PN.1013-1	Special Anchor Pin Std. 6BA Washer Std. 6BA Spring Washer Std. 6BA Nut
Q4	PP.6796 PS.2093-1	Trip Shaft Std. 6BA Screw (for clamping item Q4)
R	CS.1106	Std. Collar and Screw (for retaining item Q4)
S	3808/16 PS.2093-1	Throwout Arm Std. 6BA Screw (for clamping item S, does not form part of Trip Shaft Bracket C.P.)
T	3808/14 PS.2141-1 PW.1013-1 PN.1013-1	Latch Lever Std. 6BA Screw Std. 6BA Washer (2 per set) Std. 6BA Nut
U	3808/20	Latch Lever Link
V	PS.5635 PW.2050 PN.1017-1	Pivot Screw Std. 8BA Spring Washer Std. 8BA Nut
W	PG.3147 PB.4280	Torsion Spring (between items U and Q). Collar (under item W).

STARTER SWITCH CONTROL UNIT S.3808 (CONTINUED)

<i>Index Letter</i>	<i>Part No.</i>	<i>Part Name</i>
<i>Keyboard Trip Link Assembly</i>		
X	3808/50	Trip Lever C.P. <i>comprises:-</i>
X1	3808/23	Bearing Bracket
X2	PP.6794	Trip Lever Spindle
X3	3808/21	Trip Lever (2 per set) one at each end of item X2.
	PW.1013-1	Std. 6BA Washer (4 per set)
	PN.1013-1	Std. 6BA Nut
	PS.2141-1	Std. 6BA Screw
	PW.1035-1	Std. 5BA Washer
		} 2 of each } For securing item X3. per set
X4	PG.3149	Torsion Spring (for item X). For retaining item X4 on item X2.
X5	CS.1106	Set Collar and Screw
X6	PP.5575	Threaded Stop Pin
	PW.2050	Std. 8BA Spring Washer
	PN.1017-1	Std. 8BA Nut
		} for securing item X6
Y	3808/10A	Lever Stop
	PS.2445-1	Std. 8BA Screw
	PW.2050	Std. 8BA Spring Washer
	PN.1017-1	Std. 8BA Nut
	PS.2061-1	Std. 6BA Screw (2 per set) for securing item X to item A.
<i>Cam and Spindle</i>		
Z	PP.6797	Cam Spindle
AA	3808/8A	Cam
AB	PS.2042-1	Std. 6BA Screw (for securing item AA)
AC	PG.5102	Compression Spring
AD	PW.5046	Special Washer (one each end of item AC)
AE	3808/25	Cam Spindle Bearing Bracket
	PS.2042-1	Std. 6BA Screw (2 per set) for securing item AE.
<i>Ratchet and Weight Assembly</i>		
AF	3808/27	Ratchet Boss
	PS.2045-1	Std. 6BA Screw (2 per set) for securing item AF to item B.
AG	3808/26	Ratchet
AH	1825/14	Friction Washer
AJ	PN.5031	Special Nut (for securing item AG and item AH)
AK	3808/15	Weight Lifting Arm C.P.
	PS.2443-1	Std. 8BA Screw (for retaining item AK)
AL	PS.5505	Special Shouldered Screw
	PN.1021-1	Std. 10BA Nut
		} Anchor for item AM
AM	3808/39	Starter Weight Link
AN	3808/40	Weight Rod C.P.
AO	CS.1022	Set Collar and Screw
AP	3808/35	Weight C.P.
	PS.2077-1	Std. 6BA Screw (for securing item AP to item AN)
AQ	3808/3	Rod Guide Bracket
	PS.2042-1	Std. 6BA Screw (2 per set) for securing item AQ to item B.
AR	1825/17A	Starter Weight Guide
	PS.2462-1	Std. 8BA Screw
	PW.2050	Std. 8BA Spring Washer
		} (2 per set) for securing item AR to casting.
AS	3808/13A	Throwout Cam
	PS.2042-1	Std. 6BA Screw (2 per set) for securing item AS to item B.
<i>Gears and Brackets</i>		
AT	3808/7	Bearing Bracket (2 per set)
	PS.2042-1	Std. 6BA Screw (4 per set) for securing item AT.
AU	3808/29	Intermediate Shaft
AV	3808/5	Bearing Bracket L.H.
AW	3808/6	Bearing Bracket R.H.
	PS.2042-1	Std. 6BA Screw
AX	3808/9	Main Shaft Worm Spindle
AY	GR.2188	Worm Wheel
	PS.2430-1	Std. 8BA Screw (for securing item AY)
	PB.4282	Bearing Bush (bearing for mainshaft)

STARTER SWITCH CONTROL UNIT S.3808 (CONTINUED)

<i>Index Letter</i>	<i>Part No.</i>	<i>Part Name</i>
<i>Gears and Brackets (Continued)</i>		
AZ	3808/36	Main Driving Shaft C.P. (Grp.1) comprises:-
	3808/33	Main Driving Shaft
	SKF/EE3	Skefko Ball Race
	1825/3	Main Shaft Bearing
	1825/2A	Main Shaft Bearing Cup
	PS.2042-1	Std. 6BA Screw (3 per set) for securing Bearing Cup to Main Shaft Bearing.
	P.B.1032	Spacing Collar
	GR.4039	Main Typehead Gear
	1825/5	Main Shaft Coupling
	PW.5224	Thrust Washer
	PN.5088	Special Nut

A/B ROCKSHAFT ASSEMBLY

*Required only when A/B Unit is fitted
(See Fig. 3)*

<i>Index Letter</i>	<i>Part No.</i>	<i>Part Name</i>
A	1841/92	A/B Rockshaft Assembly comprises:-
A1	1841/84	Rockshaft Lever C.P.
	PS.2168-1	Std. 6BA Screw
	PW.1013-1	Std. 6BA Washer (2 per set)
	PW.2037	Std. 6BA Spring Washer
	PN.1013-1	Std. 6BA Nut
A2	1841/85	Rockshaft-Lever C.P.
A3	PS.7087	Special Screw
	PW.1013-1	Std. 6BA Washer
	PW.2037	Std. 6BA Spring Washer
A4	PG.7395	Tension Spring
B	1841/87	A/B Rockshaft C.P.
C	1824/57	Rockshaft Bearing Bracket
D	PS.1676-1	Std. 4BA Screw (For securing item C)
E	1841/86	W.R.U. Lever C.P.
F	PG.7379	Tension Spring (For item E)
G	1926/28	Back Plate C.P.
	PS.2157-1	Std. 6BA Screw
	PW.1013-1	Std. 6BA Washer
	PN.1513-1	Std. 6BA Nut
H	1838/162	A/B Trip Lever C.P.
J	1838/160	Trip Lever Extension
	PS.2077-1	Std. 6BA Screw
	PW.1013-1	Std. 6BA Washer
	PW.2037	Std. 6BA Spring Washer
	PS.2168-1	Std. 6BA Screw
	PW.1013-1	Std. 6BA Washer
	PW.2037	Std. 6BA Spring Washer
	PN.1013-1	Std. 6BA Nut

} For securing Item A1 to item B.

} For securing item A1 and item A2.

} For securing item G to Combination Head

} For securing item H to item J.

} For clamping item H to item B.

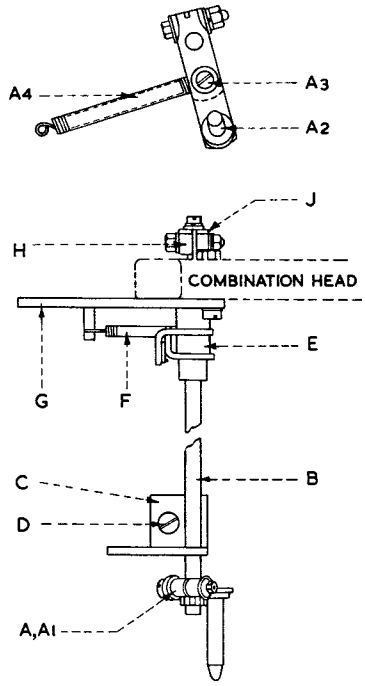


FIG. 3
A/B ROCKSHAFT ASSEMBLY

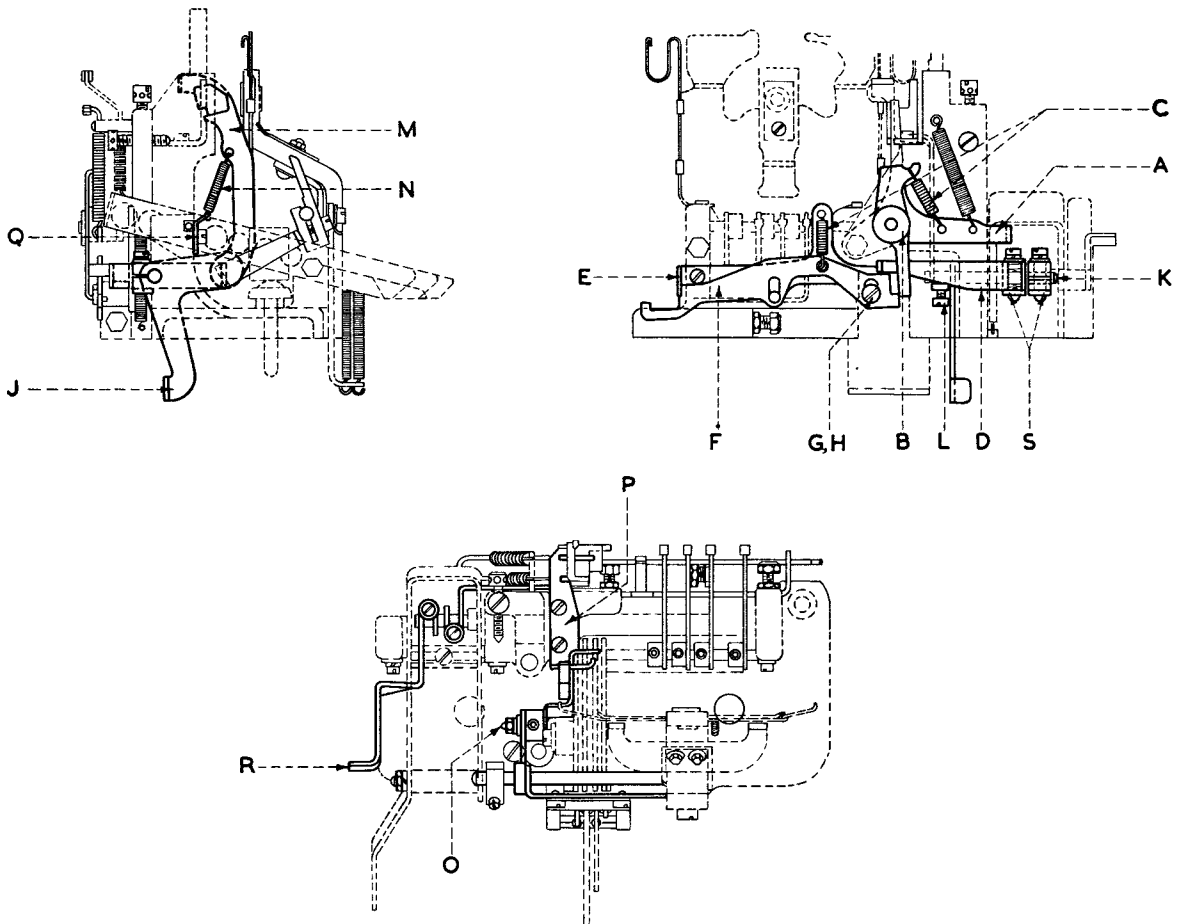


FIG. 4

CONTROL LEVER UNIT S.3769A

The Control Lever Unit used on the No. 54 Teleprinter is similar to that appearing on page 31 of Part List No. 1078 for the No. 7 Teleprinter, but with the alterations listed below.

The Index Letters are those shown in Figs. 14 and 15 of Part List No. 1078.

Index Letters	Part No.	Part Name
A	1838/108C	Control Lever Base C.P. <i>Is replaced by:-</i>
	3840/2	Control Lever Base C.P.
AE	1838/30	Jumper Shaft C.P. <i>Is replaced by:-</i>
	3740/13A	Jumper Shaft C.P.
AK	1838/40C	Typehead Support Bracket C.P. <i>Is replaced by:-</i>
	2945/1	Typehead Support Bracket C.P.
AL	PS.1332-1	Std. 2BA Screw <i>Is replaced by:-</i>
	PS.1354-1	Std. 2BA Screw

PARTS ADDED TO CONTROL LEVER UNIT S.3769A FOR TWO-COLOUR PRINTING AND NON-RELEASE OF HOME A/B UNIT

(See Fig. 4)

Index Letters	Part No.	Part Name
---------------	----------	-----------

For Non-Release of Home A/B Unit only.

A	1838/165	Figure Shift Lever C.P. <i>(Replaces 1838/12, Figure Shift Lever C.P. item Z, page 31 of Part List No. 1078)</i>
B	1838/170	Figure Shift Lever Extension C.P.
C	PG.7139	Tension Spring <i>(For items A and F) (2 per set)</i>
D	1838/169	Latch Trip Lever.
E	1838/168	Plate C.P.
	PS.2077-1	Std. 6BA Screw
	PW.1013-1	Std. 6BA Washer
	PW.2037	Std. 6BA Spring Washer
		} 2 of each per set for securing item E.
F	1838/159	Latch
G	PB.4037	Collar
H	PS.7088	Special Screw
		} For retaining Item F.

Parts common to both Non-Release of Home A/B Unit and Two-colour printing facility.

J	3740/2	Drop Lever C.P.
K	PP.6126	Parallel Pin
L	PS.2045-1	Std. 6BA Screw <i>(For securing Drop Lever on Pin)</i>
M	3740/5A	Delay Lever C.P.
N	PG.7396	Tension Spring <i>(for Item M)</i>
O	PS.5616A	Special Screw
	PW.1013-1	Std. 6BA Washer
	PW.2037	Std. 6BA Spring Washer
	PN.1013-1	Std. 6BA Nut
		} For securing Item M.
P	3740/6A	Shift end Delay Lever Rack <i>(Replaces 1838/13 Shift Lever Rack, item AB on page 31 of Part List No. 1078)</i>
Q	3740/8	Spring Anchor <i>(Replaces 1838/26 Retaining Plate Item K on page 31 of Part List No. 1078)</i>
R	3740/12	Trip Lever
S	3740/10	Keep Plate <i>(2 per set)</i>
	PS.2125-1	Std. 6BA Screw
	PW.1013-1	Std. 6BA Washer
	PW.2037	Std. 6BA Spring Washer
		} 2 of each per set for securing items R and D.

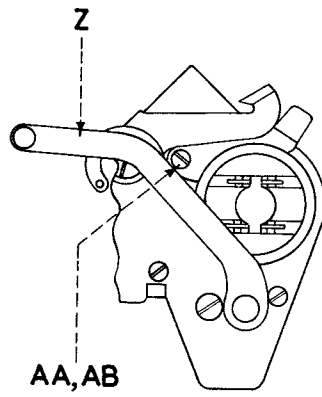
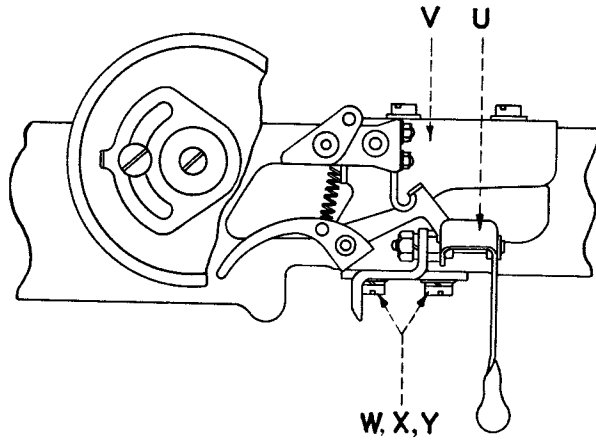


FIG. 5

PAGE ATTACHMENT UNIT (TYPE 2)

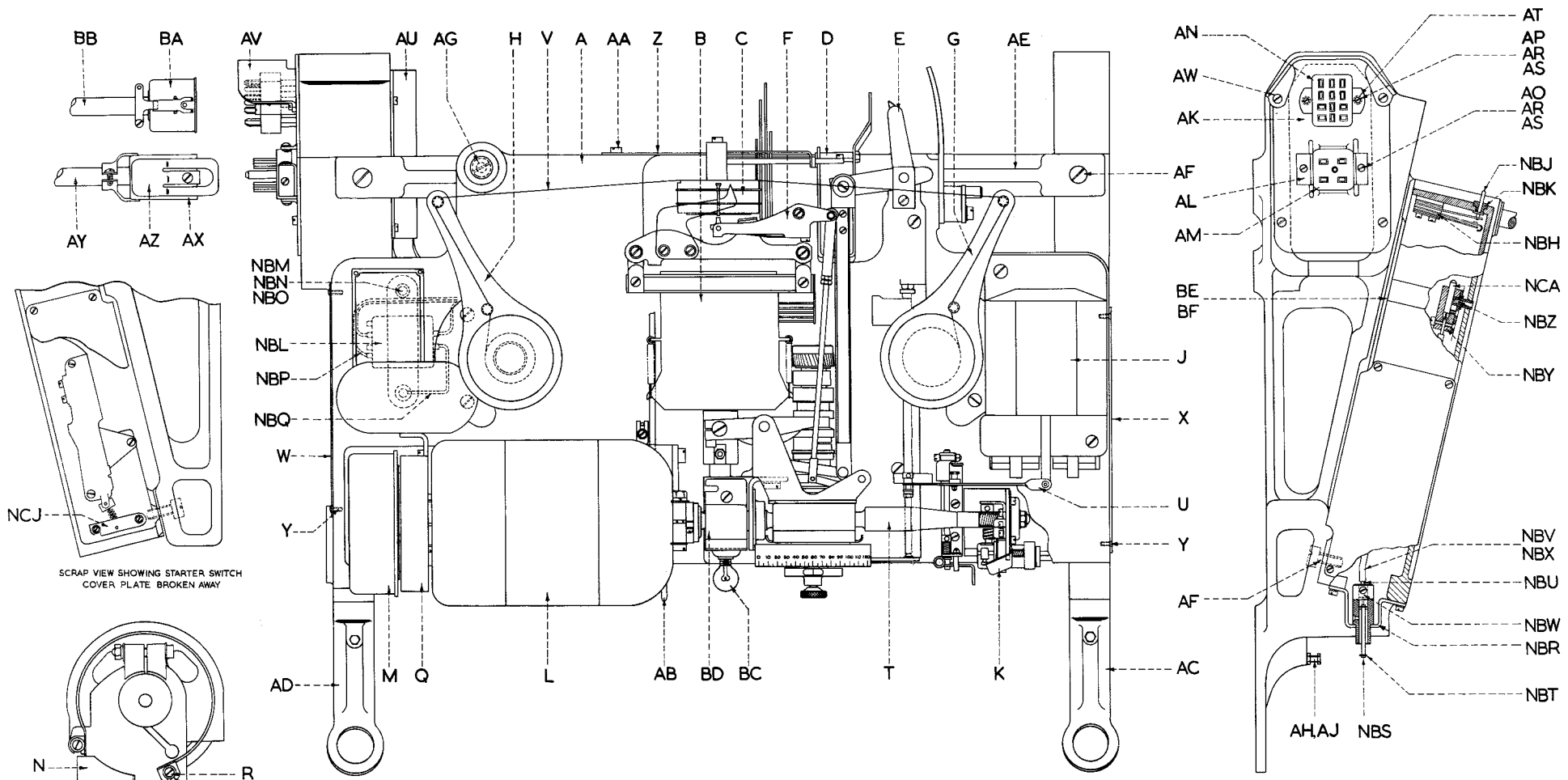
Friction Feed — S.3702. Group No. 3

The independent dash-pot pattern Page Attachment Unit (Type 2) fitted to No. 54 Teleprinter is identical to that appearing on pages 48–57 in Part List No. 1078, (9th edition — with corrections) but with a modified Pressure release lever and Platen shaft. Also, the Carriage Bell Unit is replaced by a Carriage Switch Assembly. The items in Part List No. 1078 which are changed are as follows:-

Index Letter	Part No.	Part Name
E (page 49) Is replaced by:-	1831/343 1831/343A	Main Frame C.P. Main Frame C.P. <i>(This is identical to the present Main Frame but with two extra holes for securing the Switch Operating Lever C.P., 1831/394).</i>
Z (page 49) Is replaced by:-	1831/342 1831/398	Carriage Spindle C.P. Carriage Spindle C.P. <i>(This is identical to 1831/342 but with the portion at the L.H. end for the Handle crank, cut off)</i>
AL) AO) (page 49) AP) X (page 56) Is replaced by:- Z	1831/355 PW.4145 PN.1505-1 1839/36B 1839/106	Handle Crank C.P. Std. 2BA Spring Washer } Std. 2BA Locknut } <i>NOT WANTED</i> Pressure Release Lever C.P. Pressure Release Lever C.P. <i>(See Fig. 5 of this list) (This is similar to 1839/36B but with a differently shaped release lever).</i>

The Carriage Bell Unit is replaced by a Carriage Switch Assembly shown on Fig. 5 of this list.

DN (page 51) Is replaced by:- U	S. 1843 Gr. 1 1831/394 1831/388 EC. 1562 PW. 2026 PN. 1009-1 1831/387 PF. 1101 BO. 3243	Carriage Bell Unit Carriage Switch Operating Lever C.P. <i>comprises:-</i> Switch Operating Lever Bracket Switch Lever Eccentric Pin Std. 4BA Spring Washer } Std. 4BA Nut } <i>2 of each per set</i> Switch Operating Lever Felt Oiling Washer <i>(2 per set)</i> Anderton Clip
W X Y V	PS. 1694-1 PW. 1009-1 PW. 2025 1831/395 1831/392 1831/391 1831/385 PS. 2457-1 PW. 2050 PN. 1517-1 PF. 1101 23956A 1831/393 PG. 7029 BO. 3229 PS. 1676-1 PW. 1009-1	Std. 4BA Screw } Std. 4BA Washer } <i>2 of each per set for</i> Std. 4BA Spring Washer } <i>securing item U.</i> End-of-Line Contacts Trip Arm C.P. <i>comprises:-</i> Latch Arm Bracket C.P. Latch Bracket C.P. Trigger Lever Latch Std. 8BA Screw Std. 8BA Spring Washer Std. 8BA Locknut Felt Oiling Washer <i>(4 per set)</i> Std. Locking Ring <i>(For securing Latch Bracket C.P.)</i> Resetting Lever C.P. Tension Spring <i>(For Resetting Lever C.P.)</i> Anderton Clip No. 95
AA AB	PS. 1676-1 PW. 1009-1 PS. 7084 PW. 2037	Std. 4BA Screw } <i>(2 of each per set). For securing</i> Std. 4BA Washer } <i>item V to Carriage Casting.</i> Special Screw } <i>For securing left-hand Lubricator</i> Special Washer } <i>and as stop for Pressure Release Lever.</i>



SCRAP VIEW SHOWING STARTER SWITCH COVER PLATE BROKEN AWAY

SCRAP VIEW OF MOTOR (SHOWING DETAIL OF GOVERNOR SHOCK PROTECTION)

NO. 54 TELEPRINTER SUB-ASSEMBLY

FIG. 1