

**Please do not upload this copyright pdf document to any other website. Breach of copyright may result in a criminal conviction.**

This Acrobat document was generated by me, Colin Hinson, from a document held by the Henlow Signals Museum, believed to be out of copyright. It is presented here (for free) and this pdf version of the document is my copyright in much the same way as a photograph would be. If you believe the document to be under other copyright, please contact me.

The document should have been downloaded from my website <https://blunham.com/Radar>, or any mirror site named on that site. If you downloaded it from elsewhere, please let me know (particularly if you were charged for it). You can contact me via my Genuki email page: <https://www.genuki.org.uk/big/eng/YKS/various?recipient=colin>

**You may not copy the file for onward transmission of the data nor attempt to make monetary gain by the use of these files. If you want someone else to have a copy of the file, point them at the website. (<https://blunham.com/Radar>). Please do not point them at the file itself as it may move or the site may be updated.**

It should be noted that most of the pages are identifiable as having been processed by me.

---

I put a lot of time into producing these files which is why you are met with this page when you open the file.

In order to generate this file, I need to scan the pages, split the double pages and remove any edge marks such as punch holes, clean up the pages, set the relevant pages to be all the same size and alignment. I then run Omnipage (OCR) to generate the searchable text and then generate the pdf file.

Hopefully after all that, I end up with a presentable file. If you find missing pages, pages in the wrong order, anything else wrong with the file or simply want to make a comment, please drop me a line (see above).

It is my hope that you find the file of use to you personally – I know that I would have liked to have found some of these files years ago – they would have saved me a lot of time !

Colin Hinson

In the village of Blunham, Bedfordshire.

Nos. 7/N, 7/CTK & 54/N Teleprinters  
equipped with  
REPERFORATING ATTACHMENT

*Creed & Company Limited*

TELEGRAPH HOUSE  
CROYDON, ENGLAND

*Telegraphic Address:*  
CREDO, TELEX, CROYDON

*Telex:* 28836

*Telephone:*  
MUNICIPAL 2424



MODEL 7, N TELEPRINTER WITH REPERFORATING ATTACHMENT

(See Fig. 1 of Perforating Attachment - Part List No. 1947, 2nd ed.)

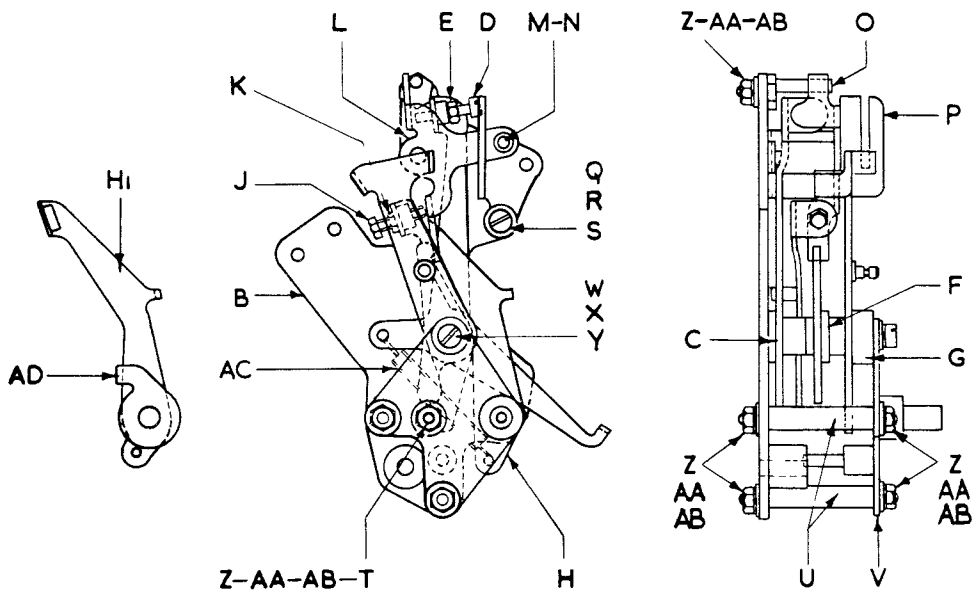
Index Letter	Part No.	Part Name
		Model 7 Teleprinter Sub Assembly. See page 4 of this list for extra items for Reperforating Attachment.
A	S.3702 S.3704 S.1847A S.1914	Standard Friction Feed Page Attachment Unit or Page Attachment fitted with Sprocket Feed Carriage or Tape Attachment Unit (without End-of-Line Indicator) or Tape Attachment Unit (with End-of-Line Indicator)
		See Part List No. 1078.
B	PS.4583-1 PW.4031 1841/11	Type N3 or N4 Keyboard Unit, with Reperforating Attachment. See page 6 of this list. Std. 5/16" B.S.F. Screw } Std. 5/16" Spring Washer } 2 of each per machine for securing Keyboard Unit.
C	S.3743 2869/48 PS.1769-1 PW.2025 PW.1009-1 2869/46 2869/57 2869/58 PS.2137-1 PW.2037 PW.1013-1 2869/63 PS.1676-1 PW.2026 S.3796	Tape Roll Holder Unit. See page 14 of Part List No. 1947. Packing Piece (between Tape Guard Bracket (R.H.) 2869/55 and Main Base Casting). Std. 4BA Screw } Std. 4BA Spring Washer } 2 of each per set for securing item C to Main Base Unit. Std. 4BA Washer } Packing Piece 1/64" thick } Secured between Tape Guard Bracket (L.H.) 2869/51 and Main Base casting. or Packing Piece 1/32" thick } or Packing Piece 3/64" thick } Std. 6BA Screw } Std. 6BA Spring Washer } For securing Tape Guard Bracket (L.H.) 2869/51, to Main Base Casting. Std. 6BA Washer } Cover Guide C.P. } Std. 4BA Screw } 2 of each per set for securing Cover Guide C.P. 2869/63 to Main Base Unit. Std. 4BA Spring Washer } Dust Cover Unit includes:-
D	1837/36	Rubber Foot } 4 of each per set.
E	PB.1216	Pillar } 4 of each per set.
F	PW.5162 PS.1843-1 PW.5560 PB.4198 PW.5561	Special Washer (4 per set). Std. 4BA Screw } Special Washer } 4 of each per set for securing Rubber Feet and pillars. Collar } Special Washer }
G	1837/3B PG.3015 PB.1095	Message Desk and Paper Clip C.P. includes:- Paper Clip Spring Collar
H	1837/4	Paper Clip C.P.
J	1837/1 1837/2	Slide Rod Desk Clip (2 per set)
K	PS.2063-1	Std. 6BA Screw } 2 of each per set for securing Desk Clip.
L	PN.1013-1	Std. 6BA Nut }
M	PN.1513-1 PS.1300-1 PW.1005-1 PS.1691-1 PW.1009-1 PW.2026 PN.1009-1	Std. 6BA Locknut } Std. 2BA Screw } 2 of each per set for securing Item G. Std. 2BA Washer } Std. 4BA Screw } Std. 4BA Washer (2 per set) } For earthing Dust Cover. Std. 4BA Spring Washer } Not visible. Std. 4BA Locknut }
N	2860/8 2860/10	Lamp Glass (E.O.L.I. Lamp glass) Lamp Glass Retaining Bracket
O	PS.2082-4	Std. 6BA Screw } 2 of each per set for retaining Lamp Glass Assembly.
P	PW.1013-1	Std. 6BA Washer }
Q	PN.1013-1	Std. 6BA Nut }
R	2869/75	Roller Support C.P.
S	PS.2061-1	Std. 6BA Screw } 2 of each per set for securing item R.
T	PW.1013-1	Std. 6BA Washer }
U	PN.1513-1	Std. 6BA Locknut }
V	RL.1147	Roller
W	PW.1009-1	Std. 4BA Washer } For retaining item V.
X	PW.2026	Std. 4BA Spring Washer }
Y	PN.1009-1 2865/6 PS.5604	Std. 4BA Nut } Pillar C.P. (For front feet of Main Base) } 2 of each per set. Not visible. Shouldered Screw (for securing Pillar C.P.) }

MODEL 7 CTK TELEPRINTER WITH REPERFORATING ATTACHMENT

Part No.	Part Name
	Model 7 Teleprinter Sub Assembly. See page 4 of this list for extra items for Reperforating Attachment.
S.3072	Standard Friction Feed Page Attachment Unit
S.3704	or Page Attachment fitted with Sprocket Feed Carriage
S.1847A	or Tape Attachment with or without Line Indicator
S1914	or Tape Attachment with Friction-Line Indicator
	Type CTK or T Keyboard Unit with Reperforating Attachment. See page 7 of this list.
PS.4583-1	Std. 5 16" B.S.F. Screw
PW.4031	Std. 5 16" Spring Washer
1841 11	Coupling Disc
S.3743	Tape Roll Holder Unit. See page 14 of Part List No. 1947.
2869 48	Packing Piece between Tape Guard Bracket (R.H.) 2869/55 and Main Base Casting.
PS.1769-1	Std. 4BA Screw
PW.2025	Std. 4BA Spring Washer
PW.1009-1	Std. 4BA Washer
2869 46	Packing Piece 1/4" thick
2869 57	or Packing Piece 1/32" thick
2869 58	or Packing Piece 3/64" thick
PS.2137-1	Std. 6BA Screw
PW.2037	Std. 6BA Spring Washer
PW.1013-1	Std. 6BA Washer
PW.5205	Special Washer between Retaining Plate, 2869/50, and Main Base Casting.
2869 63	Cover Guide C.P.
PS.1676-1	Std. 4BA Screw
PW.2026	Std. 4BA Spring Washer
S.3796	Dust Cover Unit includes:-
1837/36	Rubber Foot
PB.1216	Pillar
PW.5162	Special Washer (4 per set)
PS.1843-1	Std. 4BA Screw
PW.5560	Special Washer
PB.4198	Collar
PW.5561	Special Washer
1837 3B	Message Desk and Paper Clip C.P. includes:-
PG.3015	Paper Clip Spring
PB.1095	Collar
1837 4	Paper Clip C.P.
1837/1	Slide Rod
1837 2	Desk Clip
PS.2063-1	Std. 6BA Screw
PN.1013-1	Std. 6BA Nut
PN.1513-1	Std. 6BA Locknut
PS.1300-1	Std. 2BA Screw
PW.1005-1	Std. 2BA Washer
PS.1691-1	Std. 4BA Screw
PW.1009-1	Std. 4BA Washer (2 per set)
PW.2026	Std. 4BA Spring Washer
PN.1009-1	Std. 4BA Locknut
2860/8	Lamp Glass (E.C.L.I. cover glass).
2860 10	Lamp Glass Retaining Bracket
PS.2082-4	Std. 6BA Screw
PW.1013-1	Std. 6BA Washer
PN.1013-1	Std. 6BA Nut
2869 75	Roller Support C.P.
PS.2061-1	Std. 6BA Screw
PW.1013-1	Std. 6BA Washer
PN.1513-1	Std. 6BA Locknut
RL.1147	Roller
PW.1009-1	Std. 4BA Washer
PW.2026	Std. 4BA Spring Washer
PN.1009-1	Std. 4BA Nut
2865 6	Pillar C.P. For Front Feet of Main Base
PS.5604	Shouldered Screw For securing Pillar C.P.

NO. 54 TELEPRINTER WITH REPERFORATING ATTACHMENT

Part No.	Part Name
	No. 54 Teleprinter Sub Assembly. See page 5 of this list for extra items for Reperforating Attachment.
S.3702	Page Attachment Unit (Type 2) Friction Feed (but with modified Pressure Release Lever and Platen Shaft. Carriage Bell Unit S.1843 replaced by a Carriage End-of-Line Indicator Switch). See Provisional Part List No.1054.
S.3805A	Silencing Cover and Sub Base. Type "N" Keyboard Unit with Reperforating Attachment. See page 8 of this list.
1841/11	Coupling Disc (S.R.B.F.)
PS.4583-1	Std. 5/16" B.S.F. Screw } For securing Keyboard, 2 per machine.
PW.4031	Spring Washer }



SUPPRESSION UNIT 1926/48A  
FIG. 2

## No. 7 Teleprinter

### MODEL 7/N AND 7/CTK TELEPRINTER SUB-ASSEMBLY EXTRA ITEMS FOR REPERFORATING ATTACHMENT

(See Diagram, Fig. 1A, of this list)

The Teleprinter Sub-Assembly is the same as shown on page 14 of Part List No. 1078, 9th edition (reprint with corrections) but with the following additional or modified items. See Addendum No. 4 for Main Base Unit, Type 2.

If a Type 3 (Overlap) Cam Unit is fitted, then Part List No. 3750 also applies with new items F1 to F7 below.

Index Letter	Part No.	Part Name
E	S.1926	Combination Head Unit. See page 18 of this list for new or modified items.
F	S.3750	Type 3 (Overlap) Cam Unit. See Part List No. 3750 and items F1 to F7 below.
F1		Is replaced by: 3750 '59 Traversing Link (item FB1 Part List No. 3750)
F2		PP.5568 Threaded Pin
F3		PW.1013-1 Std. 6BA Washer
F4		Additional parts PW.2037 Std. 6BA Spring Washer
F5		PN.1013-1 Std. 6BA Nut
F6		RL.1152 Roller
F7		PS.1793-1 Std. 4BA Screw (item HG Part List No. 3750)
		Is replaced by: PP.8879 Threaded Pin
	<i>Alternatively:</i>	
	S.2866B	Type 2 (Orientation) Cam Unit. See page 32 of Part List No. 1078 and items FA, FB below.
FA		Is replaced by: 1830 '124A Traversing Link Sub C.P. (item H1 Part List No. 1078)
FB		2866 '32 Traversing Link Sub C.P.
		2866 '43 Trip Bracket C.P.
		Additional parts PS.2093-1 Std. 6BA Screw
		PW.2037 Std. 6BA Spring Washer
		RL.1152 Roller
		2 of each per set. For securing item FB to Comb Setting Finger Block (Item BM, page 35, Part List No. 1078).
In addition to the above modifications, the following items, together with items M to BX on pages 9 & 10, are added to the No. 7/N Teleprinter Sub-Assembly.		
	2866 '42	Trip Rod and Link C.P. comprises:-
F8	2866 '34	Push Rod C.P.
F9	2866 '36	Pivot Block
F10	2866 '37	Push Rod Link C.P.
F11	2866 '40	Traverse Lever C.P.
F12	CS.1017	Set Collar and Screw (2 per set) for retaining item F9.
F13	PW.1013-1	Std. 6BA Washer
F14	PS.2079-1	Std. 6BA Screw } For retaining item F11.
F15	CS.1064	Set Collar and Screw (For retaining item F10).
F16	1926 '42	Anchor Ring (2 per set) } For item F8
F17	PG.7041	Tension Spring
G	1926 '48A	Suppression Unit See page 11 of this list.
H	PS.2154-1	Std. 6BA Screw
K	PW.2037	Std. 6BA Spring Washer } 2 per set. For securing item G.
L	PN.1513-1	Std. 6BA Locknut
CA	3785 '39	Handle
CB	3785 '40	Clamp Plate
CC	PS.1407-1	Std. 2BA Screw
CD	PW.1005-1	Std. 2BA Washer
CE	PW.2013	Std. 2BA Spring Washer } 2 of each per set for securing Handle.
CF	PN.1005-1	Std. 2BA Nut

**NO. 54 TELEPRINTER SUB-ASSEMBLY EXTRA ITEMS FOR  
REPERFORATING ATTACHMENT**

(See Diagram, Fig. 1, of this list).

The Teleprinter Sub-Assembly is the same as shown on page 2 of Provisional Part List No. 1054 but with the following modified and additional items.

The Type 3 (Overlap) Cam Unit is a standard fitment on the No. 54 Teleprinter and Part List No. 3750 applies to this with new items F1 to L below.

Index Letter of Fig. 1	Part No.	Part Name
E	S.1926 Gr.5	Combination Head Unit. See page 18 of this list for new or modified items.
F	S.3750	Type 3 (Overlap) Cam Unit. See Part List No. 3750 but replace items HG and FB by items F1 to F17 below.
F1	3750/59A	Traversing Link
F2	PP.5568	Threaded Pin
F3	PW.1013-1	Std. 6BA Washer
F4	PW.2037	Std. 6BA Spring Washer
F5	PN.1013-1	Std. 6BA Nut
F6	RL.1152	Roller
F7	PP.8879	Threaded Pin
F8	2866/42	Trip Push Rod and Link C.P., comprises:-
F9	2866/34	Push Rod C.P.
F10	2866/36	Pivot Block
F11	2866/37	Push Rod Link C.P.
F12	2866/40	Traverse Lever C.P.
F13	CS.1017	Set Collar and Screw (2 per set - for retaining Item F9).
F14	PW.1013-1	Std. 6BA Washer
F15	PS.2079-1	6BA x 1/4" Hex.Hd. Screw > For retaining item F11
F16	CS.1064	Set Collar and Screw (for retaining Item F10).
F17	1926/42	Anchor Ring (2 per set) For Item F8.
G	PG.7041	Tension Spring
H	1926/48A	Suppression Unit See page 11 of this list.
I	PS.2154-1	Std. 6BA x 19/32" Screw
J	PW.2037	Std. 6BA Spring Washer > 2 per set. For securing Item G.
K	PN.1513-1	Std. 6BA Locknut

In addition to the above modification, the items M to BX on pages 9 & 10 of this list are added to the No. 54 Teleprinter Sub-Assembly.

NO. 7/N TELEPRINTER TYPES N3 AND N4 KEYBOARD UNITS EXTRA  
PARTS FOR REPERFORATING ATTACHMENT

(See Diagram Fig. 1A of this list)

Index Letter	Part No.	Part Name
A		Type N3 or N4 Keyboard Unit. <i>This is the same as shown in Part List No. 1047K, 3rd. ed., but with the following modified items:</i>
	S.3765 Gr.8	Answer-Back Unit. <i>See Part List CTK/1078, 3rd. ed., but modified as under:</i>
		2902/1 Gr.1 Driving Shaft C.P. (item E).
	<i>Is replaced by:</i>	2902/1 Gr.3 Driving Shaft C.P.
		3765/10 Keyboard Lock Cam Lever C.P. (Item DR).
	<i>Is replaced by:</i>	3765/60 Keyboard Lock Cam Lever C.P.
		PP.5520 Threaded Pin (R.H. position only) item DA.
	<i>Is replaced by:</i>	PP.6132 Threaded Pin
		3785/43A Trip Lever and Link C.P.
	<i>Additional parts</i>	PG.7072 Tension Spring (Return Spring for Trip Lever and Link C.P.)
		<i>Alternatively, when A/B Unit is not fitted</i>
	S.1976 Gr.10	Link Unit. <i>This is similar to S.1976 Gr.3, on page 12 of Part List No. 1947, 2nd. ed., but modified as under:</i>
		1947/249 Trip Lever and Link C.P. (following item C).
	<i>Is replaced by:</i>	3785/43 Trip Lever and Link C.P.
		PP.5520 Threaded Pin. (R.H. position only) item H.
	<i>Is replaced by:</i>	PP.6132 Threaded Pin.
	<i>Additional part</i>	PG.7020 Tension Spring (Return Spring for Trip Lever and Link C.P.)
		<i>The following items B to DH are added to the Keyboard Unit:</i>
B	1947/10B Gr.3	Punch Block Unit (Centre Feed)
	1947/10B Gr.4	Punch Block Unit (Advance Feed) } (See page 11 of this list
C	S.3785A	Anvil Bracket Unit <i>See page 16 of this list.</i>
	PS.1354-1	Std. 2BA Screw
	PW.5053	Special Washer
	PW.2013	Std. 2BA Spring Washer
D	1947/300	Shim (.020" thick) 4 per set maximum
	1947/277	Shim (.005" thick) 3 per set maximum
	1947/278A	Stop Plate
	PS.1694-1	Std. 4BA Screw (2 per set)
DA	3785/54	Cuttings Box C.P. includes:-
	1947/289	Pivot Boss
	PS.1717-1	Std. 4BA Screw
	PW.2026	Std. 4BA Spring Washer
	PW.1009-1	Std. 4BA Washer
	BO.2914	Latch
	PS.2063-1	Std. 6BA Screw (2 per set) for securing Latch.
DB	1947/295	Cuttings Box Bracket C.P. comprises:-
	1947/290	Cuttings Box Bracket
	1947/292	Pivot Pin
	PW.1005-1	Std. 2BA Washer
	PW.2013	Std. 2BA Spring Washer
	PN.1505-1	Std. 2BA Locknut (2 per set)
DC	2060/176	Perforator Guard
	PS.1696-1	Std. 4BA Screw (3 per set) for securing items DB and DC to item C.
	BO.2915	Spring Clip (Retains item DA to keyboard)
	PS.2061-1	Std. 6BA Screw
	PW.2037	Std. 6BA Spring Washer
	PW.1013-1	Std. 6BA Washer
DD	2869/83	Tape Tube C.P.
DE	2869/80	Tape Tube Support L.H.
DF	2869/81	Tape Tube Support R.H.
	PS.1757-1	Std. 4BA Screw
	PW.2025	Std. 4BA Spring Washer
	PW.1009-1	Std. 4BA Washer
	PS.1671-1	Std. 4BA Screw
	PW.2025	Std. 4BA Spring Washer
	PW.1009-1	Std. 4BA Washer
DG	1947/252B	Keyboard Cover C.P.
DH	PS.6850	Special Screw (2 per set) for securing item DG.



NO. 7 TELEPRINTER TYPES C.T.K. AND T KEYBOARD UNIT EXTRA  
PARTS FOR REPERFORATING ATTACHMENT

(See Diagram Fig. 1A of this list)

Index Letter	Part No.	Part Name
A		Type CTK or T Keyboard Unit. <i>This is the same as shown in Part List No. CTK/1078, 3rd edition but with the following modifications:-</i>
	S.3765 Gr.3	Answer-Back Unit. <i>The standard Answer-Back Unit S.3765, Gr.3 is modified to suit the Reperforating Attachment, as shown below:</i>
		2902/1 Gr.1 Driving Shaft C.P.
	<i>Is replaced by:</i>	2902/1 Gr.3 Driving Shaft C.P.
		3765 10 Keyboard Lock Cam Lever
	<i>Is replaced by:</i>	3765 60 Keyboard Lock Cam Lever
		1947 249 Trip Lever and Link C.P.
	<i>Is replaced by:</i>	3785/43A Trip Lever and Link C.P.
		1947 270 4th Transfer Bar C.P.
	<i>Is replaced by:</i>	1947 133 4th Transfer Bar C.P.
		PP.5520 Threaded Pin
	<i>Is replaced by:</i>	PP.6132 Threaded Pin
	<i>Additional part:</i>	PG.7072 Tension Spring
		<i>Alternatively if Answer-Back Unit is not fitted</i>
	S.1976 Gr.7	Link Unit <i>(When machine is fitted with End-of-Line Indicator).</i>
	S.1976 Gr.8	or Link Unit <i>(When machine is not fitted with End-of-Line Indicator).</i>
		<i>The following items B to DH are added to the Keyboard Unit:</i>
B	1947/10B Gr.1	Punch Block Unit <i>(Centre Feed)</i>
	1947/10B Gr.2	or Punch Block Unit <i>(Advanced Feed)</i>
		<i>See page 11 of this list.</i>
C	S.3785A	Anvil Bracket Unit. <i>See page 16 of this list.</i>
	PS.1354-1	Std. 2BA Screw
	PW.5053	Special Washer
	PW.2013	Std. 2BA Spring Washer
		<i>2 of each per set for securing item C to Keyboard Casting. Not visible.</i>
D	1947/300	Shim 7.025" dia. 3 per set maximum.
	1947/277	Shim 4.035" dia. 3 per set maximum.
	1947/278A	Stop Plate
	PS.1694-1	Std. 4BA Screw <i>(2 per set)</i>
DA	3785/54	Cuttings Box C.P. includes:-
	1947/289	Pivot Boss
	PS.1717-1	Std. 4BA Screw
	PW.2026	Std. 4BA Spring Washer
	PW.1009-1	Std. 4BA Washer
	BO.2914	Latch
	PS.2063-1	Std. 6BA Screw <i>(2 per set) for securing Latch.</i>
DB	1947/295	Cuttings Box Bracket C.P. comprises:-
	1947/290	Cuttings Box Bracket
	1947/292	Pivot Pin
	PW.1005-1	Std. 2BA Washer
	PW.2013	Std. 2BA Spring Washer
	PN.1505-1	Std. 2BA Locknut
		<i>For securing Pivot Pin.</i>
DC	2060/176	Perforator Guard
	PS.1696-1	Std. 4BA Screw <i>(3 per set) for securing items DB and DC to item C.</i>
	BO.2915	Spring Clip <i>(Retains item DA to Keyboard).</i>
	PS.2061-1	Std. 6BA Screw
	PW.2037	Std. 6BA Spring Washer
	PW.1013-1	Std. 6BA Washer
	2869/99	Tape Tube C.P.
	2869/80	Tape Tube Support L.H.
	2869/97	Tape Tube Support R.H.
	PS.2077-1	Std. 6BA Screw
	PW.1013-1	Std. 6BA Washer
	PW.2037	Std. 6BA Spring Washer
	PS.1671-1	Std. 4BA Screw
	PW.1009-1	Std. 4BA Washer
	PW.2025	Std. 4BA Spring Washer
		<i>2 of each per set for securing Tape Tube Support R.H. to Transfer Unit Back Plate. Not visible.</i>
		<i>2 of each per set for securing Tape Tube to Support L.H. and R.H.</i>

**NO. 54 TELEPRINTER TYPES N3 AND N4 KEYBOARD UNITS EXTRA  
PARTS FOR REPERFORATING ATTACHMENT**

(See Diagram Fig.1 of this list)

<i>Index Letter</i>	<i>Part No.</i>	<i>Part Name</i>
A	S.3809	Type N3 or N4 Keyboard Unit. <i>This is the same as shown in Part List No.1047K, 3rd ed., but with the following modified items:-</i> Answer Back Unit. <i>This is modified as under:-</i> 2902/1 Gr.1 Driving Shaft C.P. <i>Is replaced by:</i> 2902/1 Gr.3 Driving Shaft C.P. 3765/10 Keyboard Lock Cam Lever C.P. <i>Is replaced by:</i> 3765/60 Keyboard Lock Cam Lever C.P. PP.5520 Threaded Pin (R.H. position only) <i>Is replaced by:</i> PP.6132 Threaded Pin Additional parts } 3785/43A Trip Lever and Link C.P. PG.7072 Tension Spring (Return Spring for Trip Lever and Link C.P.).
	S1976	<i>Alternatively, when A/B Unit is not fitted:</i> Link Unit. <i>This Unit is modified as under:</i> 1947, 249 Trip Lever and Link C.P. <i>Is replaced by:</i> 3785/43 Trip Lever and Link C.P. PP.5520 Threaded Pin (R.H. position only). <i>Is replaced by:</i> PP.6132 Threaded Pin Additional Part: PG.7072 Tension Spring
		<i>The following items B to D6 are added to the Keyboard Unit:</i>
B	1947/10B Gr.3 or 1947/10B Gr.4	Punch Block Unit (Centre feed) } Punch Block Unit (Advanced feed) } <i>See page 11.</i>
C	S.3785A PS.1354-1 PW.2013 PW.5053	Anvil Bracket Unit } <i>See page 16.</i> Std. 2BA x 5/8" Screw } Std. 2BA Spring Washer } <i>2 of each per set for securing item C</i> Special Washer } <i>to Keyboard casting</i> } <i>Not visible.</i>
D	1947/300 1947/277 1947/278A PS.1694-1	Shims .020" thick (4 max.) } Shims .005" thick (3 max.) } <i>For vertical adjustment of Item C.</i> Stop Plate } Std. 4BA Screw (2 per set) }
D1	1947/314	Perforator Gear Cover
D2	PS.2061-1	Std. 6BA x 1/4" Screw
D3	PW.2037	Std. 6BA Spring Washer
D4	1947/315	Gear Cover
D5	PS.2061-1	Std. 6BA x 1/4" Screw
D6	PW.2037	Std. 6BA Spring Washer } <i>2 of each per set for securing Item D4.</i>

**ROCKSHAFT AND A.B. SUPPRESSION PARTS**

(See Fig. 1, Sheet 1)

Index Letter	Part No.	Part Name	
M	1824/57	Rockshaft Bearing Bracket	
N	PS.1676-1	4BA x 1/4" Screw (For locating "M")	
O	1841/76	Answer-Back Suppression Trip Rod (For No. 54 Teleprinter) See Fig. 1.	
or O	1841/65A	Answer-Back Suppression Trip Rod (For No. 7 Teleprinter) See Fig. 1A.	
P	PW.5624	Felt Washer	} For locating item O.
Q	CS.1030	Set Collar and Screw	
R	1926/6	A.B. Suppression Lever (For adjustment of item O).	
S	PS.2077-1	Screw (for securing R).	
U	1841/64	Rockshaft C.P. (For No. 7 Teleprinter) See Fig. 1A.	
V	PW.5624	Felt Washer	
W	1841/6	Rockshaft Collar	} For locating A/B Rockshaft C.P.
X	PS.2045-1	6BA x 3/16" Screw	
	1841/92	Answer-Back Rockshaft Assembly, comprises:-	
Y	1841/84	Answer-Back Rockshaft Lever C.P.	} For No. 54 only. See Fig.
Z	1841/85	Answer-Back Trip Shaft Lever C.P.	
AA	PS.7087	Special Screw (For securing items Y and Z)	
AB	PW.1013-1	6BA Standard Washer (3 per set, one for item AA, two for item AD)	
AC	PW.2037	6BA S.C. Spring Washer (2 per set, one for item AA, one for item AD)	
AD	PS.2168-1	6BA x 5/8" Hex. Screw	
AE	PN.1013-1	6BA Std. Nut	
AF	PG.7395	Tension Spring	
or Y	1926/8	Adjuster (2 per set) for adjusting Item U.	
Z	PS.2141-1	Standard 6BA x 9/16" Screw	
AA	PW.2037	Std. 6BA Spring Washer	
AB	PN.1013-1	Std. 6BA Nut	
AC	PW.1013-1	Std. 6BA Washer (4 per set). For item Y - one under each screw head and one under each nut.	
AD	EC.1557	Eccentric (Fine adjustment for item U).	
AE	PW.2037	Std. 6BA Spring Washer	} For securing item AD.
AF	PN.1013-1	Std. 6BA Nut	

**TRIP CABLE AND ASSOCIATED PARTS**

(See Fig. 1, Sheet 1, and Fig. 1A.)

Index Letter	Part No.	Part Name	
AG	3785/29	Plunger Casting	
AH	PS.2141-1	6BA x 9/16" Screw	} 3 or each for securing item AG.
AJ	PW.1013-1	6BA Washer	
AJ1	PW.2037	Std. 6BA Spring Washer	
AK	1926/64	Trip Case C.P. comprises:- (For No. 54 Teleprinter)	
AK1	1926/16	Trip Plunger Housing	
AK2	1926/56	Trip Inner Case	
AK3	1926/58	Trip Outer Case	
AK4	PN.5081	Trip Outer Case Coupling	
AK5	1926/24	Trip Adjuster	
or	1926/47	Trip Case C.P. (For No. 7 Teleprinter) comprises:- items AK1, AK4 and AK5 above together with:	
AK2	1926/45	Trip Inner Case	} See Fig. 14
AK3	1926/21	Trip Outer Case	
AL	1926/59	Trip Inner Cable (For No. 54 Teleprinter). See Fig. 1.	
or AL	1926/46	Trip Inner Cable (For No. 7 Teleprinter). See Fig. 1A.	
AM	PB.4253	Spacer (2 per set) for item AK1.	
AN	PS.2255-1	Std. 6BA x 1" Screw	} 2 of each per set for securing Item AK1.
AO	PW.1013-1	Std. 6BA Washer	
AP	PW.2037	Std. 6BA Spring Washer	
AQ	PN.1013-1	Std. 6BA Nut	
AR	PN.1505-1	Std. 2BA Locknut (2 per set) for securing Item AK5.	
AS	PP.6790	Plunger (2 per set) one for Item AK1, one for Item AK5.	

**SELECTOR CABLE AND ASSOCIATED PARTS**

See Figs. 1 and 1A)

<i>Index Letter</i>	<i>Part No.</i>	<i>Part Name</i>
AT	1926/65A	Selector Cable C.P. (For No. 54 Teleprinter) See Fig. 1. <i>includes:-</i>
AT1	1926/63	Selector Cable Fixing Block C.P.
AT2	1926/60	Selector Outer Case
AT3	1926/88	Selector Cable Adjuster C.P. <i>includes:-</i>
AT4	PS.6521	Clamp Screw (5 per set) for Item AT3.
or	1926/26A	Selector Cable C.P. (For No. 7 Teleprinter) See Fig. 1A. <i>includes:-</i>
AT1	1926/25	Selector Cable Fixing Block C.P.
AT2	1926/20	Selector Outer Cable
AT3	1926/88	Selector Cable Adjuster C.P. <i>includes:-</i>
AT4	PS.6521	Clamp Screw (5 per set)
AU	1926/61	Selector Inner Cable (5 per set) - not visible (For No. 54 Teleprinter).
or AU	1926/17	Selector Inner Cable (For No. 7 Teleprinter). See Fig. 1A.
AW	PS.2125-1	Std. 6BA x 1/2" Screw
AX	PW.2037	Std. 6BA Spring Washer
AY	PW.1013-1	Std. 6BA Washer
AZ	PS.2173-1	Std. 6BA x 11/16" Screw
BA	PW.2037	Std. 6BA Spring Washer
BB	PP.6790	Plunger (10 per set) 5 each end of cable.
BC	2319'143	Abutment (location for Item 4G)
BD	PS.2061-1	Std. 6BA x 1/4" Screw
BE	PW.2037	Std. 6BA Spring Washer
BF	PW.1013-1	Std. 6BA Washer

} 2 each per set for securing Item AT1.

} 2 each per set for securing Item AT3.

} for securing Item BC. } For No. 54 Teleprinter only.

**CABLE BRACKETS AND CLIPS**

See Figs. 1 and 1A)

<i>Index Letter</i>	<i>Part No.</i>	<i>Part Name</i>
BG	1926/62A	Cable Support Bracket
BH	PS.1696-1	Std. 4BA x 3/8" Screw (2 per set) for securing Item BG.
BJ	PK.1164	Cable Clip
BK	PK.1137	Cable Clip
or	PK.1138	Cable Clip (For Model 7 only). See Fig. 1A.
BL	PS.2045-1	Std. 6BA x 3/16" Screw
BL1	PW.2037	Std. 6BA S.C. Spring Washer
BM	3785/42A	Cable Support Bracket
BN	PS.1676-1	Std. 4BA x 1/4" Screw (2 per set) for securing Item BM.
BN1	PW.2025	Std. 4BA Spring Washer (2 per set)
BO	PK.1136	Cable Clip
BP	PK.1137	Cable Clip
BQ	PS.2093-1	Std. 6BA x 3/8" Screw
BR	PW.2037	Std. 6BA Spring Washer
BS	PN.1013-1	Std. 6BA Nut

} For No. 54 Teleprinter only.

} (2 per set) for securing Items BJ and BK.

} for securing Items BO and BP.

**CUTTINGS CHUTE AND FITTINGS**

(See Figs. 1 and 1A.)

BT	3785/51A	Cuttings Chute C.P. (For No. 54 Teleprinter). See Fig. 1.
or BT	3750/60	Cuttings Chute C.P. (For No. 7 Teleprinter). See Fig. 1A.
BU	PS.2042-1	Std. 6BA x 5/32" Screw (2 per set) for securing Item BT
BX	1947/309A	Cuttings Tube (For No. 54 Teleprinter only). See Fig. 1.

**SUPPRESSION UNIT 1926/48A**

(See Fig. 2)

<i>Index Letter</i>	<i>Part No.</i>	<i>Part Name</i>
B	1926/28	Back Plate C.P.
C	1926/43	Bell Suppression Lever C.P.
D	PS.2109-1	Std. 6BA x 7/16" Screw
E	PN.1513-1	Std. 6BA Locknut
F	1926/10	Intermediate W.R.U. Suppression Lever C.P. (For Group 3 only).
	or PB.4266	Spacer (For Group 2 only).
G	1926/36	Trip Lever C.P.
H	1926/34A	W.R.U. Lever C.P. (For Group 2 only).
H1	1841/86A	W.R.U. Lever C.P. (For Group 3 only).
J	PS.2105-1	6BA x 3/8" Hex.Hd. Screw
K	PN.1513-1	Std. 6BA Locknut
L	1926/30	Throw-out Lever C.P.
M	RL.1153	Roller
N	BO.3225	Anderton Clip (For retaining item M).
O	EC.1560	Eccentric (adjustment for item L).
P	1926/38	Guide Plate
Q	PS.2045-1	Std. 6BA x 3/16" Screw
R	PW.2037	Std. 6BA S.C. Spring Washer
S	PW.1013-1	Std. 6BA Washer
T	EC.1559	Eccentric (Adjustment for item G).
U	PP.5572	Anchor Pin (2 per set).
V	1926/32	Front Plate C.P. (For Group 2 only).
	or 1926/68	Front Plate C.P. (For Group 3 only).
W	PS.2093-1	Std. 6BA x 3/8" Screw
X	PW.2037	Std. 6BA S.C. Spring Washer
Y	PW.1013-1	Std. 6BA Washer
Z	PW.2037	Std. 6BA S.C. Spring Washer
AA	PW.1013-1	Std. 6BA Washer
AB	PN.1513-1	Std. 6BA Locknut
AC	PG.7391	Tension Spring (2 per set)
AD	1841/87A	A/B Rockshaft C.P. (For Group 3 only).

**PUNCH BLOCK UNIT 1947, 10B**

(Centre Feed) or (Advance Feed)

This is the same as shown on Page 6 of Part List No. 1947 (2nd. Edition).

**PUNCH BLOCK FULCRUM 1947/72A**

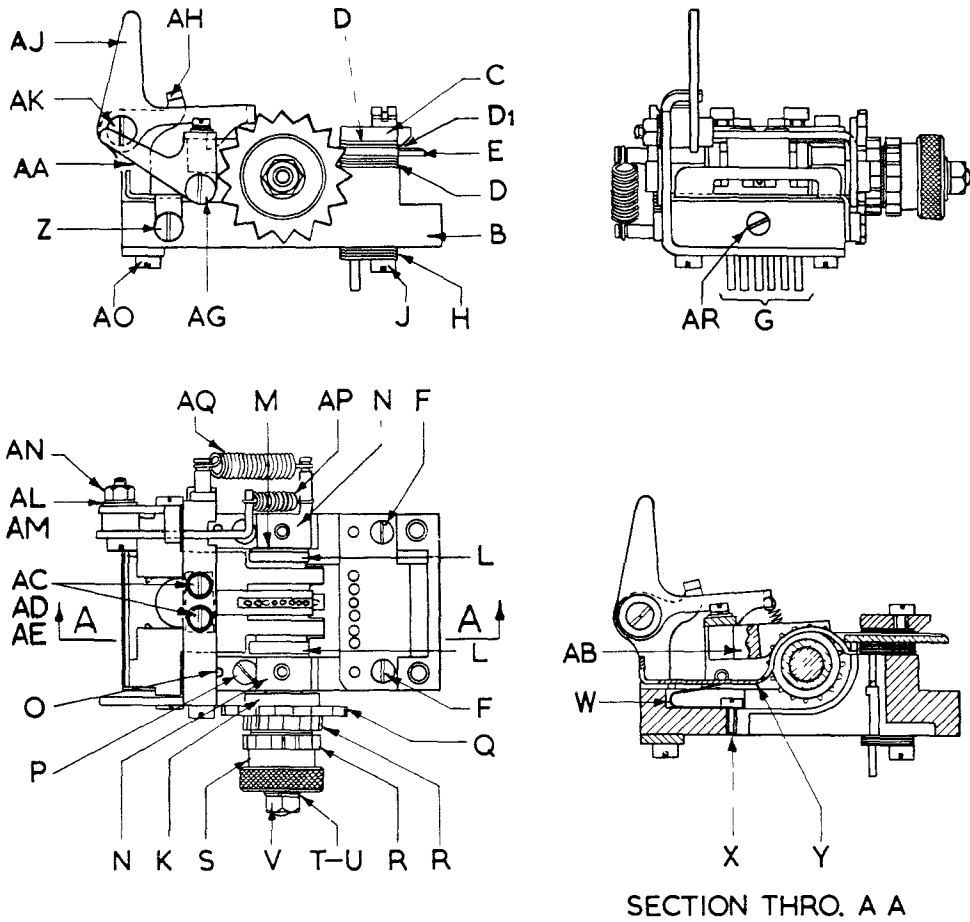
*(Centre Feed)*

*This is the same as shown in Part List No. 1947 (2nd. Edition), Page 8, Items AS to BR inclusive, but with the following alteration:-*

Item BB            1947/260    Tape Entry Guide C.P. *(For Model 7 Teleprinter)*  
                      or 1947/307A    Tape Entry Guide C.P. *(For Model 54 Teleprinter).*

*The Punch Block Head section on page 8 of Part List No. 1947 (2nd. Edition), Items BS to CZ inclusive and the whole of the Anvil Bracket section on pages 9 and 10, are not applicable, as printed, to the Reperforating Attachment.*

*Modified sections are given in the following pages.*



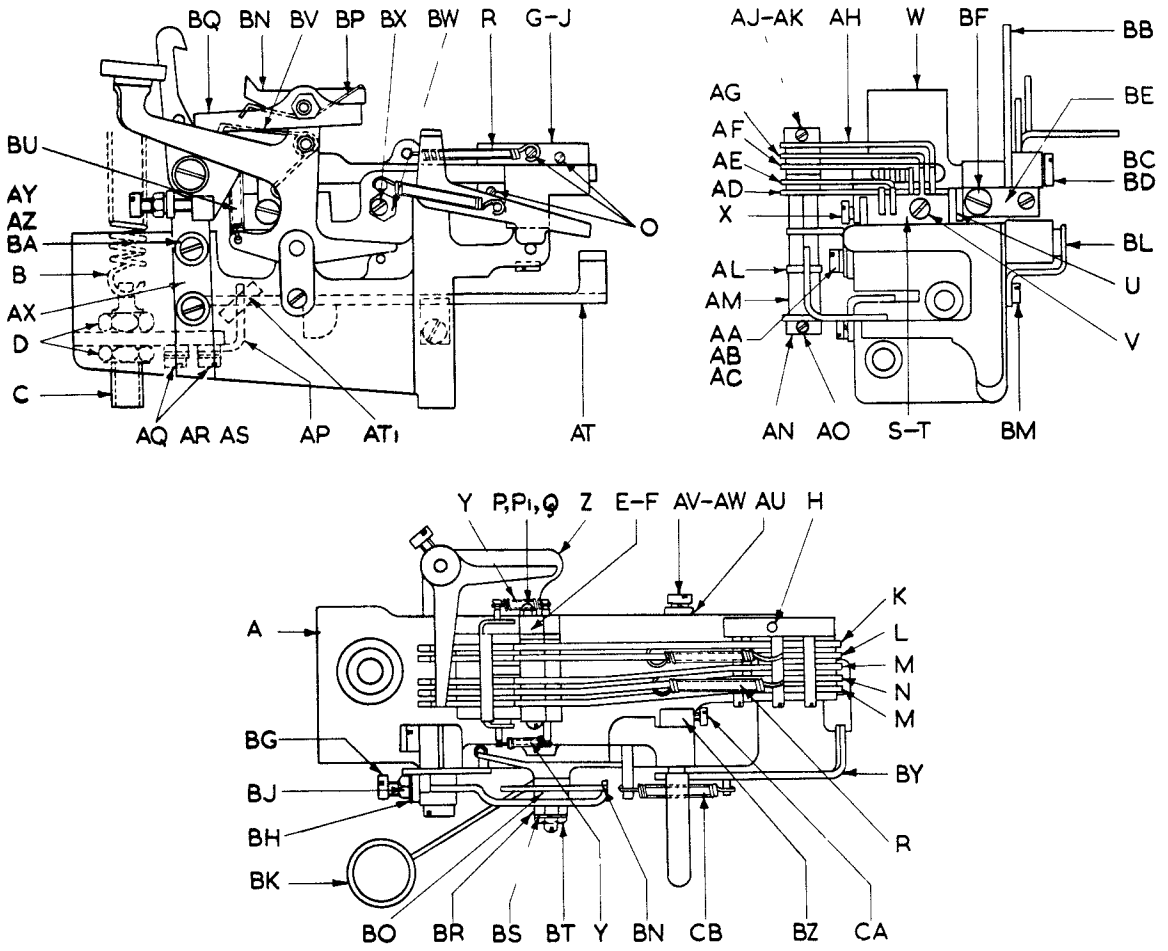
PUNCH BLOCK HEAD SUB. C.P.1947/91D  
 FIG. 3

## PUNCH BLOCK HEAD

See Fig. 3)

Index Letter	Part No.	Part Name	
	1947/91D Gr.1	Punch Block Head Sub C.P. (for Centre Feed)	comprise:
	or 1947/91D Gr.2	Punch Block Head Sub C.P. (for Advanced Feed)	
B	1947/92D	Punch Block Head Casting C.P.	} Centre Feed
C	1947/210C	Cover Plate	
D	1947/211B	Die Plate (5 per set)	
D1	1947/326	Special Die Plate	
E	1947/273B	Tape Guide Plate	
		<i>Alternatively:-</i>	
	1947/108C	Cover Plate	} Advanced Feed
	1947/109B	Die Plate (5 per set)	
	1947/329	Special Die Plate	
	1947/276B	Tape Guide Plate	
F	PS.2125-1	Std. 6BA x 1/2" Screw (2 per set) for securing Items C, D and E.	
G	1947/272	Set of Punches	
H	1947/275	Bottom Guide Plate (4 per set), Centre Feed.	
	or 1947/274	Bottom Guide Plate (4 per set), Advance Feed.	
J	PS.2061-1	Std. 6BA x 1/4" Screw (2 per set) for securing Item H.	
K	1947/263A	Feed Spindle C.P.	
L	RL.1051C	Roller (2 per set)	
M	PW.5256	Special Washer (3 per set as required) - shims for locating Item K.	
N	1947/239B	Bearing Block, R.H. and L.H. (2 per set), for Item K.	
O	PP.1065	Parallel Pin (2 per set) for Item N.	
P	PS.2125-1	Std. 6BA x 1/2" Screw (2 per set) for securing Item N.	
Q	1947/269	Retention Wheel	
R	1947/268	Feed Ratchet (2 per set)	
S	1947/267A	Feed Wheel Knob, includes:-	
	PP.6809	Threaded Pin	
T	PW.1009-1	Std. 4BA Washer	} for securing Items Q, R and S.
U	PW.2026	Std. 4BA Spring Washer	
V	PN.1509-1	Std. 4BA Locknut	
W	PG.2123	Stripper Lifting Spring	
X	PS.2445-1	Std. 8BA x 3/16" Screw (for securing Item W)	
Y	1947/319A	Stripper Spring	
Z	PS.5636A	Pivot Screw (2 per set) for securing Item Y.	
AA	1947/317A	Tape Guide Frame C.P.	
AB	1947/323A	Tape Guide	
AC	PS.2477-1	Std. 8BA x 5/16" Screw	} 2 per set for securing Item AB to Item AA.
AD	PW.2050	Std. 8BA S.C. Spring Washer	
AE	PW.1017-1	Std. 8BA Washer	
AG	PS.5640	Shouldered Screw (2 per set) for securing item AA.	
	PW.5649	Special Washer	
AH	1947/321A	Latch Support	
AJ	1947/318	Tape Guide Frame Latch C.P.	
AK	PS.5637	Eccentric Screw	
AL	PW.1013-1	Std. 6BA Washer	} for securing Item AJ to Item AH.
AM	PW.2037	Std. 6BA S.C. Spring Washer	
AN	PN.1013-1	Std. 6BA Nut	
AO	PS.2061-1	Std. 6BA x 1/4" Screw (2 per set) for securing Item AH.	
AP	PG.7078	Latch Spring (for Item AJ)	
AQ	PG.7388A	Tape Guide Frame Spring (for Item AA)	
AR	PP.6117	Spring Anchor Pin	





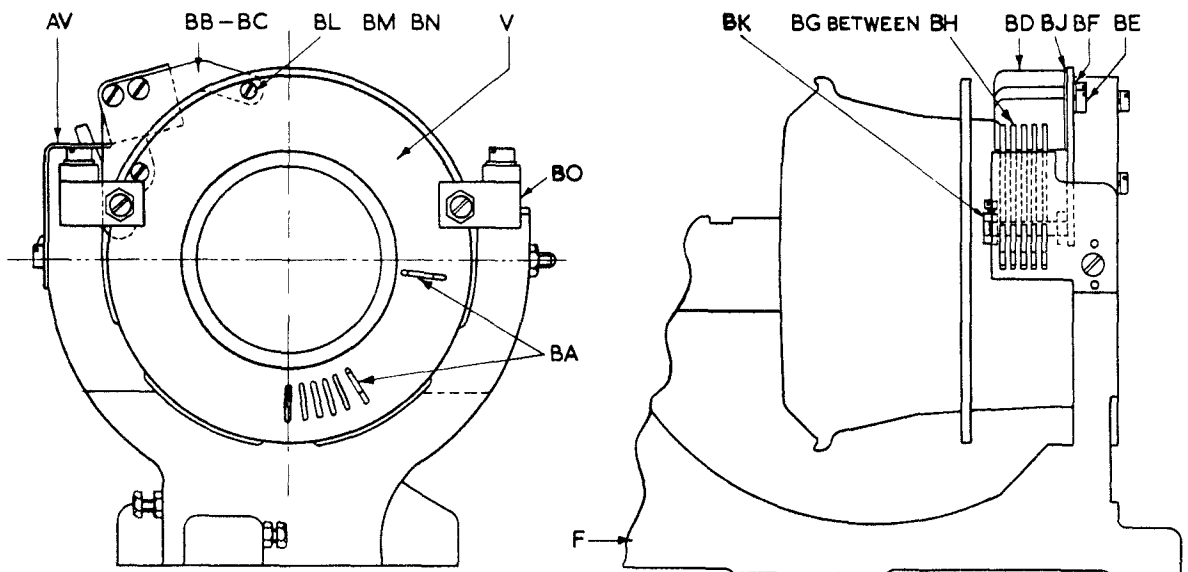
ANVIL BRACKET UNIT S.3785A  
FIG. 4

## ANVIL BRACKET UNIT S.3785A

(See Fig. 4)

Index Letter	Part No.	Part Name
<b>BRACKET AND SPRING</b>		
A	1947/132B	Anvil Bracket Casting C.P.
B	PG.7152	Tension Spring
C	1947/217	Spring Adjuster
D	PN.1501-1	Std. 0BA Locknut (2 per set) for locking Item C.
<b>SELECTOR BARS AND RACKS</b>		
E	3785/57	Anvil Rack C.P.
F	PS.2109-1	Std. 6BA Screw (2 per set) for securing Item E. (Not shown)
G	3785/31	Rack C.P.
H	PP.1098	Std. Parallel Pin (for positioning Item G).
J	PS.1708-1	Std. 4BA Screw (for securing Item G) (Not shown).
K	3785/2	Selector Bar (straight)
L	3785/3	Selector Bar (straight)
M	3785/5	Selector Bar (bent) (2 per set)
N	3785/6	Selector Bar (bent)
O	PP.5570	Threaded Pin (3 per set)
P	PP.5571	Threaded Pin
P1	PW.2037	6BA Single Coil Spring Washer
Q	PN.1513-1	Std. 6BA Locknut
R	PG.7378	Tension Spring (5 per set) for Items K, L, M and N.
<b>ANVIL</b>		
S	1947/141A	Anvil
T	PS.2125-1	Std. 6BA Screw (2 per set) for securing Item S. (Not shown).
<b>PUNCH WITHDRAWING BRACKET</b>		
U	EC.1558A	Eccentric
V	PS.2093-1	Std. 6BA Screw
W	1947/143A	Punch Withdrawing Bracket C.P.
X	PS.5544A	Shouldered Screw (2 per set) for securing Item W.
Y	PG.7186	Tension Spring (2 per set) for Item W.
<b>SELECTOR LEVERS AND TRIP LEVER</b>		
Z	3785/7	Selector and Trip Mounting Plate C.P.
AA	PS.1708-1	Std. 4BA x 7/16" Screw
AB	PW.1009-1	Std. 4BA Washer
AC	PW.2026	Std. 4BA S.C. Spring Washer
AD	3785/13	1st Selector Lever C.P.
AE	3785/15	2nd Selector Lever C.P.
AF	3785/17	3rd Selector Lever C.P.
AG	3785/19	4th Selector Lever C.P.
AH	3785/21	5th Selector Lever C.P.
AJ	PB.1035	Special Collar
AK	PS.2430-1	Std. 6BA Screw
AL	PF.1098	Felt Lubricator
AM	3785/26	Trip Lever C.P.
AN	PB.1035	Special Collar
AO	PS.2430	Std. 6BA x 1/8" Screw
<b>TRIP BAR AND GUIDES</b>		
AP	3785/28	Bearing Bracket
AQ	PS.2061-1	Std. 6BA x 1/4" Screw
AR	PW.1013-1	Std. 6BA Washer
AS	PW.2037	Std. 6BA S.C. Spring Washer
AT	3785/27	Trip Bar
AT1	PF.1102	Lubricator
AU	3785/35	Guide Plate
AV	PS.2061-1	Std. 6BA x 1/4" Screw
AW	PW.2037	Std. 6BA S.C. Spring Washer
<b>FEED PAWL AND ADJUSTMENT PLATE</b>		
AX	1947/305	Pivot Adjustment Plate C.P.
AY	PS.2061-1	Std. 6BA x 1/4" Screw
AZ	PW.2037	Std. 6BA S.C. Spring Washer
BA	PW.1013-1	Std. 6BA Washer
BB	1947/150	Feed Pawl C.P.
BC	PS.2061-1	Std. 6BA x 1/4" Screw
BD	PW.1013-1	Std. 6BA Washer

Index Letter	Part No.	Part Name
<b>FEED PAWL STOP</b>		
BE	1947/304	Pawl Adjustment Plate
BF	PS.1694-1	Std. 4BA x 3/8" Screw (for securing Item BE)
BG	PS.5301	Special Screw
BH	PW.1013-1	Std. 6BA Washer
BJ	PN.1013-1	Std. 6BA Nut
		} Adjustment for Item BB
<b>BACK SPACE MECHANISM</b>		
BK	1947/332A	Back Space Lever C.P. (For No.54 Teleprinters), comprises:-
	1947/331A	Back Space Lever Sub C.P.
	KB.1001	Key Button
or	1947/160B Gp.2	Back Space Lever C.P. (For No.7 Teleprinter), comprises:-
	1947/161B Gp.2	Back Space Lever Sub C.P.
	860/184	Key Button Cap
	860/185	Key Button Glass
	PL.1401	Key Label
BL	1947/298A	Pivot Pin C.P. (for Item BK)
BM	PS.2061-1	Std. 6BA x 1/4" Screw (for securing Item BL)
BN	1947/303	Back Space Pawl
BO	PW.5632	Spacing Collar
BP	PG.3145	Torsion Spring
BQ	1947/302	Feed Pawl Release Bar
BR	EC.1561	Eccentric
BS	PW.2037	Std. 6BA S.C. Spring Washer
BT	PN.1513-1	Std. 6BA Locknut
BU	PG.7322	Tension Spring
BV	PG.3058	Spring
BW	EC.5034	Eccentric (stop for Item BK)
BX	PS.2125-1	Std. 6BA x 1/2" Screw (for securing Item BW)
<b>REPERFORATOR THROW-OUT LEVER</b>		
BY	1947/147	Throwout Lever C.P.
BZ	PB.1035	Special Collar (to retain Item BY)
CA	PS.2430-1	Std. 8BA x 1/8" Screw (for securing Item BZ)
CB	PG.7029	Tension Spring



COMBINATION HEAD UNIT  
FIG. 5

**COMBINATION HEAD UNIT S.1926**

(See Fig. 5)

Group 5 for machines with Type 3 Overlap Cam Unit

Only those parts on the Combination Head Unit which are required when a machine is fitted with a Reperforating Attachment are listed.

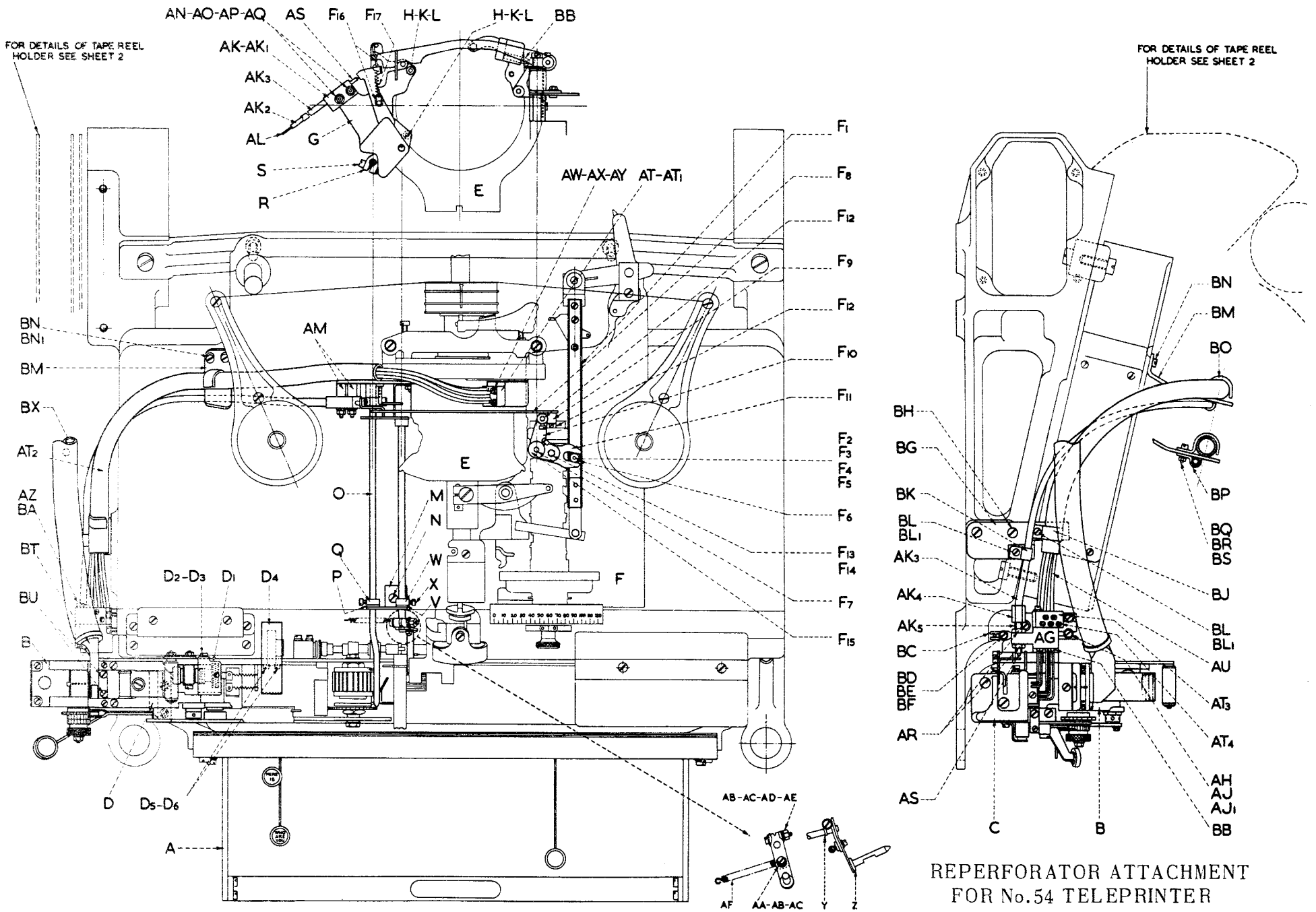
Refer to Part List No. 1078 (9th Edition with corrections) for parts which are unchanged.

<i>Index Letter</i>	<i>Part No.</i>	<i>Part Name</i>
F	1826/2A	Combination Head Frame C.P. (with Bush PB.1036, item 2, removed for No. 54 Teleprinter).
V	1826/17C	Front Plate C.P.
AV	1926/7	Comb Stop and Selector Lever Rack
BA	1826/136	W.R.U. Bellcrank C.P. (2 per set)
BB	1926/70	Selector Lever C.P. comprises:-
BC	1926/40	Selector Mounting Plate C.P.
BD	1926/22	Selector Plunger Block
BE	PS.2077-1	6BA x 5/16" Screw
BF	PW.2037	6BA Single Coil Spring Washer } 2 per set, for securing Item BD.
BG	PF.1098	Felt Washer (5 per set) for item BH.
BH	1926/12	Selector Levers (5 per set)
BJ	PW.5629	Shims (maximum 3 required)
BK	CS.1016	Set Collar and Screw
BL	PS.2154-1	6BA x 19/32" Screw } 2 per set for securing item BB.
BM	PW.2037	6BA Spring Washer }
BN	PN.1513-1	6BA Locknut }
BO	1841/57A	Typehammer Overthrow Stop Support L.H.

**TAPE REEL HOLDER**

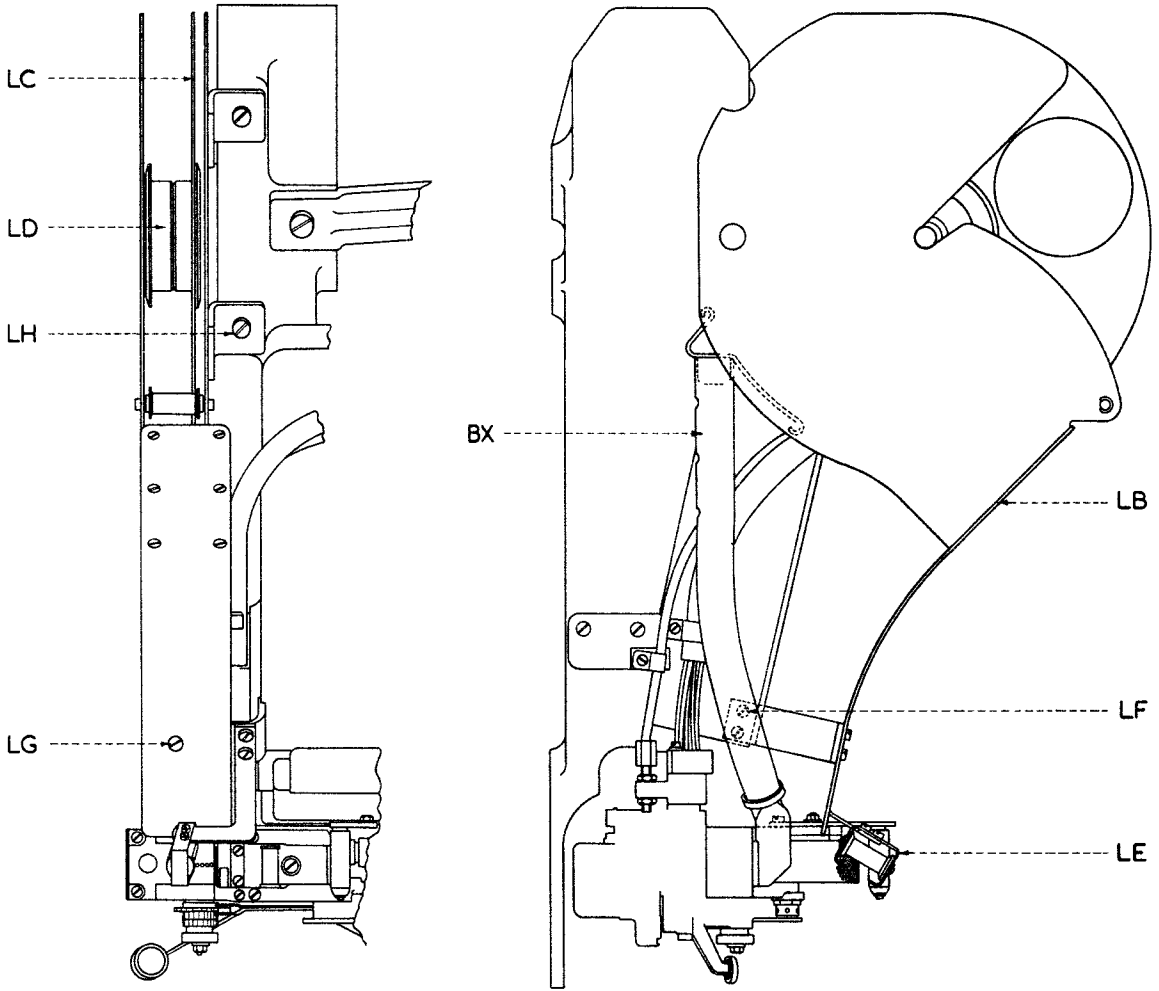
(See Fig. 1, Sheet 2)

LB	3807/28	Reel Holder C.P.	} For No. 54 Teleprinter only,
LC	3807/31	Reel Centre 2nd C.P.	
LD	3807/25	Tape Reel Centre	
LE	3807/30	Intermediate Roller and Bracket C.P.	
LF	PS.2093-1	6BA x 3/8" Screw (2 per set)	
LG	PS.2047-1	6BA x 3/16" Screw	
LH	PS.1310-1	2BA x 3/8" Screw (2 per set)	



REPERFORATOR ATTACHMENT  
FOR No. 54 TELEPRINTER

FIG. 1 (SHEET 1)



REPERFORATOR ATTACHMENT FOR MODEL 54 TAPE REEL HOLDER  
FIG. 1 (SHEET 2)

