

Please do not upload this copyright pdf document to any other website. Breach of copyright may result in a criminal conviction.

This Acrobat document was generated by me, Colin Hinson, from a document held by the Henlow Signals Museum, believed to be out of copyright. It is presented here (for free) and this pdf version of the document is my copyright in much the same way as a photograph would be. If you believe the document to be under other copyright, please contact me.

The document should have been downloaded from my website <https://blunham.com/Radar>, or any mirror site named on that site. If you downloaded it from elsewhere, please let me know (particularly if you were charged for it). You can contact me via my Genuki email page: <https://www.genuki.org.uk/big/eng/YKS/various?recipient=colin>

You may not copy the file for onward transmission of the data nor attempt to make monetary gain by the use of these files. If you want someone else to have a copy of the file, point them at the website. (<https://blunham.com/Radar>). Please do not point them at the file itself as it may move or the site may be updated.

It should be noted that most of the pages are identifiable as having been processed by me.

I put a lot of time into producing these files which is why you are met with this page when you open the file.

In order to generate this file, I need to scan the pages, split the double pages and remove any edge marks such as punch holes, clean up the pages, set the relevant pages to be all the same size and alignment. I then run Omnipage (OCR) to generate the searchable text and then generate the pdf file.

Hopefully after all that, I end up with a presentable file. If you find missing pages, pages in the wrong order, anything else wrong with the file or simply want to make a comment, please drop me a line (see above).

It is my hope that you find the file of use to you personally – I know that I would have liked to have found some of these files years ago – they would have saved me a lot of time !

Colin Hinson

In the village of Blunham, Bedfordshire.

PART LIST NO. 1092 (3rd EDITION)

creed

model 92 Mk III

MULTI-WIRE TAPE READER

Creed & Company Limited

C R E E D H O U S E

8, H I N D E S T. L O N D O N W.1

Telephone WELBECK 9121

Telex 262211

Cables TELEPRINTA · LONDON · W1

ITT

INTRODUCTION

This Part List contains names, part numbers and illustrations of all components in the Model 92 Mark III Multi-Wire Tape Reader which can be supplied separately as spare parts.

When ordering these parts the following information should be given:

1. Part Name
 2. Part Number
 3. Model of Machine
 4. Machine Serial Number
- } as shown on nameplate

NOTE: The suffix letters "C.P." after some of the parts in the list are an abbreviation of the words "complete part", which indicate an assembly of two or more smaller parts.

Clips, Nuts, Screws and Washers which are in common use and thus classed as "Standard" are not included in the text but are listed on Page 12. The quantity shown is the total number used per machine. Depending on the number of machines at each location it is suggested that a suitable supply of these items should be held, based on the quantities shown.

CONTENTS

	<i>Page</i>
Introductions and Ordering Instructions	2
Model 92 Mark III Multi-Wire Tape Reader	5
Tape Reader Assembly S.4181 Groups 1-4	5
Cover Plate C.P. 4181/101 Groups 1-4	7, 8 and 9
Feed Unit Final C.P. 4181/99 Groups 1-4	9
Tight Tape Assembly 3921/113	11
Cable and Plug Assembly CD 1931	11
Stop Bracket Assembly 4181/83	11
Standard Clips, Nuts, Screws and Washers	12
Tool Kit	13
Accessory List	13
Numerical Index	14

NOTE

Creed policy is one of continuous improvement and the right is reserved to revise equipment specifications and details published without prior notice.

As a result, it may arise from time to time that piece parts on individual machines are of an earlier or later pattern than those on which part list illustrations and numbers are based, and therefore not identical with the latter in detail.

Spare parts requirements may nevertheless be based on published part list data, since the Creed technical order editing service, applied to enquiries as well as orders, exists to provide a safeguard in the above circumstances.

Work is facilitated, however, if spares requirements are accompanied by details of the serial no(s), of the machine(s) for which parts are required, and the co-operation of customers in this respect will be appreciated.

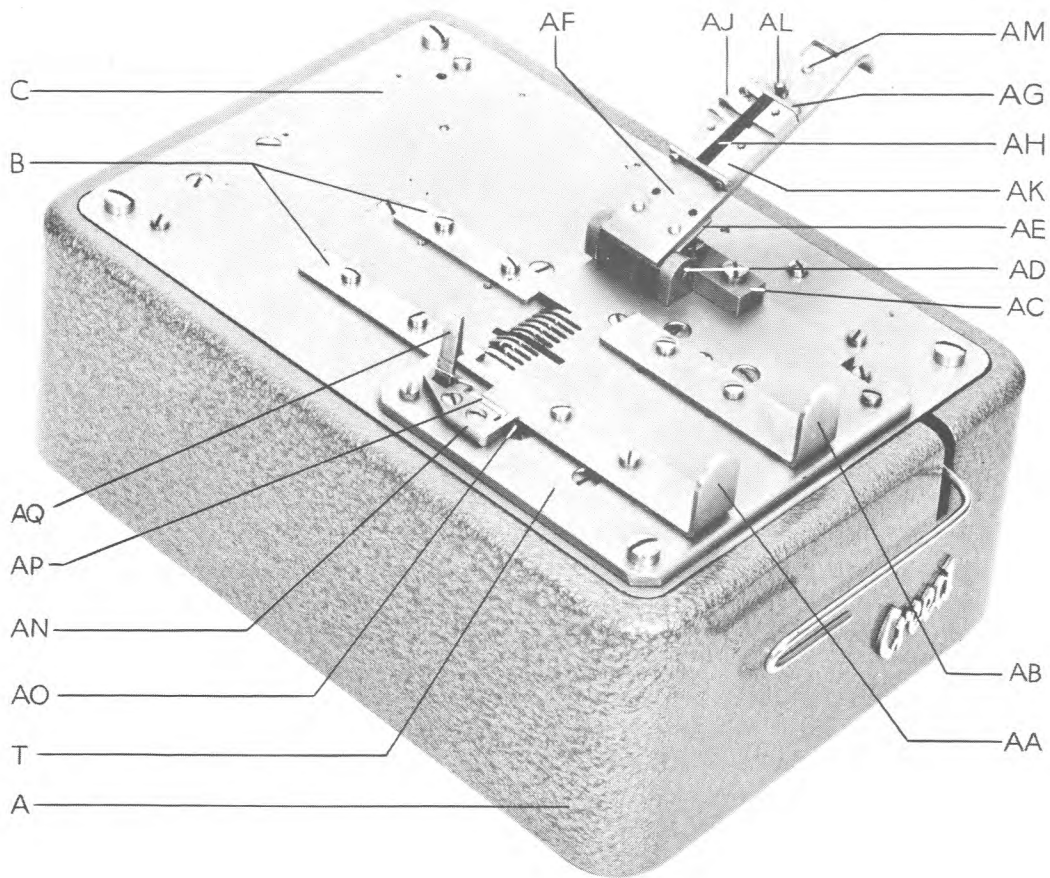
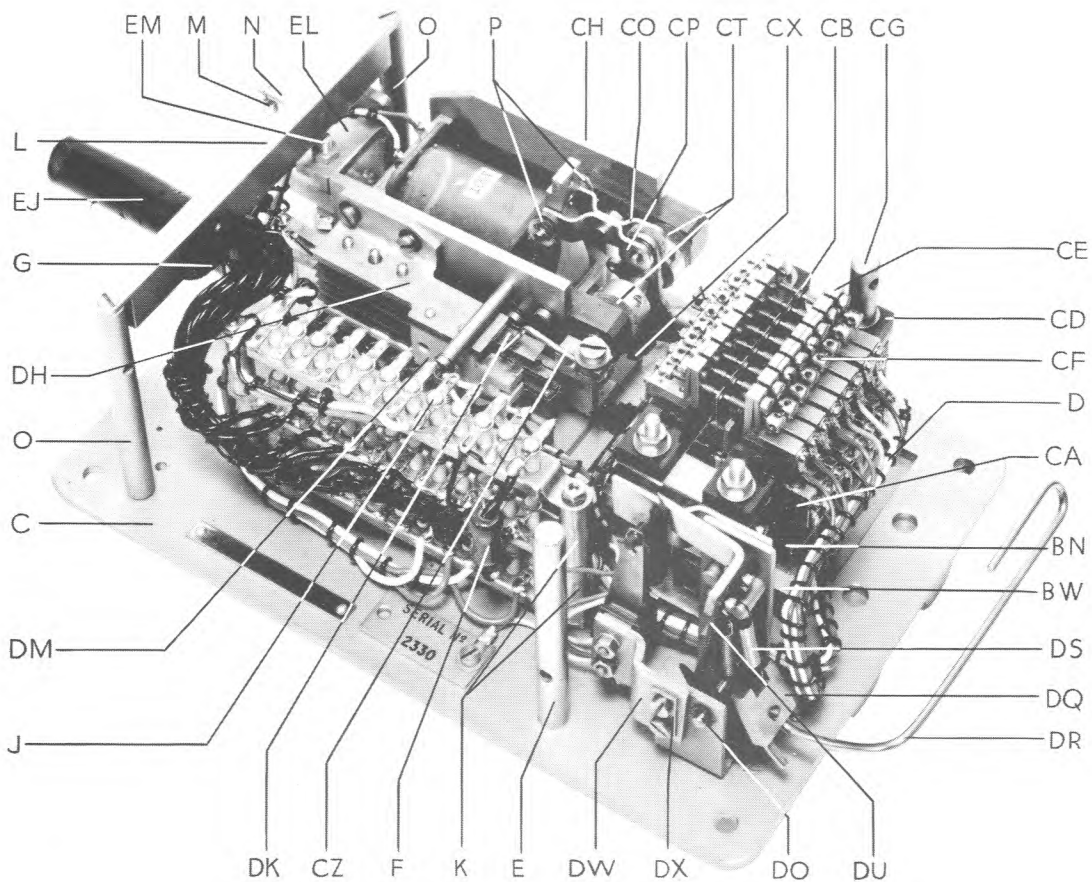


FIG. 1 MODEL 92 MARK III MULTI-WIRE TAPE READER



MODEL 92 MARK III MULTI-WIRE TAPE READER

(See Fig.1)

<i>Index Letter</i>	<i>Part No.</i>	<i>Part Name</i>
	S4181 GRP.1	Tape Reader Assembly (for 5-track tape)
	S4181 GRP.2 OR	Tape Reader Assembly (for 6-track tape)
	S4181 GRP.3 OR	Tape Reader Assembly (for 7-track tape)
	S4181 GRP.4 OR	Tape Reader Assembly (for 8-track tape)
A	3921/145	Housing Casting
	3921/146	Base Plate (not shown)
	1837/36	Rubber Foot (4 per set) not shown.

TAPE READER ASSEMBLY S4181 } GROUP 1, for 5-track tape.
GROUP 2, for 6-track tape.
GROUP 3, for 7-track tape.
GROUP 4, for 8-track tape.

(See Figs. 1, 2, 3, 5 and 6)

<i>Index Letter</i>	<i>Part No.</i>	<i>Part Name</i>
	4181/101 GRP.1	Cover Plate C.P. (for 5-track tape)
	4181/101 GRP.2 OR	Cover Plate C.P. (for 6-track tape)
	4181/101 GRP.3 OR	Cover Plate C.P. (for 7-track tape)
	4181/101 GRP.4 OR	Cover Plate C.P. (for 8-track tape)
B	4181/16	Guide Plate (2 per set)
C	4181/10	Main Plate
	4181/99 GRP.1	Feed Unit Final C.P. (for 100 Volt D.C. magnet)
	4181/99 GRP.2 OR	Feed Unit Final C.P. (for 50 Volt D.C. magnet)
	4181/99 GRP.3 OR	Feed Unit Final C.P. (for 24 Volt D.C. magnet)
	4181/99 GRP.4 OR	Feed Unit Final C.P. (for 12 Volt D.C. magnet)
	3921/113	Tight Tape Assembly C.P. See Page 11
D	CF1989	Internal Cableform
E	3921/84	Support Pillar
F	B03549/23	Resistor (100 ohms)
	CD1931	Cable and Plug Assembly (33-way) See Page 11
G	PK1177	Cable Clip (for securing Cable and Plug Assembly)
H	4181/72	Terminal Strip Screw (2 per set)
J	B04015/5	Terminal Strip (12-way) 3 per set.
K	PB1060	Spacer (4 per set) used on item H to position item J
L	4181/50	Cable Support
M	PG7590	Return Spring (used between items N and CJ)
N	PP6313	Return Spring Anchor (screwed into item L)
	4181/83	Stop Bracket Assembly C.P. See Page 11
O	4181/54	Support Pillar (2 per set) used to support item L
P	PF1151	Felt Lubricating Washer (2 per set) one used each side of items CO and CP
Q	4181/79	Pawl Cam Pillar (used to support item R)
R	4181/80	Pawl Cam Wire
S	PW5664-15	Special Washer (18 per set) for GRP.1 for securing connection tags on item D
	PW5664-15	OR Special Washer (21 per set) for GRP.2
	PW5664-15	OR Special Washer (24 per set) for GRP.3
	PW5664-15	OR Special Washer (27 per set) for GRP.4.

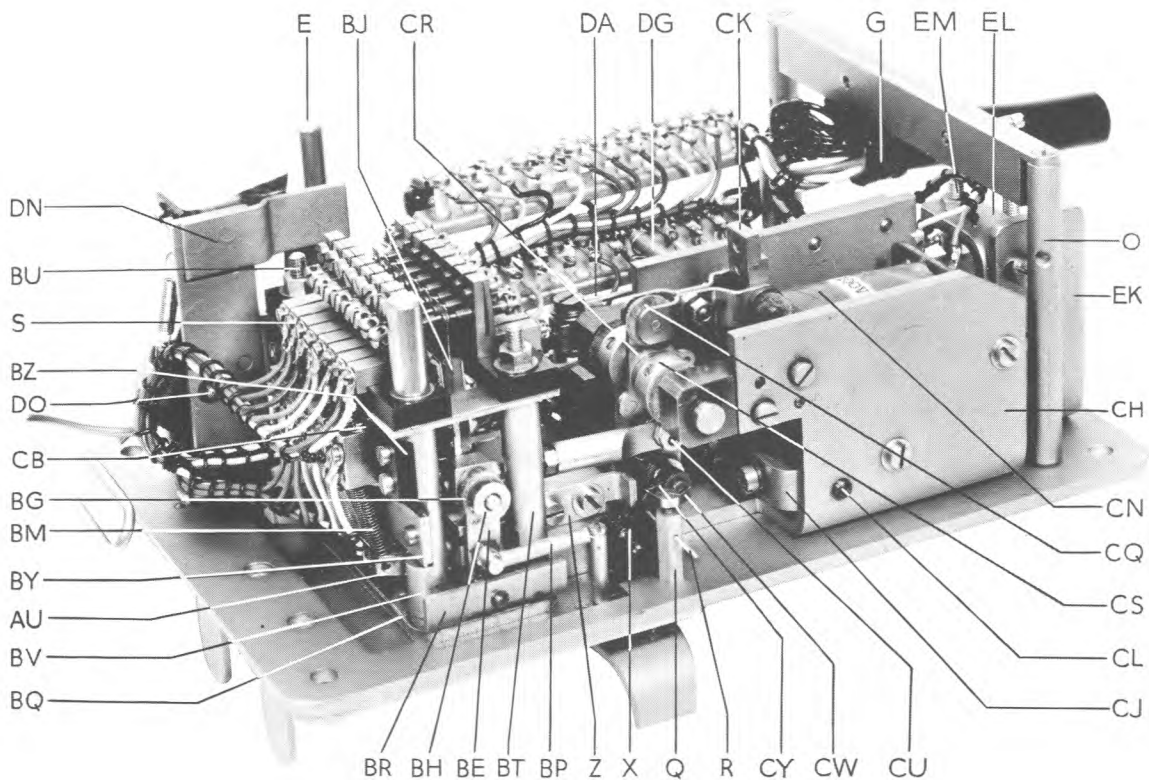


FIG. 3 TAPE READER ASSEMBLY S4181

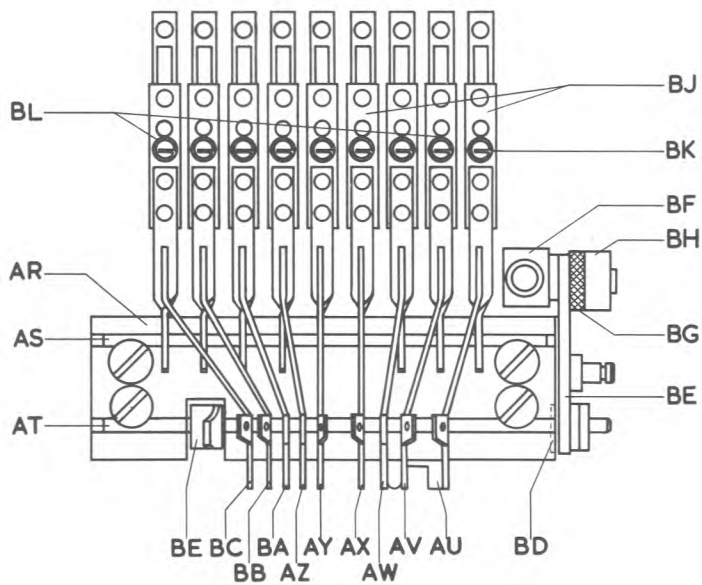


FIG. 4 LEVER BLOCK C.P. 4181/64

COVER PLATE C.P. 4181/101 { GROUP 1, for 5-track tape.
 (See Figs. 1, 2, 3, 4, 5 and 6) } GROUP 2, for 6-track tape.
 GROUP 3, for 7-track tape.
 GROUP 4, for 8-track tape.

Index Letter	Part No.	Part Name
	4181/63	Cover Plate Sub C.P. includes:-
T	4181/9	Cover Plate
U	4181/59	Ratchet End Bearing Block C.P.
V	4082/41	Bearing Block C.P. (Retention End) } bearings for item
W	4082/1	Tape Feed Wheel Shaft
X	3921/79	Ratchet
Y	3921/80	Detent Wheel
	23923A	Taper Pin (2 per set) for positioning items X and Y on item W
Z	4181/56	Pawl Stop (screwed to item U)
AA	4181/31	Tape and Gate Guide Plate
AB	4181/19	Tape Guide Plate (for GRPS.1 and 4 only)
	4181/18	OR Tape Guide Plate (for GRPS.2 and 3 only)
TAPE GATE ASSEMBLY (See Fig.1)		
	4181/62	Tape Gate Assembly C.P. includes:-
AC	4082/4	Retaining Plate Hinge
AD	3921/92	Retaining Plate Pivot
AE	3921/90	Pivot Clamp (for securing item AF)
AF	4181/13	Tape Retaining Plate
AG	3921/159	Side Plate (2 per set) for retaining item AH
AH	4181/12	Roller
AJ	4181/11	Tape Shoe (Rear)
AK	4181/14	Tape Shoe (Front)
AL	4082/28	Stop Stud
AM	4082/8	Catch Plate Screw
AN	4082/34	Catch Hinge Block
AO	PP1045	Parallel Pin Pivot (pivot for item AQ)
AP	PG3226	Catch Spring
AQ	4082/5	Catch Lever (for retaining item AF)
LEVER BLOCK ASSEMBLY (See Figs. 2, 3, 4 and 5)		
	4181/64 GRP. 1	Lever Block C.P. (for 5-track tape)
	4181/64 GRP. 2	OR Lever Block C.P. (for 6-track tape)
	4181/64 GRP. 3	OR Lever Block C.P. (for 7-track tape)
	4181/64 GRP. 4	OR Lever Block C.P. (for 8-track tape)
		} includes:-
AR	4181/1	Pecker Pivot Block
AS	PP6877	Parallel Pin (pivot for item BJ)
AT	PP6879	Parallel Pin (pivot for items AU, AV, AW, AX, AY, AZ BA, BB and BC)
AU	4181/2	Tape Out Lever
AV	4181/21	Pecker No.1.
AW	4181/22	Pecker No.2.
AX	4181/23	Pecker No.3.
AY	4181/24	Pecker No.4.
AZ	4181/25	Pecker No.5.
BA	4181/26	Pecker No.6 (for GRPS.2, 3 and 4 only)
BB	4181/27	Pecker No.7 (for GRPS.3 and 4 only)
BC	4181/28	Pecker No.8 (for GRP.4 only)
BD	PF1176	Felt Lubricating Washer (between items AR and BE)
BE	4181/55	Bail C.P.
BF	4181/96	Swivel Block
BG	PF1115	Felt Lubricating Washer (used between items BE and BH)
BH	CS1034-15	Set Collar and Screw (for retaining item BF)
BJ	4181/69 GRP. 1	Contact Lever C.P. (6 per set) for 5-track tape
	4181/69 GRP. 2	OR Contact Lever C.P. (7 per set) for 6-track tape
	4181/69 GRP. 3	OR Contact Lever C.P. (8 per set) for 7-track tape
	4181/69 GRP. 4	OR Contact Lever C.P. (9 per set) for 8-track tape
BK	3921/132	Special Contact Retaining Sprint (for Tape Out Lever Contact)
BL	3921/35	Contact Retaining Spring (5 per set) for GRP.1
	3921/35	OR Contact Retaining Spring (6 per set) for GRP.2
	3921/35	OR Contact Retaining Spring (7 per set) for GRP.3
	3921/35	OR Contact Retaining Spring (8 per set) for GRP.4

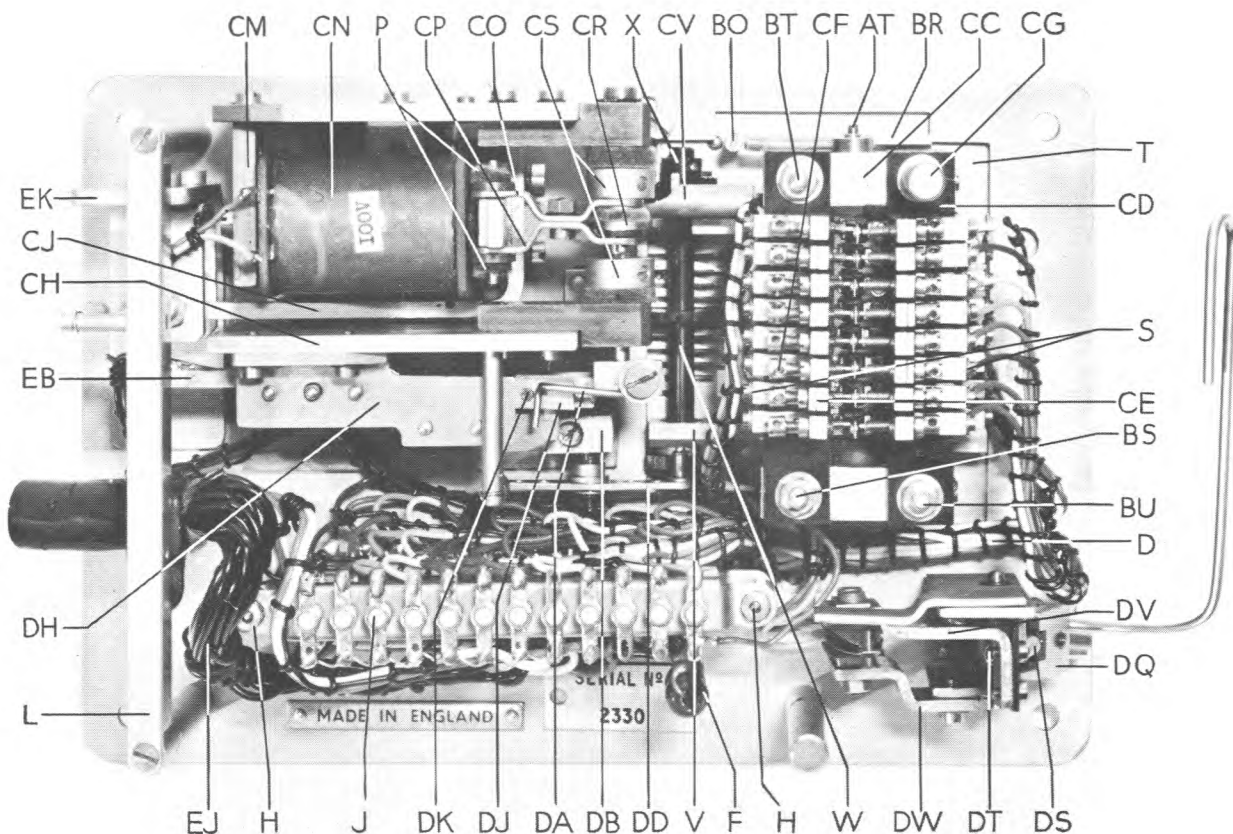


FIG. 5 TAPE READER ASSEMBLY S4181

COVER PLATE C.P. 4181/101 (Continued)

Index Letter	Part No.	Part Name
BM	3921/131	Special Lever Spring (used on item AU)
BN	3921/36	Lever Spring (5 per set) for GRP.1
	3921/36	OR Lever Spring (6 per set) for GRP.2
	3921/36	OR Lever Spring (7 per set) for GRP.3
	3921/36	OR Lever Spring (8 per set) for GRP.4
BO	PP6311	Spring Anchor
BP	PG7589	Bail Return Spring (used on item BO)
CONTACT BLOCK ASSEMBLY (See Figs. 2, 3, 5 and 6)		
BQ	4181/8	Lever Block Spacer (used between items T and AR)
BR	4181/81	Ball Shaft Support Bracket
BS	3921/34	Rear Support Pillar
BT	4181/45	Rear Support Pillar
BU	3921/33	Front Support Pillar
BV	4181/98	Front Support Pillar
	4181/73	Packing Piece (not shown) used under item BW
BW	4181/58	Bail Adjustment Block
	EC5086	Bail Stop Eccentric (not shown) used with item BW
BX	4181/5	Pecker Guide Plate (secured to items BU and BV)
BY	4181/6	Spring Anchor Plate (anchor for items BM and BN)
BZ	4181/7	Anchor Block Support (secured to items BU and BV)
CA	3921/30	Anchor Block (6 per set) for GRP.1
	3921/30	OR Anchor Block (7 per set) for GRP.2
	3921/30	OR Anchor Block (8 per set) for GRP.3
	3921/30	OR Anchor Block (9 per set) for GRP.4
CA	3921/29	Distance Piece (6 per set) for GRP.1
	3921/29	OR Distance Piece (7 per set) for GRP.2
	3921/29	OR Distance Piece (8 per set) for GRP.3
	3921/29	OR Distance Piece (9 per set) for GRP.4

} Not shown, used with screws to secure items CA to item BZ.

COVER PLATE C.P. 4181/101 (Continued)

Index Letter	Part No.	Part Name
CB	PW5664	Special Washer (6 per set) for GRP.1
	PW5664	OR Special Washer (7 per set) for GRP.2
	PW5664	OR Special Washer (8 per set) for GRP.3
	PW5664	OR Special Washer (9 per set) for GRP.4
CC	4181/17	Special Spacer (2 per set)
	PE5134	Insulating Strip (2 per set) not shown, used between items CC and CD
CD	4181/15	Special Mounting Strip (2 per set) used for mounting item CE
CE	4181/4	Contact Mounting (12 per set) for GRP.1
	4181/4	OR Contact Mounting (14 per set) for GRP.2
	4181/4	OR Contact Mounting (16 per set) for GRP.3
	4181/4	OR Contact Mounting (18 per set) for GRP.4
CF	PC3013	Contact Screw C.P. (12 per set) for GRP.1
	PC3013	OR Contact Screw C.P. (14 per set) for GRP.2
	PC3013	OR Contact Screw C.P. (16 per set) for GRP.3
	PC3013	OR Contact Screw C.P. (18 per set) for GRP.4
CG	4082/12	Special Pillar (used on item BV)

} used with a screw to secure items BK and BL

} used on item CE

FEED UNIT FINAL C.P. 4181/99

(See Figs. 2, 3, 5 and 6)

}	GROUP 1 for 100 VOLT magnet
	GROUP 2 for 50 VOLT magnet
	GROUP 3 for 24 VOLT magnet
	GROUP 4 for 12 VOLT magnet

Index Letter	Part No.	Part Name
CH	4181/100	Mounting Sub Assembly
	4181/61 GRP.1	Feed Unit Sub C.P. (for 100 VOLT magnet)
	4181/61 GRP.2	OR Feed Unit Sub C.P. (for 50 VOLT magnet)
	4181/61 GRP.3	OR Feed Unit Sub C.P. (for 24 VOLT magnet)
CJ	4181/82	Magnet Stop Arm C.P.
	4181/42	Armature C.P.
	3921/63	Armature Pivot (pivot for item CJ)
	3921/67	Yoke
CN	3921/64	Pivot Clamp (not shown) for retaining item CL
	4181/44	Magnet C.P. (100 VOLT magnet) for GRP.1
	4181/102	OR Magnet C.P. (50 VOLT magnet) for GRP.2
	4181/75	OR Magnet C.P. (24 VOLT magnet) for GRP.3
CO	4181/103	OR Magnet C.P. (12 VOLT magnet) for GRP.4
	4181/39	Link Lever C.P. (R.H.)
	4181/41	Link Lever C.P. (L.H.)
	CP	PF1095
CR	4181/91	Feed Lever 2nd C.P.
CS	CS1072	Set Collar and Screw (2 per set) for positioning item CR
CT	PF1118	Felt Lubricating Washer (2 per set)
CU	PP9256	Bail Lever Swivel Pin (for positioning items CR and CV)
CV	4181/95	Bail Lever Socket (this item is secured to item BE by a 6BA screw)
CW	3921/69	Pawl Pivot Screw (pivot for item CY)
CX	3921/71	Locknut (used on item CW)
	4181/53	Pawl Spring (used on item CY)
	3921/70	Pawl Spacer (used between items CR and CY)
CY	3921/72	Pawl
CZ	4181/35	Arm Carrier (used on item CR)
DA	4181/51	Switch Lever (mounted on item CZ)
DB	4181/65	Retention Pivot Block
DC	4082/32	Retention Arm Pivot (mounted on item DB)
DD	4181/87	Detent Lever C.P. (mounted on item DC)
DE	3921/55	Detent Roller
DF	3921/130	Detent Spring (used between items DD and DG)
DG	PP6312	Retention Spring Anchor (mounted on item CH)
	4181/38	Feed Contact Assembly C.P. includes:-
DH	4181/36	Contact Mounting Bracket
DJ	4181/33	Spring Blade
DK	PE2012	Stud (nylon) used on item DJ
DL	BO6626	Spring Set
DM	BO4022/2	Buffer Block
	BO4023	Buffer Block Plate (not shown) used on item DM

} includes:-

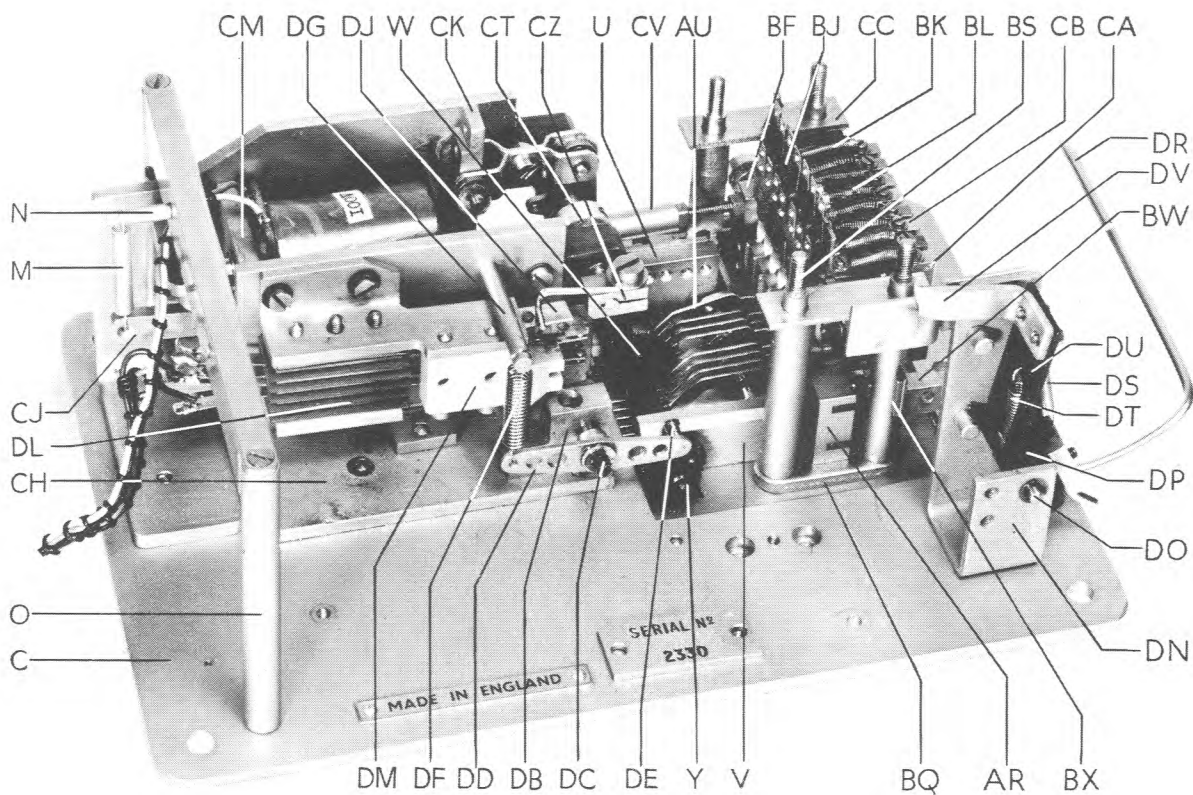


FIG. 6 TAPE READER (PARTIAL ASSEMBLY)

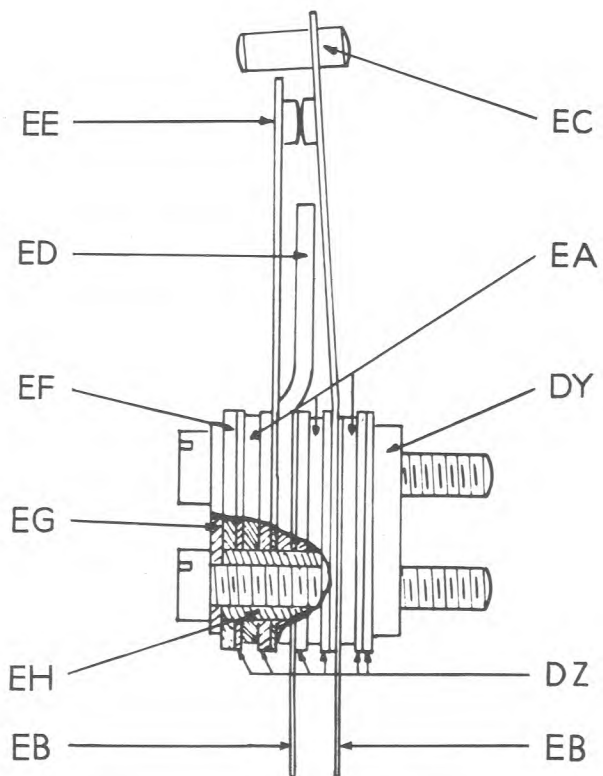


FIG. 7 CONTACT ASSEMBLY C.P. 3921/108

TIGHT TAPE ASSEMBLY C.P. 3921/113

(See Figs. 2, 3, 5, 6 and 7)

<i>Index Letter</i>	<i>Part No.</i>	<i>Part Name</i>
DN	3921/104	Tight Tape Bracket C.P.
DO	3921/6	Spindle (<i>pivot for item DP</i>)
	PW5660	Special Washer (<i>4 per set</i>) <i>not shown</i> , 2 used each side, between items DN and DP
DP	3921/7	Pivot Bracket
DQ	3921/1	Tape Arm Clamp Plate
DR	3921/2	Tight Tape Arm
DS	3921/12	Tension Spring (<i>for item DP</i>)
DT	3921/13	Retaining Spring (<i>used between items DO and DU</i>)
DU	3921/9	Knife Arm
DV	3921/4	Knife (<i>secured to item DU by two screws</i>)
DW	3921/19	Contact Bracket "A" (<i>for securing Contact Assembly C.P.</i>)
DX	3921/3	Keep Plate (<i>used with item DW</i>)
	3921/108	Contact Assembly C.P. <i>includes:-</i>
DY	3921/16	Bottom Plate
DZ	3921/14	Spacer "A" (<i>6 per set</i>)
EA	3921/15	Spacer "B" (<i>3 per set</i>)
EB	3921/21	Solder Tag (<i>2 per set</i>)
EC	3921/107	Contact Blade "B" C.P.
ED	3921/22	Damper (<i>used between items EB and EE</i>)
EE	3921/105	Contact Blade "A" C.P.
EF	3921/20	Top Plate
EG	3921/3	Keep Plate
EH	3921/23	Insulating Sleeve (<i>2 per set</i>)

CABLE AND PLUG ASSEMBLY CD 1931

(See Figs. 2 and 5)

<i>Index Letter</i>	<i>Part No.</i>	<i>Part Name</i>
EJ	CF1988	Cableform (<i>33-way</i>)
	B07608/3	Plug (<i>33-way</i>) <i>not shown</i>
	B07608/12	Cover (<i>end entry</i>) <i>not shown</i>
	B07608/4	Socket (<i>33-way</i>) <i>not shown</i>

STOP BRACKET ASSEMBLY 4181/83

(See Figs. 2, 3 and 5)

<i>Index Letter</i>	<i>Part No.</i>	<i>Part Name</i>
EK	4181/78	Stop Bracket Mounting Plate
EL	4181/84	Stop Plate
EM	4181/74	Stop Screw C.P. (<i>2 per set</i>) <i>one used each side of item CJ</i>

**STANDARD
CLIPS, NUTS, SCREWS AND WASHERS**

CLIPS

QUANTITY

B03225	Anderton Clip	2
B03229	Anderton Clip	3
B03230	Anderton Clip	1
B03232	Anderton Clip	1

NUTS

PN1009-15	Std. 4BA Hex M.S.	3
PN1013-15	Std. 6BA Hex M.S.	12
PN1513-15	Std. 6BA Lock M.S.	2

SCREWS

PS1314-15	Std. 2BA x 3/8" Fil. Hd. M.S.	4
PS1676-15	Std. 4BA x 1/4" Ch.Hd. M.S.	2
PS1678-15	Std. 4BA x 1/4" Csk. Hd. M.S.	8
PS1687-15	Std. 4BA x 5/16" Ch.Hd. M.S.	3
PS1694-15	Std. 4BA x 3/8" Ch.Hd. M.S.	5
PS1700-15	Std. 4BA x 3/8" Fil. Hd. M.S.	2
PS1710-15	Std. 4BA x 7/16" Csk. Hd. M.S.	4
PS2045-15	Std. 6BA x 3/16" Ch. Hd. M.S.	3
PS2047-15	Std. 6BA x 3/16" Csk. Hd. M.S.	4
PS2051-15	Std. 6BA x 3/16" Fil. Hd. M.S.	10
PS2057-15	Std. 6BA x 7/32" Ch. Hd. M.S.	3
PS2061-15	Std. 6BA x 1/4" Ch. Hd. M.S.	6
PS2063-15	Std. 6BA x 1/4" Csk. Hd. M.S.	4
PS2067-15	Std. 6BA x 1/4" Fil. Hd. M.S.	4
PS2075-15	Std. 6BA x 9/32" Ch. Hd. M.S.	2
PS2077-15	Std. 6BA x 5/16" Ch. Hd. M.S.	3
PS2085-15	Std. 6BA x 5/16" Inst. Hd. M.S.	4
PS2089-15	Std. 6BA x 11/32" Ch.Hd. M.S.	4
PS2095-15	Std. 6BA x 3/8" Csk.Hd. M.S.	1
PS2099-15	Std. 6BA x 3/8" Fil. Hd. M.S.	1
PS2111-15	Std. 6BA x 7/16" Csk. Hd. M.S.	2
PS2138-15	Std. 6BA x 7/32" Inst. Hd. M.S.	2
PS2173-15	Std. 6BA x 11/16" Ch. Hd. M.S.	2
PS2189-15	Std. 6BA x 3/4" Ch. Hd. M.S.	2
PS2253-15	Std. 6BA x 1" Ch. Hd. M.S.	1
PS2445-15	Std. 8BA x 3/16" Ch. Hd. M.S.	22
PS2451-15	Std. 8BA x 3/16" Fil. Hd. M.S.	4
PS2478-15	Std. 8BA x 5/16" Ch. Hd. BR.	4
PS2815-15	Std. 10BA x 1/8" Ch. Hd. M.S.	36
PS2842-15	Std. 10BA x 7/32" Ch. Hd. M.S.	4
PS2847-15	Std. 10BA x 1/4" Ch.Hd. M.S.	18
PS2860-15	Std. 10BA x 5/16" Ch. Hd. M.S.	18
PS6113-15	Std. 12BA x 1/8" Ch. Hd. M.S.	9

WASHERS

PW1009-15	Std. 4BA M.S.	10
PW1013-15	Std. 6BA M.S.	4
PW2025	Std. 4BA S.C. Spring Washer	2
PW2037	Std. 6BA S.C. Spring Washer	7
PW4139	Std. 6BA Lock Washer	1
PW5610	Std. 8BA Shakeproof Washer	2
PW5662-15	Std. 12BA M.S.	9

**CREED TOOL KIT NO. 92
FOR MODEL 92 TAPE READER.**

<i>Part No.</i>	<i>Qty.</i>	<i>Description</i>
TA. 1187	1	Screwdriver 5" x 1/8"
TA. 1148	1	Screwdriver 5" x 1/4"
TA. 1053	1	Screwdriver 4" x 1/10"
TA. 1039	1	Spanner OBA. x 2BA.
TA. 1022	1	Spanner 4BA. x 6BA.
TA. 1020	1	Tommy Pin (Small)
TA. 1027	1	Burnisher
TA. 1008	1	Spring Hook
TA. 1130	1	Spring Hook (Push)
8199	1	Pair of Tweezers
8620	1	Oil Can
9102	1	Set of Feeler Gauges
16767	1	Pair of Snipe-Nose Pliers

**CREED ACCESSORIES LIST NO. 92
FOR MODEL 92 TAPE READER.**

<i>Part No.</i>	<i>Qty.</i>	<i>Description</i>
TA. 1096	1	1/4 pint Can No. 2 Lubricant (Medium Oil)
	1	Instruction Booklet No. 92
	1	Part List No. 1092
TA. 1317	1	Tube No. 6 Lubricant

