

Please do not upload this copyright pdf document to any other website. Breach of copyright may result in a criminal conviction.

This Acrobat document was generated by me, Colin Hinson, from a document held by the Henlow Signals Museum, believed to be out of copyright. It is presented here (for free) and this pdf version of the document is my copyright in much the same way as a photograph would be. If you believe the document to be under other copyright, please contact me.

The document should have been downloaded from my website <https://blunham.com/Radar>, or any mirror site named on that site. If you downloaded it from elsewhere, please let me know (particularly if you were charged for it). You can contact me via my Genuki email page: <https://www.genuki.org.uk/big/eng/YKS/various?recipient=colin>

You may not copy the file for onward transmission of the data nor attempt to make monetary gain by the use of these files. If you want someone else to have a copy of the file, point them at the website. (<https://blunham.com/Radar>). Please do not point them at the file itself as it may move or the site may be updated.

It should be noted that most of the pages are identifiable as having been processed by me.

I put a lot of time into producing these files which is why you are met with this page when you open the file.

In order to generate this file, I need to scan the pages, split the double pages and remove any edge marks such as punch holes, clean up the pages, set the relevant pages to be all the same size and alignment. I then run Omnipage (OCR) to generate the searchable text and then generate the pdf file.

Hopefully after all that, I end up with a presentable file. If you find missing pages, pages in the wrong order, anything else wrong with the file or simply want to make a comment, please drop me a line (see above).

It is my hope that you find the file of use to you personally – I know that I would have liked to have found some of these files years ago – they would have saved me a lot of time !

Colin Hinson

In the village of Blunham, Bedfordshire.

CAM UNIT TYPE 3

(Overlap pattern)

Creed & Company Limited

TELEGRAPH HOUSE
CROYDON, ENGLAND

Telegraphic Address:
CREDO, TELEX, CROYDON

Telex: 28836

Telephone:
MUNICIPAL 2424



AMENDMENTS TO PART LIST NO. 3750 (2ND EDITION)

CAM UNIT TYPE 3 (OVERLAP PATTERN)

This Technical Information Supplement amends the text of the above Part List to conform with Overlap Cam Units now being supplied.

		<i>ALTER ITEM</i>		<i>TC READ</i>	
<i>Page</i>	<i>Index Letter</i>	<i>Part No.</i>	<i>Part Name</i>	<i>Part No.</i>	<i>Part Name</i>
3	AA2	PP4029	Spring Anchor Pin	PP4028	Spring Anchor Pin
3	AA3	PP4031	Spring Anchor Pin	PP4030	Spring Anchor Pin
5	AP	3750/62	Upper Rack	3750/62A	Upper Rack
5	AR	PS2173-1	Std. 6BA Screw	PS2189-1	Std. 6BA Screw
5	BD1	3750/23	Finger Plunger	3750/23A	Finger Plunger
5	BD2	3750/24	Finger Pivot	3750/24A	Finger Pivot
7	CA	3750/280	Adjusting Block Bracket C.P.	3750/280A	Adjusting Block Bracket C.P.
7	CQ	3750/238	Orientation Link C.P.	3750/238A	Orientation Link C.P.
7	CR	3750/242	Orientation Roller Pivot C.P.	3750/242A	Orientation Roller Pivot C.P.
7	CS	RL1002	Roller	RL1204	Roller
7	CY	PN1013-1	Std. 6BA Nut	PN5103	Special Nut
13	HC	3750/169	Selector Driving Gear C.P.	3835/537	Selector Driving Gear C.P.
13	HC1	GR2170A	Gear	3835/538	Gear
13	HC2	3750/49	Gear Boss	3835/539	Gear Boss
13	HD	3750/369	Gear Driving Collar C.P.	3835/535	Gear Driving Collar C.P.
13	HD1	3750/55	Collar	3835/536	Collar
13	JE	3750/86	Retention Lever Bracket	3750/86A	Retention Lever Bracket
14	JM	PG7372	Tension Spring	PG7372A	Tension Spring
14	-	3750/237	Finger Lift Lever C.P.	3750/383	Finger Lift Lever C.P.
14	JP	3750/306	Finger Lift Lever Sub C.P.	3750/384	Finger Lift Lever Sub C.P.
14	J2	3750/307	Finger Lift Lever Extension C.P.	3750/389	Finger Lift Lever Extension C.P.
14	KE	PW1009-1	Std. 4BA Washer	PW5650	Special Washer
14	KH	3750/278A	Rockshaft C.P.	3750/278B	Rockshaft C.P.
14	KV	3750/309A	Backing Plate	3750/309B	Backing Plate
14	KW	3750/120A	Rocker Blade	3750/120B	Rocker Blade
15	LC12	PS2445-1	Std. 8BA Screw	PS2457-1	Std. 8BA Screw
15	-	3750/378	Friction Damping Assembly	3750/378A	Friction Damping Assembly
15	LN	3750/386	Support Bracket C.P.	3750/386A	Support Bracket C.P.

ITEMS TO BE INSERTED

INSERT

<i>Page</i>	<i>Following Index Letter</i>	<i>Part No.</i>	<i>Part Name</i>
7	CH	PW1009-1	Std. 4BA Washer
11	FF	1830/206	Resetting Bellcrank (<i>For Model 85 or 86 Printing Reperforators only</i>)
13	HD3	PP1128	Parallel Pin
13	JE	3750/397	Retention Lever Guide
15	LL	1841/81	Armature Link C.P. (<i>For machines fitted with Starter Switch S3808</i>)

1st Edition Printed January 1954

2nd Edition Printed April 1955

C A M U N I T , T Y P E 3

(Overlap Pattern)

In conjunction with the fitting of a Cam Unit, Type 3, the following parts are changed associated units:

COMBINATION HEAD UNIT (Part List No. 1078, 9th edition reprint)

- (a) 3750/272 Bellcrank Lifting Collar C.P.
 Replaces 1926/3 Bellcrank Lifting Collar C.P. (Page 27, item O).

- (b) 3750/140 Comb Stop (When Reperforating Attachment is
 NOT fitted).
 or 1926/7 Comb Stop (When Reperforating Attachment IS
 fitted).
 Replaces 1826/24 Comb Stop (Page 29, item AV).

TYPEHAMMER UNIT (Part List No. 1078, 9th edition reprint)

- (c) 3750/138 Typehammer Link.
 Replaces 1834/9 Typehammer Link (Page 38, item AC).

CONTROL LEVER UNIT (Part List No. 1078, 9th edition reprint)

- (d) 1838/34 Jumper Shaft.
 Replaces 1838/148 Jumper Shaft (Page 31, item AE).

- (e) 1838/157 Jumper Shaft Arm.
 Replaces 1838/149 Jumper Shaft Arm (Page 31, item AE).

ELECTROMAGNET UNIT (Part List No. 1078, 9th edition reprint)

- 2848/73 Spring Anchor
- PS.2494-1 Std. 6BA Screw
- PW.2050 Std. 6BA Spring Washer
- Replaces* PB.2080 Bush (Page 40, fitted in item G) } *For securing Spring Anchor*

- 2848/74 Bias Spring Slide.
- Replaces* 2848/13A Bias Spring Slide (Page 41, item R)

- PG.7368 Tension Spring (2 per set).
- Replaces* PG.7351 Tension Spring (Page 41, item X)

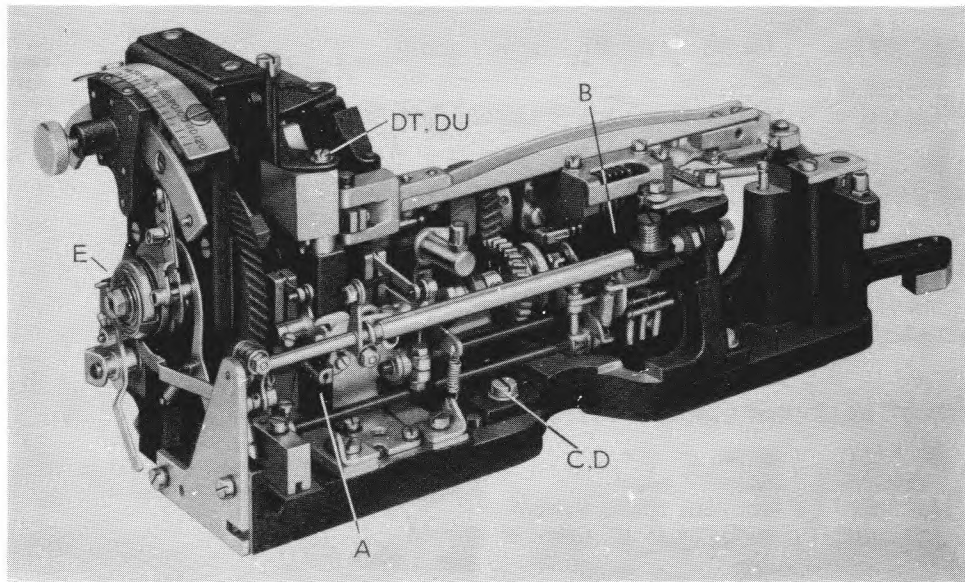


FIG. 1. CAM UNIT, TYPE 3.

C A M U N I T, T Y P E 3

(See Fig.1)

<i>Index Letter</i>	<i>Part No.</i>	<i>Part Name</i>	
A		CAM UNIT PARTIAL ASSEMBLY	See page 9
B	3750/290	SELECTOR UNIT	See page 3
C	PS.1332-1	Std. 2BA Screw	} 3 of each per set for securing item B.
D	PW.1005-1	Std. 2BA Washer	
E		ORIENTATION DEVICE	See page 7

S E L E C T O R U N I T 3750/290

(See Figs. 2 and 3)

<i>Index Letter</i>	<i>Part No.</i>	<i>Part Name</i>	
<i>CASTING</i>			
AA	3750/163	Selector Unit Casting C.P., comprises machined and enamelled casting assembled with the following parts:-	
AA1	PB.4064	Oil impregnated Bush (for item AW).	
AA2	PP.4029-1	Spring Anchor Pin (for items AG and AJ).	
AA3	PP.4031-1	Spring Anchor Pin (for item AJ).	
AA4	EC.1543	Eccentric Pin (Stop pin for item AH).	
	PW.1009-1	Std. 4BA Washer	} Not visible. (For securing item AA4)
	PW.2026	Std. 4BA Spring Washer	
	PN.1009-1	Std. 4BA Nut	
AA5	3750/32	Pivot (for items AF and AH).	
	PS.2061-1	Std. 6BA Screw	} Not visible. (For clamping item AA5)
	PW.2037	Std. 6BA Spring Washer	
AA6	PS.5923	Cone pointed Screw	} Pivot for Rockshaft, item LF
AA7	PN.1505-1	Std. 2BA Lock Nut	
AA8	PB.1449	Bearing Bush (2 per set)	} Customers must be prepared to line ream the holes for item AA8 in conjunction with item AA.
AB	3750/6	Bearing Bracket	
AC	PS.1687-1	Std. 4BA Screw (2 per set) for securing item AB	
AD	3750/230	Lubricator C.P. includes:-	
AD1	3750/366	Wick.	
AE	PS.2061-1	Std. 6BA Screw (for securing item AD).	

CHOPPER LEVER, CODE LEVERS AND RACK

AF	3750/141	Chopper Lever.	
AG	PG.7364A	Tension Spring (for item AF).	
AH	3750/161	Code Lever C.P.	} 5 of each per set.
AJ	PG.7367	Tension Spring	
AK	PW.5221	Spacing Washer (Between item AF and last AH).	
AL	3750/368	Lower Rack C.P. comprises:-	
AL1	3750/36	Rack.	
AL2	3750/37	Rack Support.	
AL3	PW.2037	Std. 6BA Spring Washer	} 2 of each per set for securing item AL1 to item AL2.
AL4	PS.2061-1	Std. 6BA Screw	
AM	PS.2157-1	Std. 6BA Screw (2 per set) for securing item AL2.	

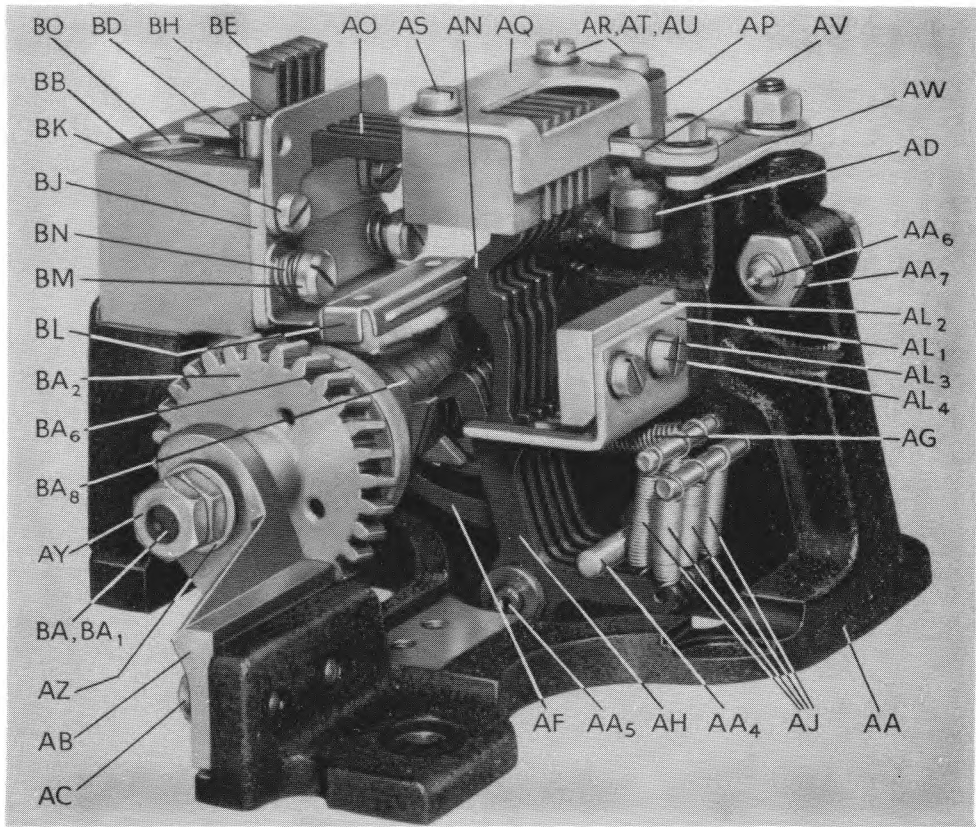


FIG. 2. SELECTOR UNIT.

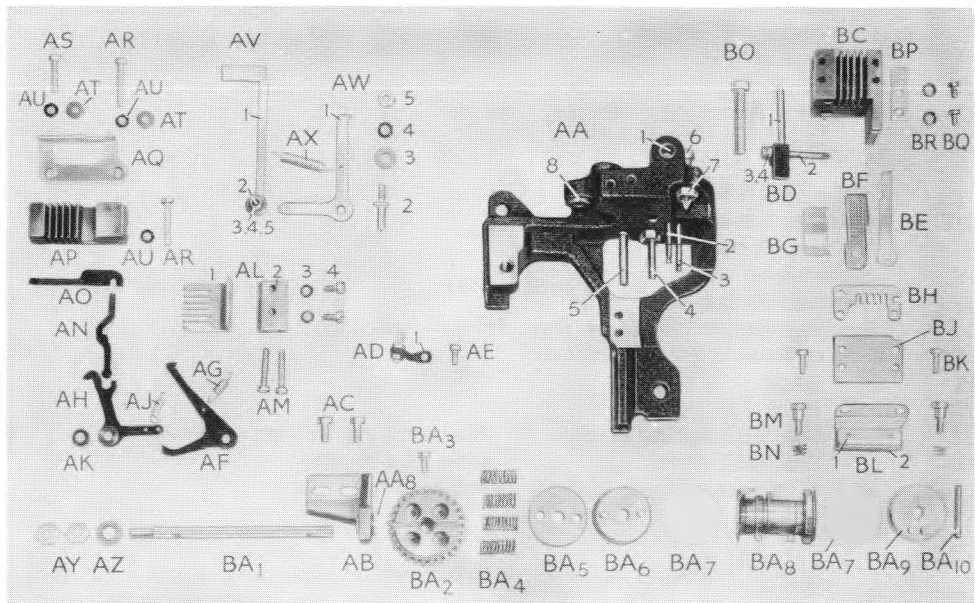


FIG. 3. SELECTOR UNIT COMPONENTS.

SELECTOR UNIT 3750/290 (CONTD.)

<i>Index Letter</i>	<i>Part No.</i>	<i>Part Name</i>	
SEQUENTIAL LEVERS, PUSH RODS AND RACK			
AN	3750/31	Sequential Lever	} 5 of each per set.
AO	3750/29	Push Rod	
AP	3750/62	Upper Rack	
AQ	3750/64	Keep Plate	
AR	PS.2173-1	Std. 6BA Screw (2 per set)	} For securing items AP and AQ.
AS	PS.2077-1	Std. 6BA Screw	
AT	PW.1013-1	Std. 6BA Washer (2 per set)	
AU	PW.2037	Std. 6BA Spring Washer (3 per set)	
FINGER RESETTING LINKS			
AV	3750/267	Resetting Link C.P. includes:-	
AV1	3750/69	Link	
AV2	PP.8858	Link Pivot	
AV3	PW.1013-1	Std. 6BA Washer	
AV4	PW.2037	Std. 6BA Spring Washer	
AV5	PN.1013-1	Std. 6BA Nut	
AW	3750/268	Resetting Link Lever C.P. comprises:-	
AW1	3750/70	Link Lever	
AW2	PP.8859	Link Lever Pivot	
AW3	PW.1009-1	Std. 4BA Washer	
AW4	PW.2026	Std. 4BA Spring Washer	
AW5	PN.1009-1	Std. 4BA Nut	
AX	PG.7209	Tension Spring (for item AW)	
SELECTOR CAM SHAFT			
AY	PN.1505-1	Std. 2BA Lock Nut (2 per set)	
AZ	PW.1005-1	Std. 2BA Washer	
BA	3750/236	Selector Cam Assembly comprises:-	
BA1	3750/19	Spindle	
BA2	GR.2171	Gear	
BA3	PS.2061-1	Std. 6BA Screw (for securing item BA2)	
BA4	PG.5093B	Clutch Spring (4 per set)	
BA5	PW.5587	Clutch Shim (3 maximum)	
BA6	3750/218	Spring Pressure Plate C.P.	
BA7	PF.1093	Friction Disc (Felt) 2 per set.	
BA8	3750/151	Cam Sleeve C.P. includes:-	
	PB.1465-1	Oil impregnated Bush (2 per set). Not visible. Customers must be prepared to align these items to the axis of the Spindle, item BA1.	
BA9	3750/162	Driving Disc C.P.	
BA10	PP.6776	Driving Pin	
COMB SETTING FINGER BLOCK			
BB	3750/61A	Comb Setting Finger Block C.P. comprises:-	
BC	3750/165	Finger Block Sub. C.P.	
BD	3750/364	Finger Pivot C.P. comprises:-	
BD1	3750/23	Finger Plunger	
	3750/25	Link Pivot (Not visible)	
BD2	3750/24	Finger Pivot	
BD3	PW.2037	Std. 6BA Spring Washer	} 2 of each per set, for securing item BD2.
BD4	PN.1513-1	Std. 6BA Lock Nut	
BE	3750/20	Comb Setting Finger	
BF	3750/142	Finger Damper C.P. (canvas)	} 5 of each per set.
BG	PG.2120	Comb Setting Finger Spring	
BH	3750/28	Push Rod Rack	
BJ	3750/27A	Front Plate	
	3750/375	Shim	
BK	PS.2077-1	Std. 6BA Screw (2 per set). For securing item BH and BJ.	
BL	3750/160	Lubricator C.P. includes:-	
BL1	3750/65	Lubricator Frame	
BL2	PF.1094	Lubricator Felt	
BM	PS.5610	Special Screw	} 2 of each per set for securing item BL.
BN	PG.5094	Compression Spring	
BO	PS.1407-1	Std. 2BA Screw (for securing item BB)	
BP	3750/21	Keep Plate	
BQ	PS.2045-1	Std. 6BA Screw	} 2 of each per set for securing item BP.
BR	PW.2037	Std. 6BA Spring Washer	

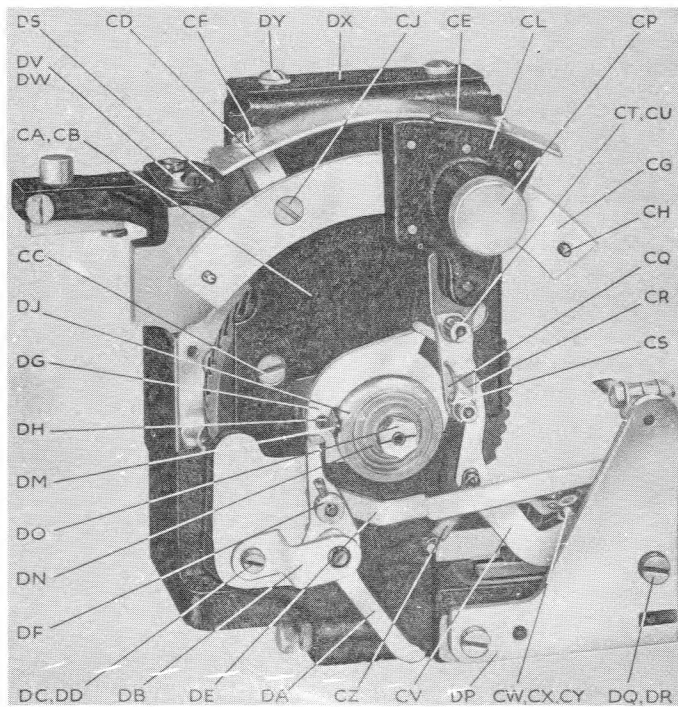


FIG. 4 ORIENTATION DEVICE.

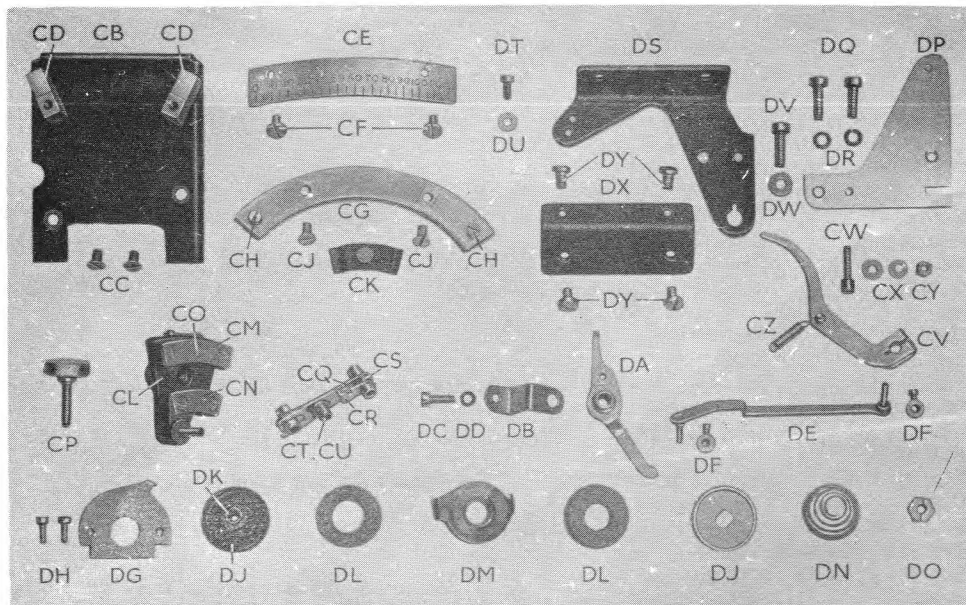


FIG. 5. ORIENTATION DEVICE COMPONENTS

O R I E N T A T I O N D E V I C E

(See Figs. 4 and 5)

<i>Index Letter</i>	<i>Part No.</i>	<i>Part Name</i>	
ORIENTATION SCALE AND ADJUSTING BLOCK			
CA	3750/280	Adjusting Block Bracket C.P. <i>comprises:-</i>	
CB	3750/358	Support Plate C.P.	
CC	PS.1678-1	Std. 4BA Screw (2 per set) for securing item CB.	}
CD	2845/42	Guide Support Block (2 per set)	
	PS.1676-1	Std. 4BA Screw (2 per set). <i>Not visible.</i>	
		For securing item CD.	
CE	3750/221	Orientation Scale	}
CF	PS.5289	Special Screw (2 per set)	
CG	2845/43	Adjusting Block Guide	
CH	PS.5621	Special Screw (2 per set). <i>Stops for item CL.</i>	
CJ	PS.1676-1	Std. 4BA Screw (2 per set) for securing item CG.	
CK	2845/32	Adjusting Block Friction Spring C.P.	
CL	2845/37	Orientation Adjusting Block C.P. (<i>comprises pointer, block and driven in pins</i>).	
CM	2845/40	Retaining Plate (<i>top</i>).	
CN	2845/31	Retaining Plate (<i>bottom</i>).	
CO	PS.2095-1	Std. 6BA Screw (5 per set) for securing item CM and CN.	
CP	PS.6893	Knurled head Screw (<i>Clamping Screw for item CL</i>).	
CQ	3750/238	Orientation Link C.P.	
CR	3750/242	Orientation Roller Pivot C.P.	
CS	RL.1002	Roller.	
CT	PW.5190	Special Washer	}
CU	PN.6026	Special Nut	
SELECTOR CAM DETENT RELEASE			
CV	3750/274	Release Lever C.P.	}
CW	PS.2136-1	Std. 6BA Screw.	
CX	PW.1013-1	Std. 6BA Washer (2 per set)	
CY	PN.1013-1	Std. 6BA Nut	
CZ	PG.7227	Tension Spring.	
PILOT CAM DETENT AND LINK			
DA	3750/206	Pilot Cam Detent C.P.	
DB	2845/49	Detent Retaining Plate.	
DC	PS.2061-1	Std. 6BA Screw	}
DD	PW.2037	Std. 6BA Spring Washer	
DE	3750/156	Detent Link C.P.	
DF	CS.1013	Set Collar and Screw (2 per set).	
PILOT CAM			
DG	3750/346	Retaining Ring C.P.	
DH	PS.2075-1	Std. 6BA Screw (2 per set). <i>For securing item DG.</i>	
DJ	2845/34	Clutch Pressure Plate (2 per set).	
DK	3750/195	Clutch Body.	
DL	PF.1091	Friction Disc (<i>Felt</i>) 2 per set.	
DM	3750/193	Pilot Cam	
DN	PG.5095	Clutch Spring.	
DO	PN.5079	Clutch Nut	
END PLATE AND GEAR COVER			
DP	3750/155	End Plate C.P.	
DQ	PS.1694-1	Std. 4BA Screw	}
DR	PW.2026	Std. 4BA Spring Washer	
DS	3750/180	Gear Cover and Support Plate.	
DT	PS.2061-1	Std. 6BA Screw	}
DU	PW.1013-1	Std. 6BA Washer	
DV	PS.1717-1	Std. 4BA Screw	
DW	PW.1009-1	Std. 4BA Washer	
DX	3750/219	Adjusting Plate C.P.	
DY	PS.5367	Special Screw (4 per set) for securing item DX to item CB and to DS.	

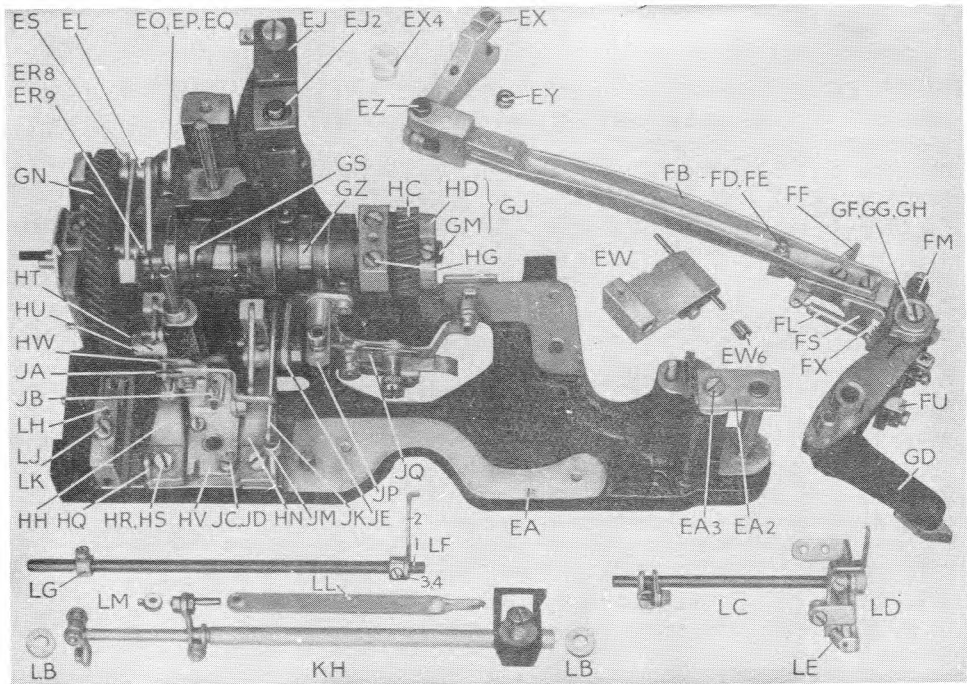


FIG. 6 CAM UNIT PARTIAL ASSEMBLY.

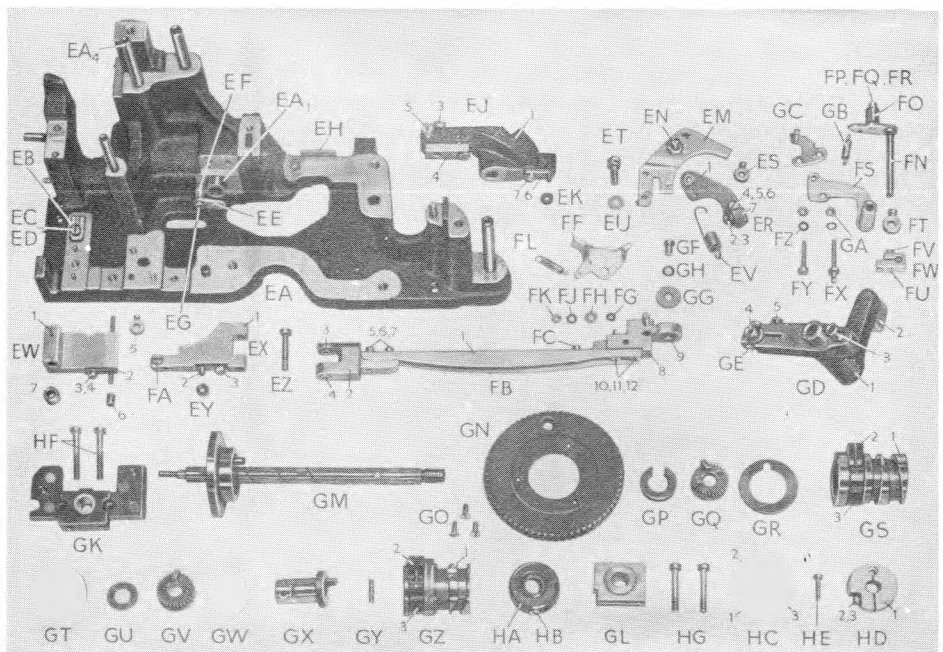


FIG. 7 PARTIAL ASSEMBLY COMPONENTS.

C A M U N I T, Partial Assembly

(See Figs. 6, 7 and 8)

<i>Index Letter</i>	<i>Part No.</i>	<i>Part Name</i>
<i>BASE CASTING AND ASSOCIATE PARTS (See Figs. 6 and 7).</i>		
EA	3750/190	Cam Unit Base Casting C.P. <i>comprises machined and enamelled casting with pins driven in, together with the following items:-</i>
	PS. 5032	Special Screw
	PN. 1509-1	Std. 4BA Locknut
		} <i>Fitting Abutment. Not visible.</i>
EA1	PB. 4223	Bush (<i>Bearing for item JP</i>).
EA2	1830/59	Feed lever retaining plate.
EA3	PS. 1717-1	Std. 4BA Screw (<i>For securing item EA2</i>).
EA4	PF. 1092	Felt oil Plug (<i>Fitted inside Traversing Lever Pivot</i>).
EB	2319/143	Abutment Plate
EC	PS. 2061-1	Std. 6BA Screw
ED	PW. 2037	Std. 6BA Spring Washer
EE	3750/42	Finger Lift Lever Retaining Plate
EF	PP. 4216	Spacing Collar
	PW. 5508	Shim (<i>3 max.</i>)
		} <i>For retaining item JP.</i>
EG	PS. 2157-1	Std. 6BA Screw
EH	3750/149	Abutment Plate
	3750/148	Abutment Plate Shim (<i>3 per set</i>)
	PS. 2061-1	Std. 6BA Screw (<i>2 per set</i>) <i>for securing item EH.</i>
		} <i>Fitting abutment for Selector Unit, item B.</i>
<i>BELLCRANK LIFT</i>		
EJ	3750/271	Bellcrank Lifting Lever C.P. <i>comprises:-</i>
EJ1	3750/166	Lever Sub. C.P. <i>includes:-</i>
EJ2	PF. 1092	Felt Lubricating Washer (<i>See Fig. 6</i>).
EJ3	EC. 5008A	Eccentric Stud C.P.
EJ4	1830/34	Bellcrank Lifting Block
EJ5	PS. 1735-1	Std. 4BA Screw (<i>For clamping item EJ3</i>).
EJ6	3750/77	Roller Bearing Plate
EJ7	PS. 2045-1	Std. 6BA Screw (<i>For securing item EJ6</i>).
EK	RL. 1002	Roller
	3750/66	Felt Lubricating Plug (<i>Inside item EJ1, for lubricating item EK</i>). <i>Not visible.</i>
<i>RETENTION LEVER (Print and Feed Cam) See Figs. 6 and 7</i>		
EL	2845/132A	Retention Lever Bracket C.P. <i>comprises:-</i>
EM	2845/116A	Retention Lever Bracket.
EN	EC. 1512	Eccentric pivot (<i>for Retention Lever</i>).
EO	PW. 1009-1	Std. 4BA Washer
EP	PW. 2025	Std. 4BA Spring Washer
EQ	PN. 1009-1	Std. 4BA Nut
		} <i>For securing item EN, see Fig. 6.</i>
ER	2845/110A	Retention Lever C.P. <i>comprises:-</i>
ER1	2845/115A	Retention Lever Sub. C.P.
ER2	RL. 1058	Roller
ER3	2845/111	Roller Clip
ER4	PS. 2462-1	Std. 8BA Screw
ER5	PW. 1017-1	Std. 8BA Washer (<i>2 per set</i>)
ER6	PN. 1517-1	Std. 8BA Locknut
		} <i>For securing item ER3.</i>
ER7	2845/169	Oil Pad Holder
	2845/168	Felt Lubricating Pad (<i>2 per set</i>). <i>Not visible.</i>
		<i>For item ER7.</i>
ER8	PW. 2050	Std. 8BA Spring Washer
ER9	PN. 1017-1	Std. 8BA Nut
		} <i>For securing item ER7. See Fig. 6.</i>
ES	CS. 1027	Set Collar and Screw. <i>For securing item ER to item EN.</i>
ET	PS. 1704-1	Std. 4BA Screw
EU	PW. 1009-1	Std. 4BA Washer
		} <i>For securing item EL to item EA.</i>
EV	PG. 7363	Retention Lever Spring.

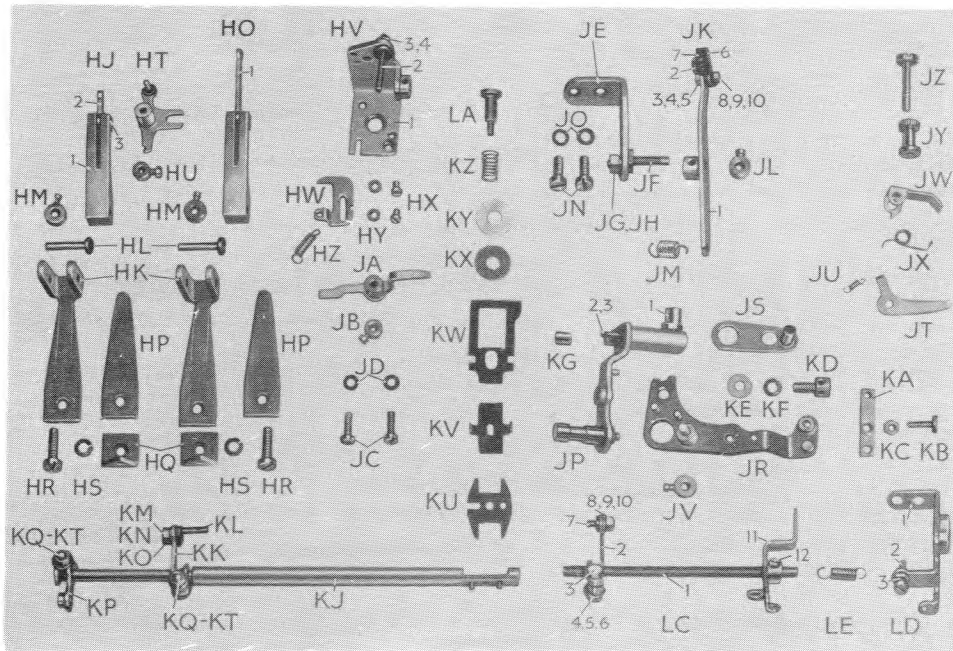


FIG. 8. PARTIAL ASSEMBLY COMPONENTS.

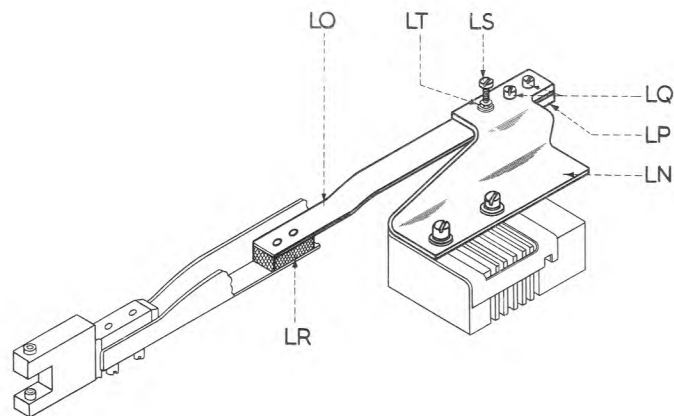


FIG. 8A. FRICTION DAMPING DEVICE.

CAM UNIT, Partial Assembly (Contd.)

Index Letter	Part No.	Part Name
TYPEHAMMER LEVER (See Figs. 6 and 7)		
EW	3750/269	Typehammer Lever C.P. <i>comprises:-</i>
EW1	3750/168	Typehammer Lever Sub C.P. <i>includes:-</i>
	PF.1092	Felt Lubricating Plug } <i>Inside item EW1 for lubricating Roller</i>
	PF.1052	Felt Lubricating Plug } <i>Pivot and Pivot for item EW.</i>
EW2	3750/74	Roller Bearing Plate
EW3	PS.2057-1	Std. 6BA Screw } <i>For securing item EW2.</i>
EW4	PW.2037	Std. 6BA Spring Washer }
EW5	CS.1101	Set Collar and Screw (<i>For retaining Typehammer Link to item EW</i>).
EW6	RL.1008	Cam roller (<i>For item EW</i>).
EW7	PB.4214	Spacing Collar (<i>On pivot for EW, between lever and Cam Unit Base</i>).
FEED LEVER LINK AND ASSOCIATE PARTS (See Figs: 6 and 7)		
EX	3750/270	Traversing Lever C.P. <i>comprises:-</i>
EX1	3750/167	Traversing Lever Sub. C.P. <i>includes:-</i>
	PF.1092	Felt Lubricating Plug (<i>For lubricating item EY</i>). <i>Not visible.</i>
EX2	3750/77	Roller Bearing Plate
EX3	PS.2061-1	Std. 6BA Screw (<i>For securing item EX2</i>).
EX4	PW.5622	Felt Lubricating Washer (<i>6 per set, see Fig. 6</i>) on pivot for item EX.
EY	RL.1002	Cam Roller (<i>For item EX</i>).
EZ	PP.7857	Traversing Lever Pin.
FA	PS.2061-1	Std. 6BA Screw (<i>For clamping item EX to item EZ</i>).
	3750/245A	Traversing Link C.P. <i>comprises:-</i>
FB	3750/183*	Traversing Link Sub. C.P. <i>comprises:-</i>
FB1	3750/59	Traversing Link.
FB2	3750/106	Traversing Lever Bearing.
FB3	CT.102 ($\frac{3}{16}$ ")	Oil impregnated Bush ($\frac{3}{16}$ " long) } <i>Quote length when</i>
FB4	CT.102 ($\frac{3}{16}$ ")	Oil impregnated Bush ($\frac{3}{16}$ " long) } <i>ordering.</i>
FB5	PS.2109-1	Std. 6BA Screw } <i>2 of each per set for</i>
FB6	PW.1013-1	Std. 6BA Washer } <i>securing item FB2 to item</i>
FB7	PW.2037	Std. 6BA Spring Washer } <i>FB1.</i>
FB8	3750/58	Feed Lever Bearing
FB9	CT.95 ($\frac{3}{32}$ ")	Oil impregnated Bush ($\frac{3}{32}$ " long).
FB10	PS.2141-1	Std. 6BA Screw } <i>For securing item</i>
FB11	PS.2093-1	Std. 6BA Screw } <i>FB8 to item</i>
FB12	PW.2037	Std. 6BA Spring Washer (<i>2 per set</i>) } <i>FB1.</i>
FC	PS.7063	Special Screw (<i>Stop for item FF</i>).
FD	PW.2037	Std. 6BA Spring Washer } <i>For securing item FC to item</i>
FE	PN.1013-1	Std. 6BA Nut } <i>FB1 (See Fig.6).</i>
FF	1830/74	Resetting Bellcrank
FG	PB.1135	Collar
FH	PW.1013-1	Std. 6BA Washer } <i>For securing item FF to item FB8.</i>
FJ	PW.2037	Std. 6BA Spring Washer }
FK	PN.1513-1	Std. 6BA Locknut }
FL	PG.7100	Tension Spring (<i>For item FF</i>).
EXTRA PARTS FOR TWO-COLOUR PRINTING (See Figs. 6 and 7)		
FM	3750/363	Operating Roller C.P. <i>comprises:-</i>
FN	3750/352	Pivot Lever C.P.
FO	RL.1151	Roller
FP	PW.1013-	Std. 6BA Washer } <i>For securing item FO.</i>
FQ	PW.2037	Std. 6BA Spring Washer }
FR	PN.1013-1	Std. 6BA Nut }

* The following parts are fitted to the Traversing Link (*item FB*) when the No.7 Teleprinter is equipped with Reperforator Attachment:-

PP.5568	Threaded Pin	}	<i>For clamping item PP.5568.</i>
PW.1013-1	Std. 6BA Washer		
PW.2037	Std. 6BA Spring Washer		
PN.1013-1	Std. 6BA Nut		

NOTE

Items FB2 and FB8 should be ordered only if customer is prepared to drill and ream the bearing holes. Item FB is recommended in place of items FB2 or FB8.

CAM UNIT Partial Assembly (Contd.)

Index Letter	Part No.	Part Name
<i>EXTRA PARTS FOR TWO-COLOUR PRINTING (See Figs. 6 and 7) (contd.)</i>		
FS	3750/353	Pivot Arm C.P.
FT	CS.1041	Set Collar and Screw (For retaining item FN to item FS).
FU	3750/354	Latch
FV	PS.2077-1	Std. 6BA Screw
FW	PW.2037	Std. 6BA Spring Washer
FX	PP.8863	Threaded Pin.
FY	PS.2173-1	Std. 6BA Screw
FZ	PW.2037	Std. 6BA Spring Washer
GA	PN.1013-1	Std. 6BA Nut
GB	PG.7066	Tension Spring
GC	3750/301	Spring Anchor C.P.
<i>FEED LEVER (For Nos. 7 and 8 only). See Figs. 6 and 7.</i>		
GD	3750/273	Feed Lever C.P. comprises:-
GD1	3750/178	Feed Lever Sub. C.P. includes:-
GD2	1830/30A	Trunnion
GD3	1830/107	Oil Pot C.P.
GD4	EC.1555	Eccentric
GD5	PS.1725-1	Std. 4BA Screw (For clamping item GD4).
GE	PS.5106	Special Screw
	PN.1509-1	Std. 4BA Lock Nut (Not visible).
GF	PS.7062	Special Screw
GG	PW.5080	Special Washer
GH	PW.2026	Std. 4BA Spring Washer
<i>CAM ASSEMBLY. (PRINT AND FEED, BELLCRANK AND FINGER LIFT). See Figs. 6 and 7.</i>		
GJ	3750/215	Cam Assembly comprises Pilot Cam items DG, DJ, DK shown in Figs. 4 and 5, together with:-
	3750/182	Cam Shaft front and rear Bearings C.P. comprises:-
GK	3750/351	Front Bearing C.P.
GL	3750/172	Rear Bearing C.P.
	3750/308	Camshaft and Gear C.P. comprises:-
GM	3750/251	Cam Spindle C.P.
GN	GR.2122A	Spiral Gear (65 teeth).
GO	PS.6098	Special Screw (3 per set). For securing item GN to item GM.
GP	1160/786	Shock Absorber Spring
GQ	3750/235	Ratchet C.P. (Front).
	PW.5493	Shim Washer, .015" thick
	PW.5494	Shim Washer, .010" thick
GR	1830/82	Thrust Washer.
GS	3750/185	Print and Feed Cam C.P. comprises:-
GS1	3750/184	Cam Sub C.P.
GS2	3750/370	Pawls and Spacers C.P. (1 set).
	PP.7547	Shouldered pin (Pawl Pivot Pin). Not visible.
GS3	PG.3027B	Pawl Spring C.P.
GT	3750/170	Thrust Plate C.P.
GU	PW.5586	Shim Washer, .005" thick (Quantity as required).
GV	3750/130	Ratchet C.P. (Rear).
GW	1160/786	Shock Absorber Spring.
GX	3750/95	Cam Driving Sleeve
GY	PP.6789	Parallel Pin (For securing item GX to item GM).
GZ	3750/187	Bellcrank and Finger Lift Cam C.P. comprises:-
GZ1	3750/186	Cam Sub C.P.
GZ2	3750/370	Pawls and Spacers C.P. (1 set).
	PP.7547	Shouldered Pin (Pawl Pivot Pin). Not visible.
GZ3	PG.3027B	Pawl Spring C.P.
	PW.5588	Special Washer, .031" thick (Pressed in end of item GZ). Not visible.
HA	3750/173	Spacing Collar C.P.
HB	PS.7064	Special Screw (For securing item HA).

CAM UNIT, Partial Assembly (Contd.)

*Index
Letter*

Part No.

Part Name

CAM ASSEMBLY. (PRINT AND FEED, BELLCRANK AND FINGER LIFT). (Contd.). See Figs. 6 and 7.

HC	3750/169	Selector Driving Gear C.P. comprises:-	
	3750/311	Driving Gear Sub. C.P. comprises:-	
HC1	GR.2170A	Gear (28 teeth).	
HC2	3750/49	Gear Boss	
HC3	PS.2079-1	Std. 6BA Screw (2 per set) for securing item HC1 to item HC2.	
HD	3750/369	Gear Driving Collar C.P. comprises:-	
HD1	3750/55	Collar	} For clamping item HD1.
HD2	PS.2157-1	Std. 6BA Screw	
HD3	PW.2037	Std. 6BA Spring Washer	
HE	PS.2109-1	Std. 6BA Screw (For securing item HD to item HC).	
HF	PS.1777-1	Std. 4 BA Screw	} 2 of each per set. For securing item GJ to item EA.
HG	PS.1793-1*	Std. 4BA Screw	

CAM DETENTS (PRINT AND FEED, BELLCRANK AND FINGER LIFT). See Figs. 6 and 8.

HH	3750/281	Print and Feed Cam Detent C.P. comprises:-	
HJ	3750/188	Cam Detent Sub. C.P. comprises:-	
HJ1	3750/222	Detent Lever	
HJ2	3750/48	Detent Link	
HJ3	PP.1094	Parallel Pin (Pivot for item HJ2).	
HK	3750/94	Detent Mounting Spring.	
HL	PP.7858	Detent Pivot.	
HM	CS.1056	Set Collar and Screw.	
HN	3750/282	Bellcrank and Finger Lift Cam Detent C.P. comprises items HK, HL, HM and:	
HO	3750/189	Cam Detent Sub. C.P. comprises items HJ1, HJ3 and:-	
HO1	3750/82	Detent Link	
HP	3750/38	Detent Spring Backing Plate	} 2 of each for items HH and HN.
HQ	3750/43	Clamp Plate	
HR	PS.1717-1	Std. 4 BA Screw	
HS	PW.2026	Std. 4BA Spring Washer	

PRINT AND FEED DETENT BELLCRANK (See Figs. 6 and 8).

HT	3750/191	Detent Bellcrank C.P.
HU	CS1103	Set Collar and Screw.

DETENT ROCKER LEVER ASSEMBLY

HV	3750/284	Detent Rocker Lever C.P. comprises:-	
HV1	3750/176	Rocker Lever Bracket C.P.	
HV2	PP.8878	Rocker Lever Pivot	
HV3	PW.1013-1	Std. 6BA Washer	} For securing item HV2.
HV4	PN.1513-1	Std. 6BA Locknut	
HW	3750/45	Detent Bellcrank Stop	
HX	PS.2430-1	Std. 8BA Screw	} 2 of each per set for securing item HW to item HV.
HY	PW.1017-1	Std. 8BA Washer	
HZ	PG.7168	Tension Spring (for item HT).	
JA	3750/175	Rocker Lever C.P.	
JB	CS.1015	Set Collar and Screw (for retaining item JA).	
JC	PS.2093-1	Std. 6BA Screw	} 2 of each per set for securing item HV.
JD	PW.2037	Std. 6BA Spring Washer	

RETENTION LEVER (BELLCRANK AND FINGER LIFT CAM). See Figs. 6 and 8.

	3750/283	Retention Lever Bracket C.P. comprises:-	
JE	3750/86	Retention Lever Bracket	
JF	EC.1544	Retention Lever Eccentric	
JG	PW.2026	Std. 4BA Spring Washer	} For securing item JF.
JH	PN.1009-1	Std. 4BA Nut	
JK	3750/212	Retention Lever C.P. comprises:-	
JK1	3750/171	Retention Lever Sub. C.P.	
JK2	RL.1058	Roller	
	2845/111	Roller Clip (Not visible).	

* replaced by PP.8879 Threaded Pin when No.7 Teleprinter is equipped with Reperforator Attachment.

C A M U N I T Partial Assembly (Contd.)

<i>Index Letter</i>	<i>Part No.</i>	<i>Part Name</i>	
RETENTION LEVER (BELLCRANK AND FINGER LIFT CAM). (Contd.). See Figs. 6 and 8.			
JK3	PS. 2477-1	Std. 8BA Screw	}
JK4	PW. 1017-1	Std. 8BA Washer (2 per set)	
JK5	PN. 1517-1	Std. 8BA Locknut	
JK6	2845/169	Oil Pad Holder	}
JK7	2845/168	Oiling Pad (2 per set).	
JK8	PW. 1017-1	Std. 8BA Washer	}
JK9	PW. 2050	Std. 8BA Spring Washer	
JK10	PN. 1017-1	Std. 8BA Nut	
JL	CS. 1027	Set Collar and Screw (For retaining item JK on JE).	
JM	PG. 7372	Tension Spring (for item JK).	
JN	PS. 1717-1	Std. 4BA Screw	}
JO	PW. 2026	Std. 4BA Spring Washer	
FINGER LIFT AND RIBBON DRIVE (See Figs. 6 and 8).			
	3750/237	Finger Lift Lever C.P. comprises:-	
JP	3750/306	Finger Lift Lever Sub. C.P. includes:-	
JP1	1830/107	Oil Pot C.P.	
JP2	3750/150	Roller Pressure Plate.	
JP3	PS. 2061-1	Std. 6BA Screw (For securing item JP2).	
JQ	3750/307	Finger Lift Lever Extension C.P. comprises:-	
JR	3750/177	Finger Lift Extension Sub. C.P.	
JS	3750/362	Mounting Plate C.P.	
JT	3750/360	Latch	
JU	PG. 7134	Tension Spring	
JV	CS. 1025	Set Collar and Screw (For securing item JT).	
JW	3750/359	Ribbon Feed Pawl	
JX	PG. 3143	Torsion Spring	
JY	EC. 1556	Eccentric	
JZ	PS. 7070	Special Screw	
KA	3750/26	Finger Lifting Link	
KB	PS. 5611	Special Screw (Pivot for item KA).	
KC	PN. 1513-1	Std. 6BA Lock Nut	
KD	PS. 1707-1	Std. 4BA Screw	
KE	PW. 1009-1	Std. 4BA Washer	
KF	PW. 2026	Std. 4BA Spring Washer	
KG	RL. 1008	Cam Roller	
ROCKSHAFT AND MAGNET LINK (See Figs. 6 and 8).			
KH	3750/278A	Rockshaft C.P. comprises:-	
KJ	3750/312	Rockshaft Sub. C.P.	
KK	3750/118	Armature Link Lever	
KL	EC. 1546	Eccentric Pivot	
KM	PW. 1013-1	Std. 6BA Washer	
KN	PW. 2037	Std. 6BA Spring Washer	
KO	PN. 1013-1	Std. 6BA Nut	
KP	3750/223	Pilot Detent Link Lever C.P.	
KQ	PS. 2137-1	Std. 6BA Screw	
KR	PW. 1013-1	Std. 6BA Washer (2 per set).	
KS	PW. 2037	Std. 6BA Spring Washer	
KT	PN. 1013-1	Std. 6BA Nut	
KU	3750/310	Guide Plate	
KV	3750/309A	Backing Plate	
KW	3750/120A	Rocker Blade	
KX	PF. 1097	Lubricating Washer (Billiard Cloth).	
KY	PW. 5609	Special Washer	
KZ	PG. 5097B	Compression Spring	
LA	PS. 5620A	Special Screw	
LB	PF. 1095	Lubricating Washer (One at end of item KH).	

CAM UNIT, Partial Assembly (Contd.)

<i>Index Letter</i>	<i>Part No.</i>	<i>Part Name</i>		
DETENT TRIP SHAFT (See Figs. 6 and 8)				
LC	3750/279	Detent Trip Shaft C.P. comprises:-		
LC1	3750/81	Trip Shaft		
LC2	3750/80	Link Operating Lever		
LC3	PS.2137-1	Std. 6BA Screw	}	
LC4	PW.1013-1	Std. 6BA Washer (2 per set).		} For clamping item LC2 to item LC1.
LC5	PW.2037	Std. 6BA Spring Washer		
LC6	PN.1013-1	Std. 6BA Nut		
LC7	PP.8858	Link Pivot	}	
LC8	PW.1013-1	Std. 6BA Washer		} For securing item LC7 to LC1.
LC9	PW.2037	Std. 6BA Spring Washer		
LC10	PN.1013-1	Std. 6BA Nut		
LC11	3750/157	Trip Cam Lever C.P.		
LC12	PS.2445-1	Std. 8BA Screw (For securing item LC11 to item LC1).		
TRIP SHAFT BRACKET (PART OF SELECTOR UNIT) See Figs. 6 and 8.				
LD	3750/276	Trip Shaft Bracket C.P. comprises:-		
LD1	3750/159	Bracket Sub. C.P.		
LD2	PS.2157-1	Std. 6BA Screw	}	
LD3	PN.1513-1	Std. 6BA Lock Nut		} 2 per set. Not visible. For securing item LD to Selector Unit Casting.
	PS.2061-1	Std. 6BA Screw		
	PW.2037	Std. 6BA Spring Washer		
LE	PG.7100	Tension Spring		
SELECTOR TRIP SHAFT (See Fig. 6)				
LF	3750/275	Selector Trip Shaft C.P. comprises:-		
LF1	3750/83	Trip Shaft		
LF2	3750/158	Selector Detent C.P.	}	
LF3	PW.2050	Std. 8BA Spring Washer		} For securing item LF2 to item LF1.
LF4	PS.2457-1	Std. 8BA Screw		
LG	CS.1044	Set Collar and Screw		
LH	3750/85	Bearing Block (For item LF).		
LJ	PS.1793-1	Std. 4BA Screw	}	
LK	PW.2026	Std. 4BA Spring Washer		} For securing item LH.
ELECTROMAGNET LINK (See Fig. 6)				
LL	3750/154	Armature Link C.P.		
LM	CS.1013	Set Collar and Screw (For retaining item LL to item KL).		
FRICITION DAMPING DEVICE (See Fig. 8A)				
<i>(Forms part of Selector Unit 3750/290, See page 5)</i>				
	3750/378	Friction Damping Assembly comprises:-		
LN	3750/386	Support Bracket C.P. (Secured to Upper Rack 3750/62 item AP page 5 by items AS, AT and AU page 5)		
LO	3750/387	Damper Spring C.P.		
LP	3750/376	Clamp Plate		
LQ	PS.2061-1	Std. 6BA Screw (2 per set) for securing item LO.		
LR	3750/380	Friction pad (Leather)		
LS	PS2093-1	Std. 6BA Screw	}	
LT	PN1513-1	Std. 6BA Locknut		} For adjusting pressure of item LO on Traversing Link item FB1.

N U M E R I C A L I N D E X

<i>Part No.</i>	<i>Part Name</i>	<i>Index Letters</i>	<i>Part No.</i>	<i>Part Name</i>	<i>Index Letters</i>
1160/786	Shock Absorber Spring	{ GP GW	3750/45	Detent Bellcrank Stop	HW
			/48	Detent Link	HJ2
			/49	Gear Boss	HC2
			/55	Collar	HD1
1830/30A	Trunnion.. .. .	GD2	/58	Feed Lever Bearing	FB8
/34	Bellcrank Lifting Block ..	EJ4	/59	Traversing Link	FB1
/59	Feed Lever Retaining Plate	EA2	/61A	Comb Setting Finger Block	
/74	Resetting Bellcrank	FF		C.P.	BB
/82	Thrust washer	GR	/62	Upper Rack	AP
/107	Oil Pot C.P.	{ GD3 JP1	/64	Keep Plate	AQ
			/65	Lubricating Frame	BL1
			/66	Felt Lubricating Plug ..	EK
			/69	Link	AV1
			/70	Link Lever	AW1
2319/143	Abutment Plate	EB	/74	Roller Bearing Plate	EW2
			/77	Roller Bearing Plate	{ EJ6 EX2
			/80	Link Operating Lever	LC2
2845/31	Retaining Plate (Bottom) ..	CN	/81	Trip Shaft	LC1
/32	Adjusting Friction Spring C.P.	CK	/82	Detent Link	HO1
/34	Clutch Pressure Plate	DJ	/83	Trip Shaft	LF1
/37	Orientation Adjusting Block		/85	Bearing Block	LH
	C.P.	CL	/86	Retention Lever Bracket ..	JE
/40	Retaining Plate (Top)	CM	/94	Detent Mounting Spring ..	HK
/42	Guide Support Block	CD	/95	Cam Driving Sleeve	GX
/43	Adjusting Block Guide.. ..	CG	/106	Traversing Lever Bearing ..	FB2
/49	Detent Retaining Plate	DB	/118	Armature Link Lever	KK
/110A	Retention Lever C.P.	ER	/120A	Rocker Blade	KW
/111	Roller Clip	{ ER3 JK2	/130	Ratchet C.P. (Rear)	GV
/115A	Retention Lever Sub C.P. ..	ER1	/141	Chopper Lever	AF
/116A	Retention Lever Bracket	EM	/142	Finger Damper C.P. (Canvas)	BF
/132A	Retention Lever Bracket C.P.	EL	/148	Abutment Plate Shim	EH
/168	Felt Lubricating Pad	{ ER7 JK7	/149	Abutment Plate	EF
/169	Oil pad Holder	{ ER7 JK6	/150	Roller Pressure Plate	JP2
			/151	Cam Sleeve C.P.	BA8
			/154	Armature Link C.P.	LL
			/155	End Plate C.P.	DP
			/156	Detent Link C.P.	DE
			/157	Trip Cam Lever C.P.	LC11
			/158	Selector Detent C.P.	LF2
3750/6	Bearing Bracket	AB	/159	Bracket Sub. C.P... .. .	LD1
/19	Spindle	BA1	/160	Lubricator C.P.	BL
/20	Comb Setting Finger	BE	/161	Code Lever C.P.	AH
/21	Keep Plate	BP	/162	Driving Disc C.P... .. .	BA9
/23	Finger Plunger	BD1	/163	Selector Unit Casting C.P... ..	AA
/24	Finger Pivot	BD2	/165	Finger Block Sub C.P.	BC
/25	Link Pivot	BD1	/166	Lever Sub. C.P.	EJ1
/26	Finger Lifting Link	KA	/167	Traversing Lever Sub. C.P.	EX1
/27A	Front Plate	BJ	/168	Typehammer Lever Sub. C.P.	EW1
/28	Push Rod Rack	BH	/169	Selector Driving Gear C.P... ..	HC
/29	Push Rod	AO	/170	Thrust Plate C.P.	GT
/31	Sequential Lever	AN	/171	Retention Lever Sub. C.P. ..	JK1
/32	Pivot	AA5	/172	Rear Bearing C.P.. .. .	GL
/36	Rack	AL1	/173	Spacing Collar C.P.	HA
/37	Rack Support	AL2	/175	Rocker Lever C.P.	JA
/38	Detent Spring Backing Plate	HP	/176	Rocker Lever Bracket C.P... ..	HV1
/42	Finger Lift Lever Retaining		/177	Finger Lift Extension Sub. C.P.	JR
	Plate	EE	/178	Feed Lever Sub. C.P.	GD1
/43	Clamp Plate	HQ	/180	Gear Cover and Support Plate	DS

NUMERICAL INDEX (Contd.)

<i>Part No.</i>	<i>Part Name</i>	<i>Index Letters</i>	<i>Part No.</i>	<i>Part Name</i>	<i>Index Letters</i>
3750/182	Camshaft Front and Rear		3750/353	Pivot Arm C.P.	FF
	Bearings C.P.	GJ	/354	Latch	FU
/183	Traversing Link Sub. C.P. ..	FB	/358	Support Plate	CB
/184	Cam Sub. C.P.	GS1	/359	Ribbon Feed Pawl	JW
/185	Print and Feed Cam C.P. ..	GS	/360	Latch	JT
/186	Cam Sub. C.P.	GZ1	/362	Mounting Plate C.P. ..	JS
/187	Bellcrank and Finger Lift Cam C.P.	GZ	/363	Operating Roller C.P. ..	FM
/188	Cam Detent Sub C.P.	HJ	/364	Finger Pivot C.P.	BD
/189	Cam Detent Sub. C.P.	HO	/366	Wick	AD1
/190	Cam Unit Base Casting C.P.	EA	/368	Lower Rack C.P.	AL
/191	Detent Bellcrank C.P.	HT	/369	Gear Driving Collar	HD
/193	Pilot Cam	DM	/370	Pawls and Spacer C.P. ..	{ GS2 GZ2
/195	Clutch Body	DK	/375	Shim	BJ
/206	Pilot Cam Detent C.P.	DA	/376	Clamp Plate	LP
/212	Retention Lever C.P.	JK	/378	Friction Damping Assembly	-
/215	Cam Assembly	GJ	/380	Friction Pad	LR
/218	Spacing Pressure Plate C.P. ..	BA6	/386	Support Bracket C.P. ..	LN
/219	Adjusting Plate C.P.	DX	/387	Damper Spring C.P.	LO
/221	Orientation Scale	CE			
/222	Detent Lever	HJ1			
/223	Pilot Detent Link Lever C.P.	KP			
/230	Lubricator	AD	<i>CS NUMBERS (SET COLLARS AND SCREWS)</i>		
/235	Ratchet C.P. (Front)	GQ	CS1013	Set Collar and Screw	{ DF LM
/236	Selector Cam Assembly	BA			
/237	Finger Lift Lever C.P.	JO	CS1015	$\frac{3}{32}$ " Set Collar and Screw ..	JB
/238	Orientation Link	CQ	CS1025	$\frac{1}{8}$ " Set Collar and Screw ..	JV
/242	Orientation Roller Pivot	CR	CS1027	$\frac{1}{8}$ " Set Collar and Screw ..	{ ES JL
/245A	Traversing Link C.P.	FA			
/251	Cam Spindle C.P.	GM			
/267	Resetting Link C.P.	AV			
/268	Resetting Link Lever C.P. ..	AW	CS1041	$\frac{5}{32}$ " Set Collar and Screw ..	FT
/269	Typehammer Lever C.P.	EW	CS1044	$\frac{3}{32}$ " Set Collar and Screw ..	LG
/270	Traversing Lever C.P.	EX	CS1056	$\frac{1}{8}$ " Set Collar and Screw ..	HM
/271	Bellcrank Lifting Lever C.P.	EJ	CS1101	$\frac{3}{32}$ " Set Collar and Screw ..	EW5
/273	Feed Lever C.P.	GD	CS1103	$\frac{3}{32}$ " Set Collar and Screw ..	HU
/274	Release Lever C.P.	CV			
/275	Selector Trip Shaft C.P.	LF			
/276	Trip Shaft Bracket C.P.	LD	<i>EC NUMBERS (ECCENTRICS)</i>		
/278A	Rockshaft C.P.	KH	EC1512	Eccentric Pivot	EN
/279	Detent Trip Shaft C.P.	LC	EC1543	Eccentric Pin	AA4
/280	Adjusting Block Bracket C.P.	CA	EC1544	Retention Lever Eccentric	JF
/281	Print and Feed Cam Detent C.P.	HH	EC1546	Eccentric Pivot	KL
/282	Bellcrank and Finger Lift Cam Detent C.P.	HN	EC1555	Eccentric	GD4
/283	Retention Lever Bracket	JD	EC1556	Eccentric	JY
/284	Detent Rocker Lever C.P. ..	HV	EC5008A	Eccentric Stud	EJ3
/290	Selector Unit	B			
/301	Spring Anchor C.P.	GC	<i>GR NUMBERS (GEARS)</i>		
/306	Finger Lift Lever Sub. C.P. ..	JP	GR2122A	Spiral Gear (65 Teeth) ..	GN
/307	Finger Lift Lever Extension C.P.	JQ	GR2170A	Spiral Gear (28 Teeth) ..	HC1
/308	Cam Shaft and Gear C.P.	GL	GR2171	Spiral Gear (28 Teeth) ..	BA2
/309A	Backing Plate	KV			
/310	Guide Plate	KU	<i>PB NUMBERS (BUSHES)</i>		
/311	Driving Gear Sub. C.P.	HC	PB1135	Collar	FG
/312	Rockshaft Sub. C.P.	KJ	PB1449	Bearing Bush	AA8
/346	Retaining Plate	DG	PB1465	Oil impregnated Bush ..	BA8
/351	Front Bearing C.P.	GK	PB4064	Oil impregnated Bush ..	AA1
/352	Pivot Lever C.P.	FN			

NUMERICAL INDEX (Contd.)

Part No.	Part Name	Index Letters
<i>PB NUMBERS (BUSHES) (Contd.)</i>		
PB4214	Spacing Collar	EW7
PB4223	Bush	EA1

<i>PF NUMBERS (FELT PARTS)</i>		
PF1052	Felt Lubricating Plug	EW1
PF1091	Friction Disc	DL
PF1092	Felt Oil Plug	EA4
		EJ2
		EW1
		EX1
PF1093	Friction Disc	BA7
PF1094	Lubricator Felt	BL2
PF1095	Lubricating Washer	LB
PF1097	Lubricating Washer	KX

<i>PG NUMBERS (SPRINGS)</i>		
PG2120	Comb Setting Finger Spring ..	BG
PG3027B	Pawl Spring C.P.	GS3
		GZ3
PG3143	Torsion Spring	JX
PG5093B	Clutch Spring	BA4
PG5094	Compression Spring	BN
PG5095	Clutch Spring	DN
PG5097B	Compression Spring	KZ
PG7066	Tension Spring	GB
PG7100	Tension Spring	FL
		LE
PG7134	Tension Spring	JU
PG7168	Tension Spring	HZ
PG7209	Tension Spring	AX
PG7227	Tension Spring	CZ
PG7363	Retention Lever Spring	EV
PG7364A	Tension Spring	AG
PG7367	Tension Spring	AJ
PG7372	Tension Spring	JM

<i>PN NUMBERS (NUTS)</i>		
PN1009-1	Std. 4BA Hex. M.S.	AA4, AW5
		EQ, JH
PN1013-1	Std. 6BA Hex. M.S.	AV5, CY, FE
		FR, GA, KO
		KT, LC6, LC10
PN1017-1	Std. 8BA Hex. M.S.	ER9, JK10
PN1505-1	Std. 2BA Hex.Lock M.S.	AA7, AY
PN1509-1	Std. 4BA Hex.Lock M.S.	EA, GE
PN1513-1	Std. 6BA Hex.Lock M.S.	BD4, FK, HV4
		KC, LD3, LT
PN1517-1	Std. 8BA Hex.Lock M.S.	ER6, JK5
PN5079	Pilot Cam Clutch Nut.	
		2BA. M.S.
PN6026	Special Nut 6BA. M.S.	CU

Part No.	Part Name	Index Letters
<i>PP NUMBERS (PINS)</i>		
PP1094	Parallel Pin	HJ3
PP4029	Spring Anchor Pin	AA2
PP4031	Spring Anchor Pin	AA3
PP6776	Driving Pin	BA10
PP6789	Parallel Pin	GY
PP7547	Shouldered Pin	GS2, GZ2
PP7857	Traversing Lever Pin	EZ
PP7858	Detent Pivot.. .. .	HL
PP8858	Link Pivot	AV2, LC7
PP8859	Link Lever Pivot.. .. .	AW2
PP8863	Threaded Pin	FX
PP8878	Rocker Lever Pivot	HV2

<i>PS NUMBERS (SCREWS)</i>		
PS1332-1	Std. 2BA x 1/2" CH.Hd. M.S. ..	C
PS1407-1	Std. 2BA x 1" CH.Hd. M.S. ..	BO
PS1676-1	Std. 4BA x 1/4" CH.Hd. M.S. ..	CD, CJ
PS1678-1	Std. 4BA x 1/4" c/sk.Hd.M.S. ..	CC
PS1687-1	Std. 4BA x 3/16" CH.Hd. M.S. ..	AC
PS1694-1	Std. 4BA x 3/8" CH.Hd. M.S. ..	DQ
PS1704-1	Std. 4BA x 3/8" Cap.Hd.M.S. ..	ET
PS1707-1	Std. 4BA x 3/8" Cap.Hd.M.S. ..	KD
PS1717-1	Std. 4BA x 1/2" CH.Hd.M.S. ..	DV, EA3
		HR, JN
PS1725-1	Std. 4BA x 1/2" Cap.Hd.M.S. ..	GD5
PS1735-1	Std. 4BA x 3/8" Cap.Hd.M.S. ..	EJ5
PS1777-1	Std. 4BA x 7/8" CH.Hd.M.S. ..	HF
PS1793-1	Std. 4BA x 1" CH.Hd. M.S. ..	HG, LJ
PS2045-1	Std. 6BA x 3/8" CH.Hd.M.S. ..	BQ, EJ7
PS2057-1	Std. 6BA x 3/2" CH.Hd.M.S. ..	EW3
PS2061-1	Std. 4BA x 1/4" CH.Hd. M.S. ..	AA5, AE, AL4
		BA3, DC, EC
		EH, EX3, FA
		JP3, LD3, LQ
PS2075-1	Std. 6BA x 3/2" CH.Hd.M.S. ..	DH
PS2077-1	Std. 6BA x 3/8" CH.Hd.M.S. ..	AS, BK, FV
PS2079-1	Std. 6BA x 3/8" c/sk.Hd.M.S. ..	HC3
PS2093-1	Std. 6BA x 3/8" CH.Hd.M.S. ..	CO, FB11,
		JC, LS
PS2109-1	Std. 6BA x 3/8" CH.Hd.M.S. ..	FB5, HE
PS2136-1	Std. 6BA x 1/2" Cap.Hd.M.S. ..	CW
PS2137-1	Std. 6BA x 1/2" Hex.Hd.M.S. ..	AR, KQ, LC3
PS2141-1	Std. 6BA x 3/8" CH.Hd.M.S. ..	FB10
PS2157-1	Std. 6BA x 3/8" CH.Hd.M.S. ..	AM, EG
		HD2, LD2
PS2173-1	Std. 6BA x 3/8" CH.Hd.M.S. ..	FY
PS2430-1	Std. 8BA x 3/8" CH.Hd.M.S. ..	HX
PS2445-1	Std. 8BA x 3/8" CH.Hd.M.S. ..	LC12
PS2457-1	Std. 8BA x 3/2" CH.Hd.M.S. ..	LF4
PS2462-1	Std. 8BA x 1/4" CH.Hd.M.S. ..	ER4
PS2477-1	Std. 8BA x 3/8" CH.Hd.M.S. ..	JK3
PS5032	Special 4BA x 1/2" Shouldered Hd.M.S.	
PS5106	Special 4BA x 3/8" Hex. Hd. M.S. ..	GE
PS5261	Special 4BA x 1/8" CH.Hd.M.S. ..	CH
PS5289	Special 6BA x 1/4" fil.Hd.M.S. ..	CF

NUMERICAL INDEX (Contd.)

<i>Part No.</i>	<i>Part Name</i>	<i>Index Letters</i>
<i>PS NUMBERS (SCREWS) (Contd.)</i>		
PS5367	Special 4BA x $\frac{7}{32}$ " fil.Hd.M.S. ..	DY
PS5610	Special 6BA x $\frac{11}{16}$ " M.S.	BM
PS5611	Link Pivot Screw	KB
PS5620A	Special 6BA x $\frac{11}{16}$ " M.S.	LA
PS5923	Cone Pointed Screw 2BA x $\frac{3}{4}$ " Hex. Hd.M.S.	AA6
PS6098	Special 6BA x $\frac{1}{16}$ " c/sk.Hd.M.S.	GO
PS6893	Special 4BA x $\frac{3}{16}$ " Knurled Hd. M.S.	CP
PS7062	Special 4BA x $\frac{7}{32}$ " fil.Hd.M.S. ..	GF
PS7063	Special 6BA x $\frac{7}{32}$ " CH.Hd.M.S...	FC
PS7064	Special 4BA x $\frac{3}{16}$ " CH.Hd.M.S...	HB
PS7070	Special 6BA x $\frac{11}{16}$ " CH.Hd.M.S...	JZ

<i>PW NUMBERS (WASHERS)</i>		
PW1005-1	Std. 2BA M.S.	D, AZ
PW1009-1	Std. 4BA M.S.	AA4, DW, AW3 EO, EU, KE FB6, FH, FP
PW1013-1	Std. 6BA M.S.	CX, DU, AT AV3, HV3, KM KR, LC4, LC8
PW1017-1	Std. 8BA M.S.	ER5, HY JK4, JK8
PW2025	Std. 4BA Spring Washer	EP
PW2026	Std. 4BA Spring Washer	DR, AA4, AW4 GH, HS, JG JO, KF, LK

<i>Part No.</i>	<i>Part Name</i>	<i>Index Letters</i>
PW2037	Std. 6BA Spring Washer	DD, AA5, AL3 AU, AV4, BD3 BR, ED, EW4 FB12, FD, FJ FQ, FW, FZ HD3, JD, KN KS, LC5, LC9 LD3, FB7
PW2050	Std. 8BA Spring Washer..	ER8, JK9, LF3
PW5080	Packing Washer 4BA x $\frac{3}{4}$ " I.D. ..	GG
PW5190	Special Washer $\frac{7}{16}$ " I.D. M.S. ..	CT
PW5221	Special Washer $\frac{3}{16}$ " I.D. M.S. ..	AK
PW5493	Shim .015"	GQ
PW5494	Shim .010"	GQ
PW5508	Shim .005"	EF
PW5586	Shim .005"	GU
PW5587	Clutch Shim .027 - .029	BA5
PW5588	Special Washer $\frac{11}{16}$ " I.D. C.S. ..	GZ3
PW5609	Special Washer $\frac{11}{16}$ " I.D. M.S. ..	KY
PW5622	Oiling Washer (Felt)	EX4

RL NUMBERS (ROLLERS)

RL1002	Cam Roller	CS, EK, EY
RL1008	Cam Roller	EW6, KG
RL1058	Roller	ER2, JK2
RL1151	Roller	FO

CT95	Oil impregnated Bush $\frac{7}{32}$ " long. I. dia. $\frac{1}{4}$ "	FB9
CT102	Oil impregnated Bush. I. dia. $\frac{1}{8}$ "	FB3, FB4