

Please do not upload this copyright pdf document to any other website. Breach of copyright may result in a criminal conviction.

This pdf document was generated by me Colin Hinson from a Crown copyright document held at R.A.F. Henlow Signals Museum. It is presented here (for free) under the Open Government Licence (O.G.L.) and this pdf version of the document is my copyright (along with the Crown Copyright) in much the same way as a photograph would be.

The document should have been downloaded from my website <https://blunham.com/Radar>, or any mirror site named on that site. If you downloaded it from elsewhere, please let me know (particularly if you were charged for it). You can contact me via my Genuki email page: <https://www.genuki.org.uk/big/eng/YKS/various?recipient=colin>

You may not copy the file for onward transmission of the data nor attempt to make monetary gain by the use of these files. If you want someone else to have a copy of the file, point them at the website. (<https://blunham.com/Radar>). Please do not point them at the file itself as it may move or the site may be updated.

It should be noted that most of the pages are identifiable as having been processed by me.

I put a lot of time into producing these files which is why you are met with this page when you open the file.

In order to generate this file, I need to scan the pages, split the double pages and remove any edge marks such as punch holes, clean up the pages, set the relevant pages to be all the same size and alignment. I then run Omnipage (OCR) to generate the searchable text and then generate the pdf file.

Hopefully after all that, I end up with a presentable file. If you find missing pages, pages in the wrong order, anything else wrong with the file or simply want to make a comment, please drop me a line (see above).

It is my hope that you find the file of use to you personally – I know that I would have liked to have found some of these files years ago – they would have saved me a lot of time !

Colin Hinson

In the village of Blunham, Bedfordshire.

RADAR COVER DIAGRAMS

for

A.M.E.S. TYPES

1, 6MK. 3 & 8, 7, 11MK. 4,

14MK. 6, 15MK. 2, 27

50 SERIES

HQ. NO 90 GROUP,
R. A. F.

FEBRUARY 1950.

RADAR COVER DIAGRAMS
FOR
AIR MINISTRY EXPERIMENTAL STATIONS

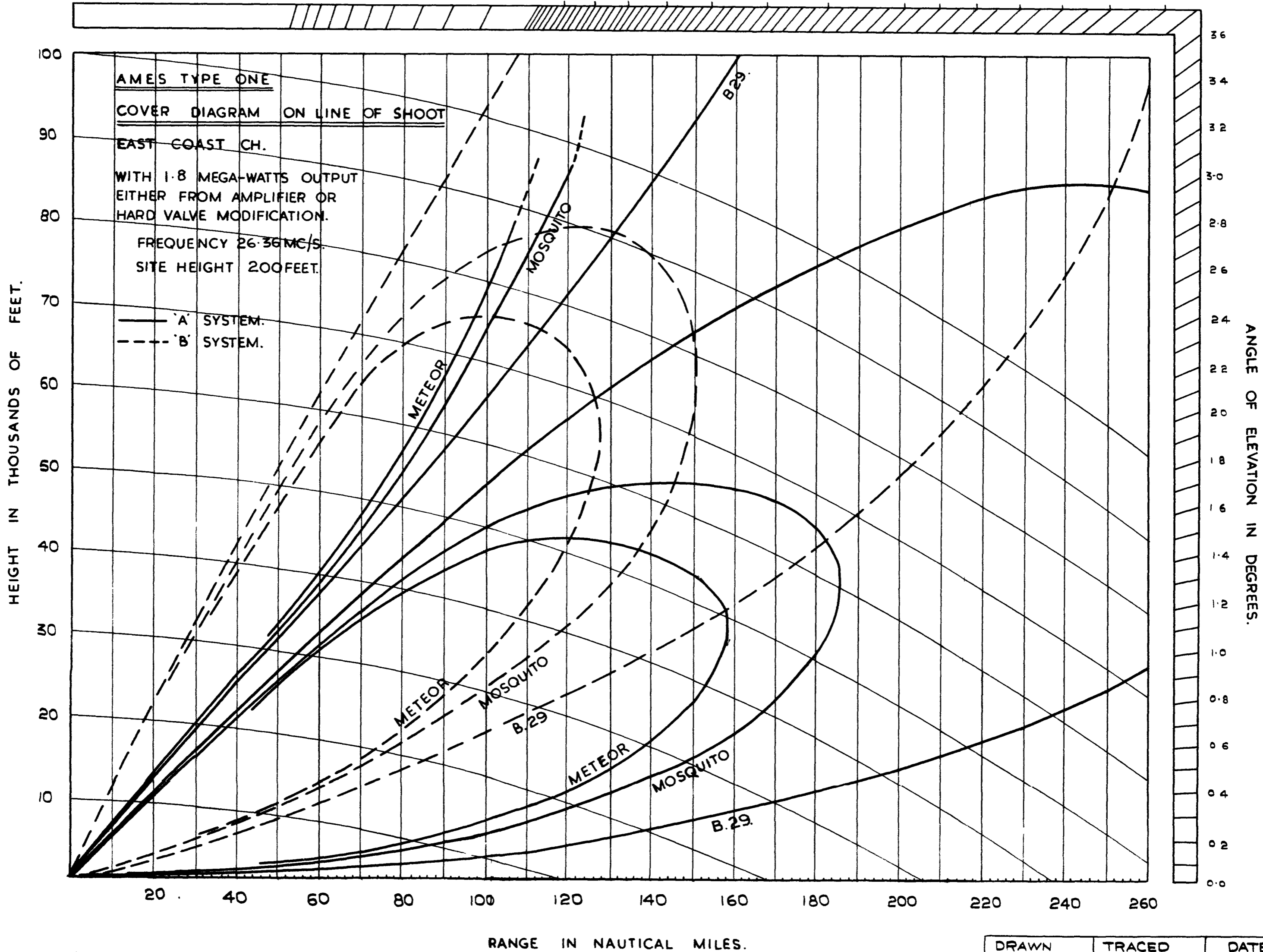
CONTENTS :

- A.M.E.S. Type 1
- A.M.E.S. Type 6 Mk.3
- A.M.E.S. Type 6 Mk.8
- A.M.E.S. Type 7
- A.M.E.S. Type 11 Mk.4
- A.M.E.S. Type 14 Mk.6
- A.M.E.S. Type 15 Mk.2
- A.M.E.S. Type 27
- A.M.E.S. Type 50 series
- A.M.E.S. Type 70 Mk.3 & 4

H.Q. No. 90 Group
R.A.F.

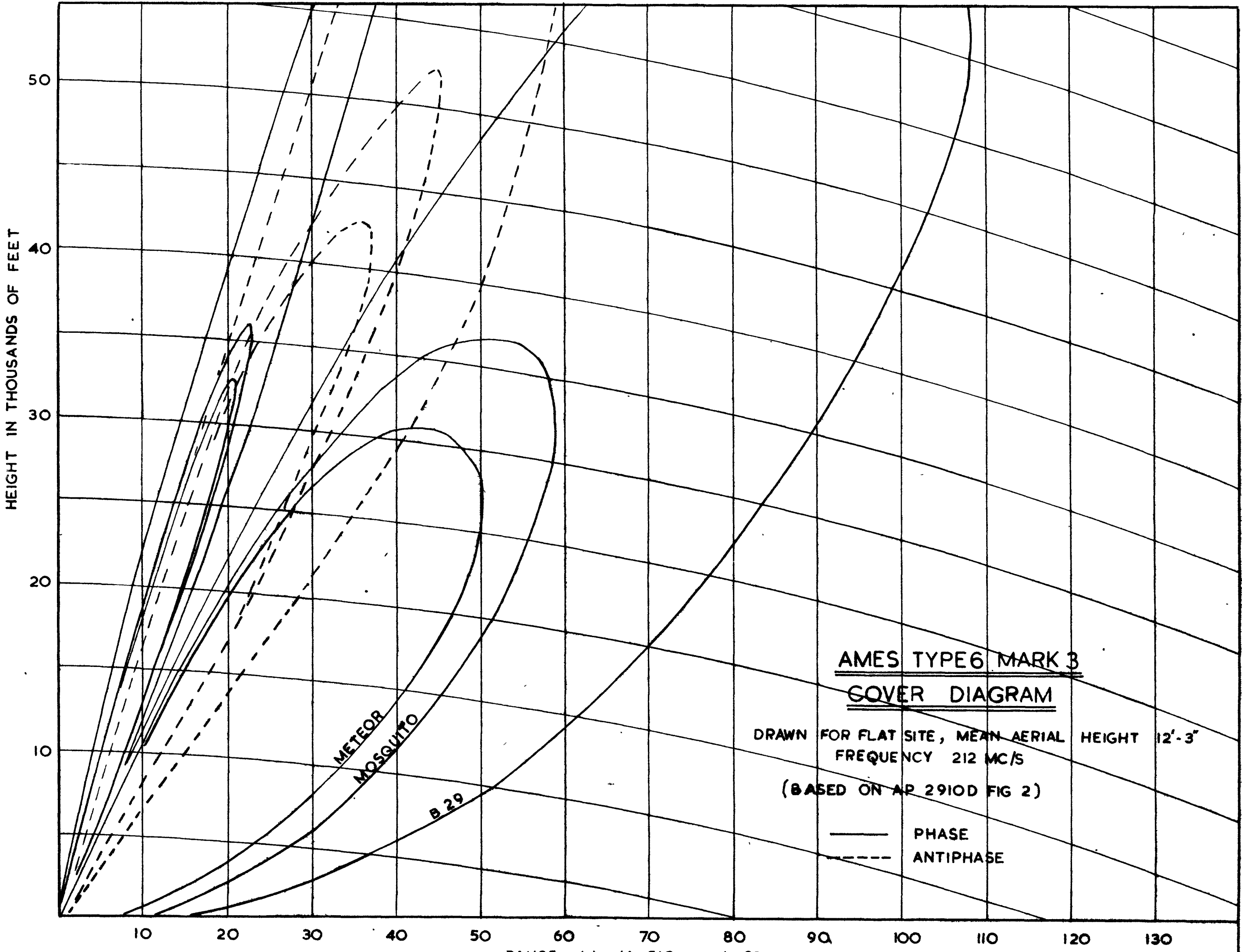
February 1950.

180 160 140 120 100 90 85 80 75 70 65 60 55 50 48 46 44 42 40 38



DRAWING NO CAL/90/65.

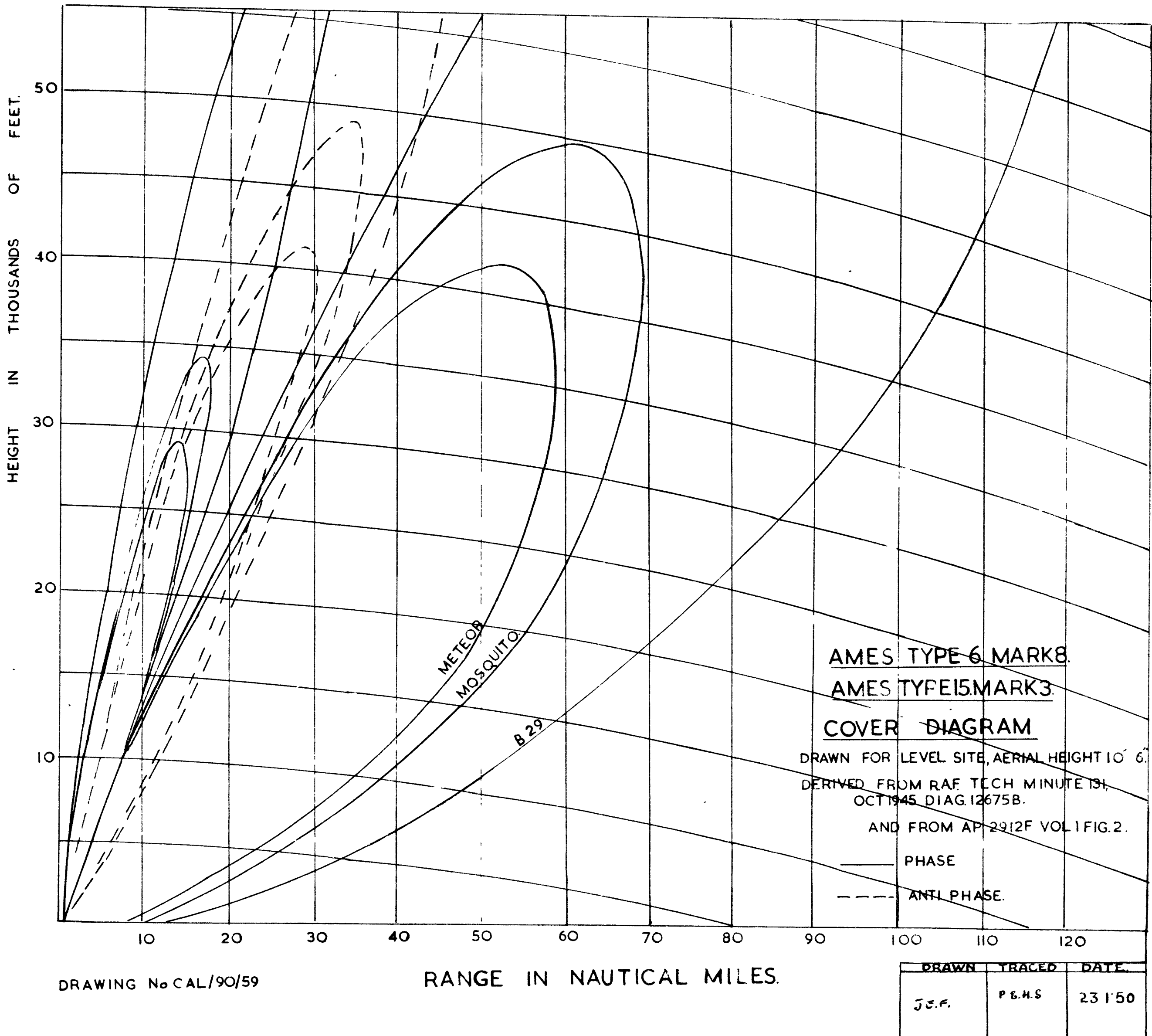
DRAWN	TRACED	DATE
u&lwf _c	<i>[Signature]</i> 4/50	30.1.50



RANGE IN NAUTICAL MILES

DRG No CAL/90/58.

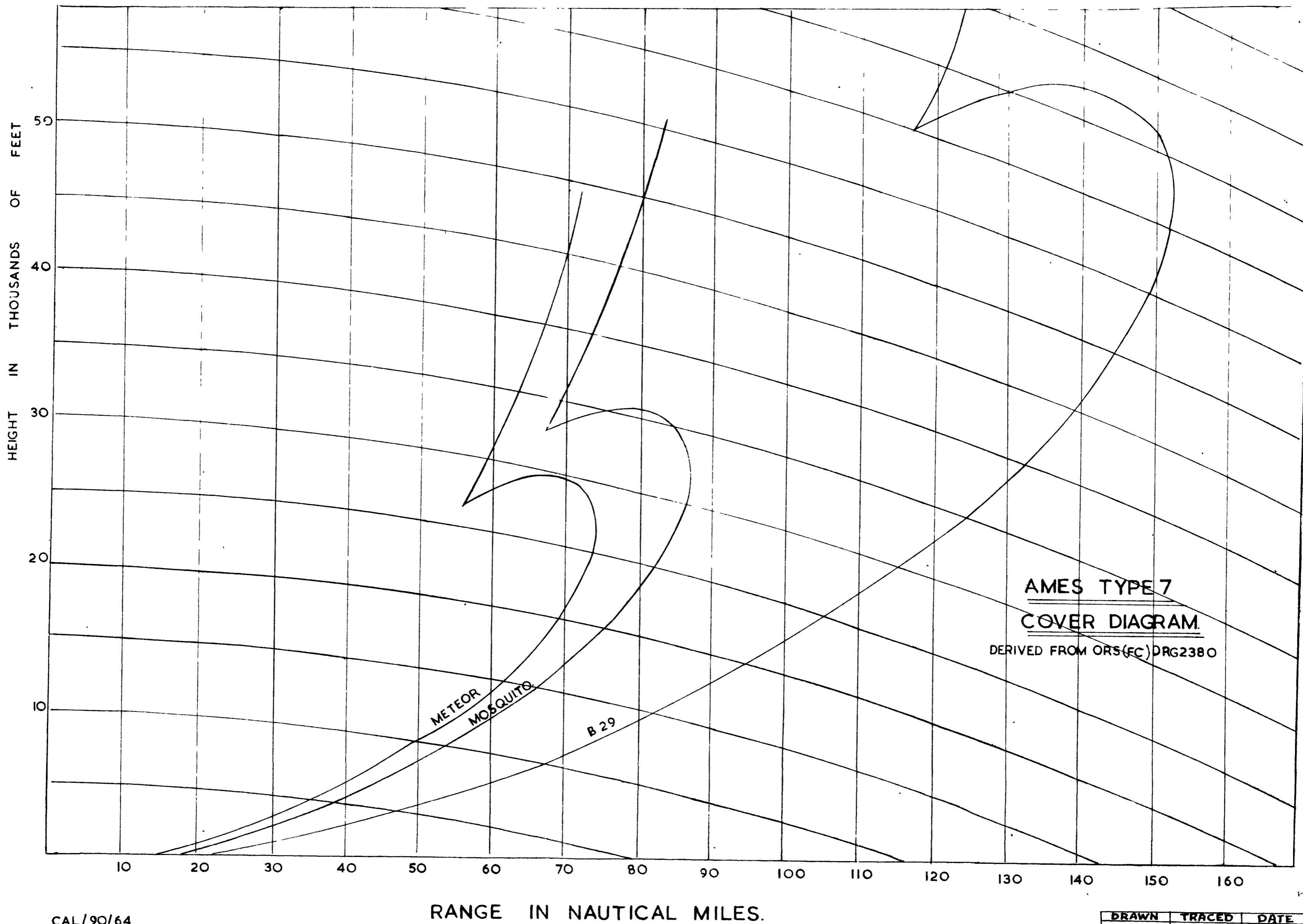
DRAWN	TRACED	DATE
J.E.F.	P.J.N.A.	10/1/50



DRAWING No CAL/90/59

RANGE IN NAUTICAL MILES.

DRAWN	TRACED	DATE
J.E.F.	P.B.H.S	23 1'50

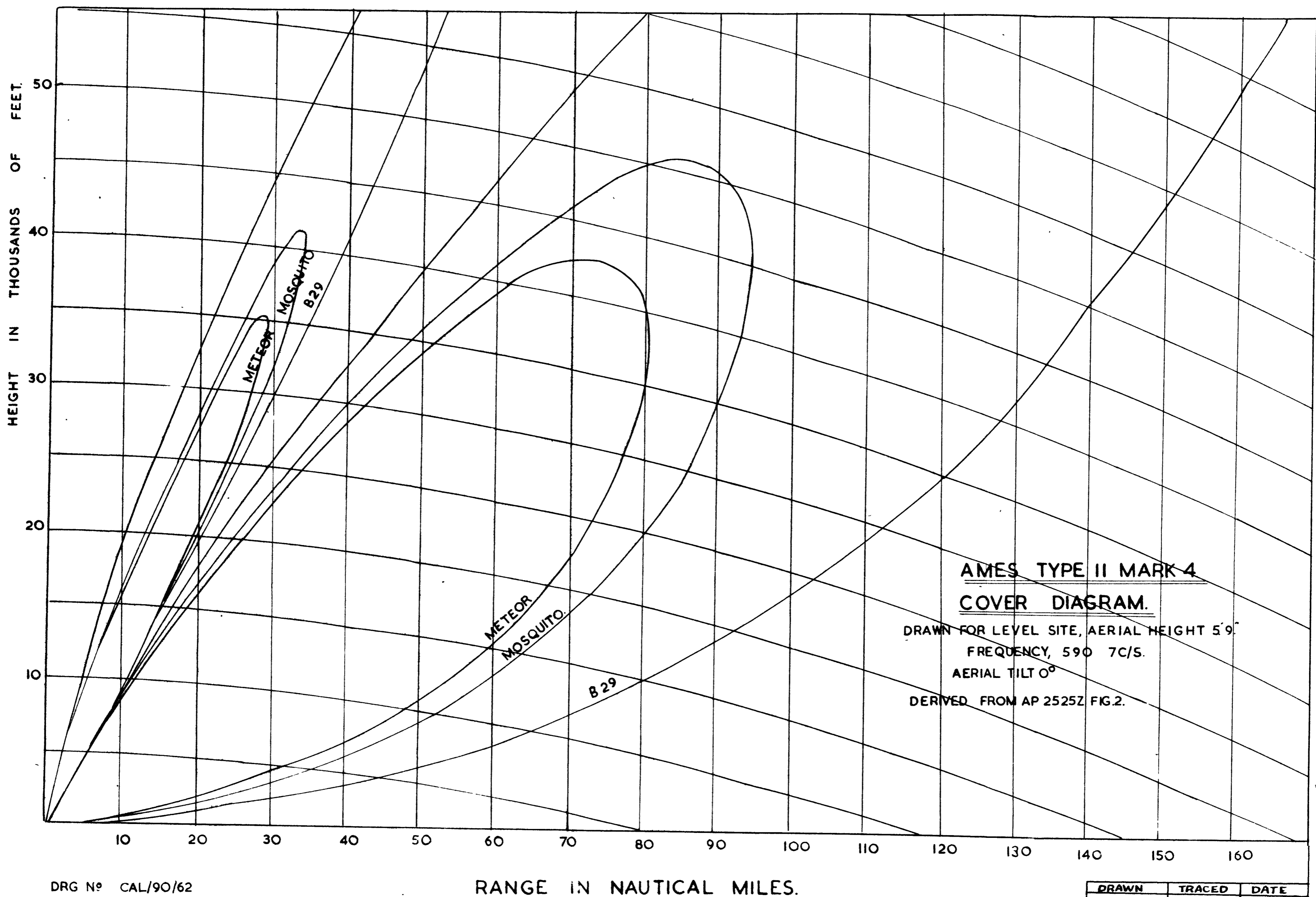


AMES TYPE 7
COVER DIAGRAM
 DERIVED FROM ORS(FC) PRG2380

CAL/90/64

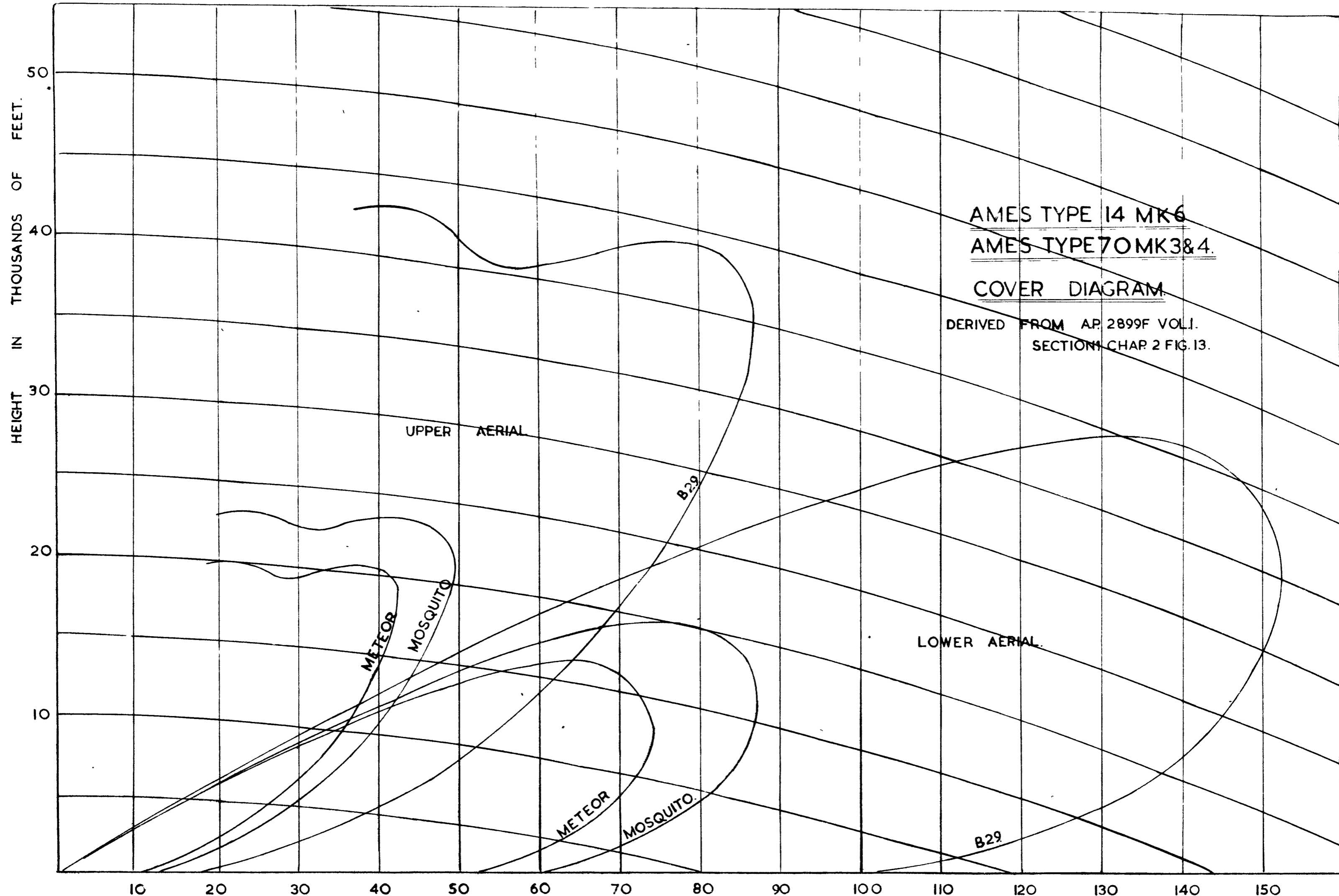
RANGE IN NAUTICAL MILES.

DRAWN	TRACED	DATE
J.E.F.	P.L.S.	27.1.50.



DRG No CAL/90/62

DRAWN	TRACED	DATE
J.E.F.	P.S.H.S.	21/1/50



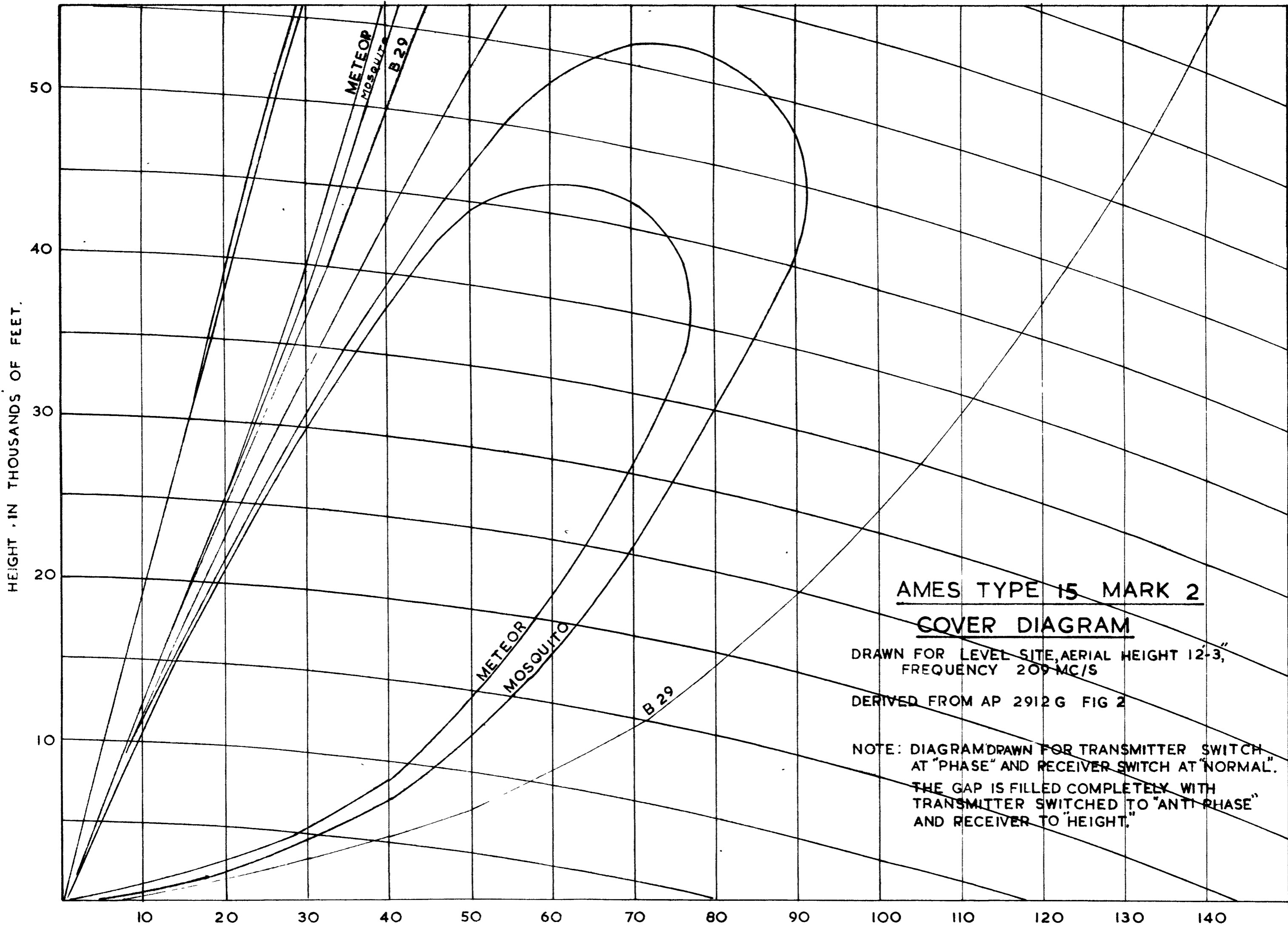
AMES TYPE 14 MK 6
AMES TYPE 70 MK 3&4.
COVER DIAGRAM.

DERIVED FROM AP. 2899F VOL. I.
 SECTION, CHAP 2 FIG. 13.

DRG No CAL/90/63.

RANGE IN NAUTICAL MILES.

DRAWN	TRACED	DATE.
J.E.F.	P.S.M.S.	19:1'50.



AMES TYPE 15 MARK 2

COVER DIAGRAM

DRAWN FOR LEVEL SITE, AERIAL HEIGHT 12'-3",
 FREQUENCY 209 MC/S

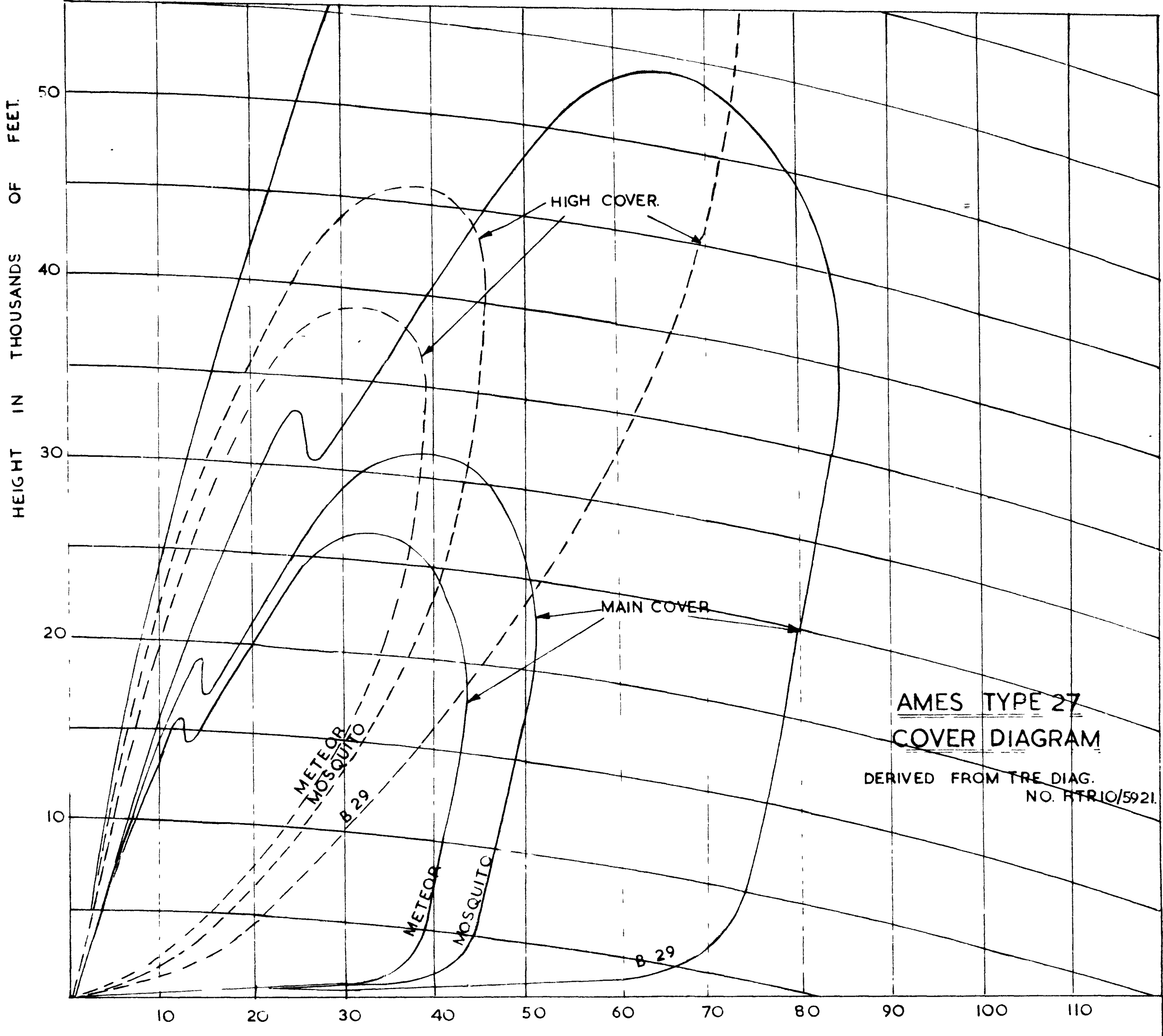
DERIVED FROM AP 2912 G FIG 2

NOTE: DIAGRAM DRAWN FOR TRANSMITTER SWITCH
 AT "PHASE" AND RECEIVER SWITCH AT "NORMAL".
 THE GAP IS FILLED COMPLETELY WITH
 TRANSMITTER SWITCHED TO "ANTI PHASE"
 AND RECEIVER TO "HEIGHT."

RANGE IN NAUTICAL MILES.

DRG No CAL/90/61

DRAWN	TRACED	DATE
J.E.F.	P.J.N.A.	13/1/50



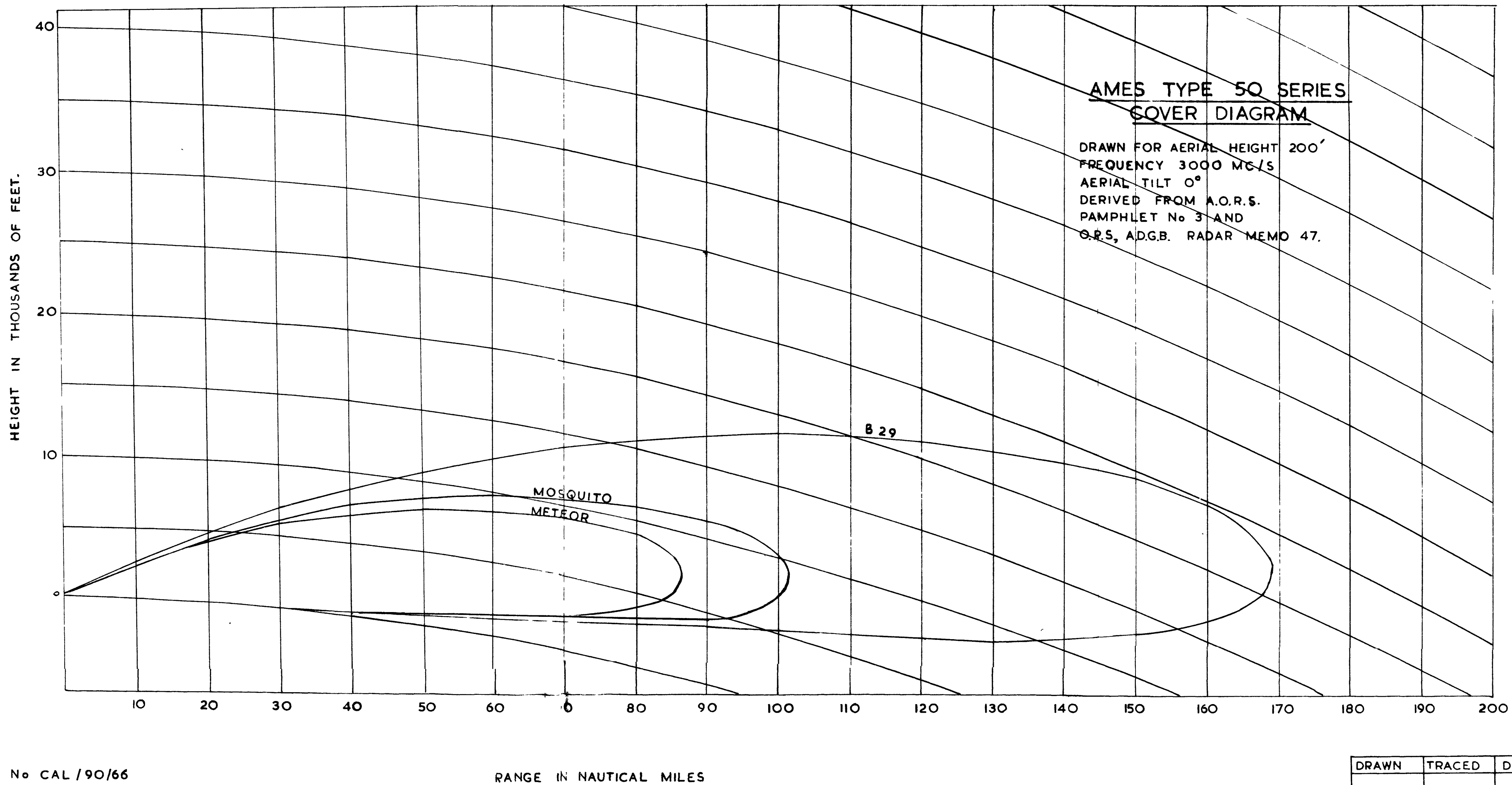
**AMES TYPE 27
COVER DIAGRAM**

DERIVED FROM TRE DIAG.
NO. RTR10/5921.

DRG No. CAL/90/60

RANGE IN NAUTICAL MILES.

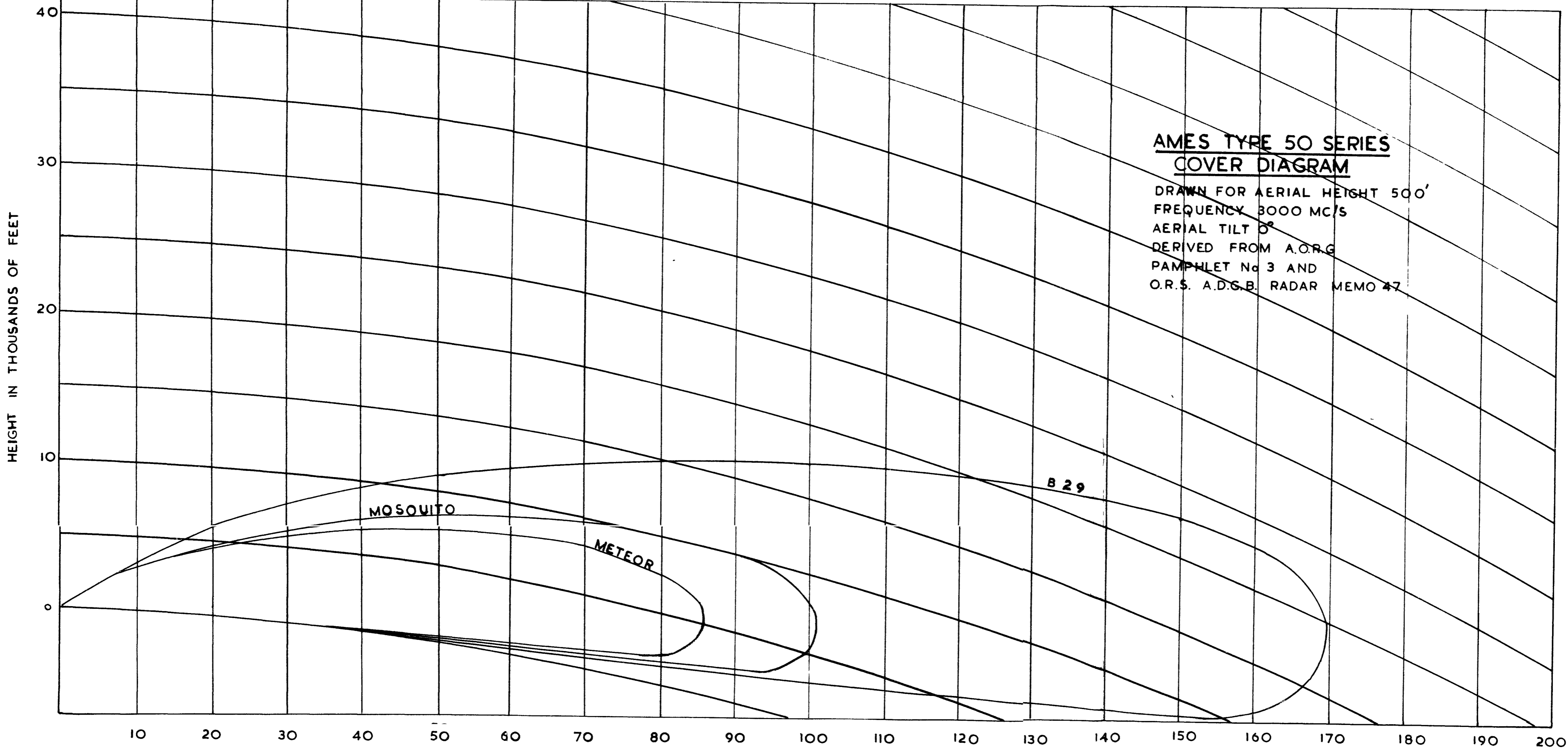
DRAWN	TRACED	DATE
J.E.F.	PLM S.	26'50



DRG No CAL/90/66

RANGE IN NAUTICAL MILES

DRAWN	TRACED	DATE
<i>W. H. P.</i>	P. J. A.	4-2-50



**AMES TYPE 50 SERIES
COVER DIAGRAM**

DRAWN FOR AERIAL HEIGHT 500'
 FREQUENCY 3000 MC/S
 AERIAL TILT 0°
 DERIVED FROM A.O.R.G.
 PAMPHLET No 3 AND
 O.R.S. A.D.G.B. RADAR MEMO 47

DRG No CAL/90/67

RANGE IN NAUTICAL MILES

DRAWN	TRACED	DATE
<i>W. H. G.</i>	P. J. A.	4-2-50