

Please do not upload this copyright pdf document to any other website. Breach of copyright may result in a criminal conviction.

This Acrobat document was generated by me, Colin Hinson, from a document held by me. It is presented here (for free) and this pdf version of the document is my copyright in much the same way as a photograph would be. If you believe the document to be under other copyright, please contact me. The Teletype Corporation, originally part of Western Electrics, ceased in 1990, whilst part of AT&T.

The document should have been downloaded from my website <https://blunham.com/Radar>, or any mirror site named on that site. If you downloaded it from elsewhere, please let me know (particularly if you were charged for it). You can contact me via my Genuki email page: <https://www.genuki.org.uk/big/eng/YKS/various?recipient=colin>

You may not copy the file for onward transmission of the data nor attempt to make monetary gain by the use of these files. If you want someone else to have a copy of the file, point them at the website. (<https://blunham.com/Radar>). Please do not point them at the file itself as it may move or the site may be updated.

It should be noted that most of the pages are identifiable as having been processed by me.

I put a lot of time into producing these files which is why you are met with this page when you open the file.

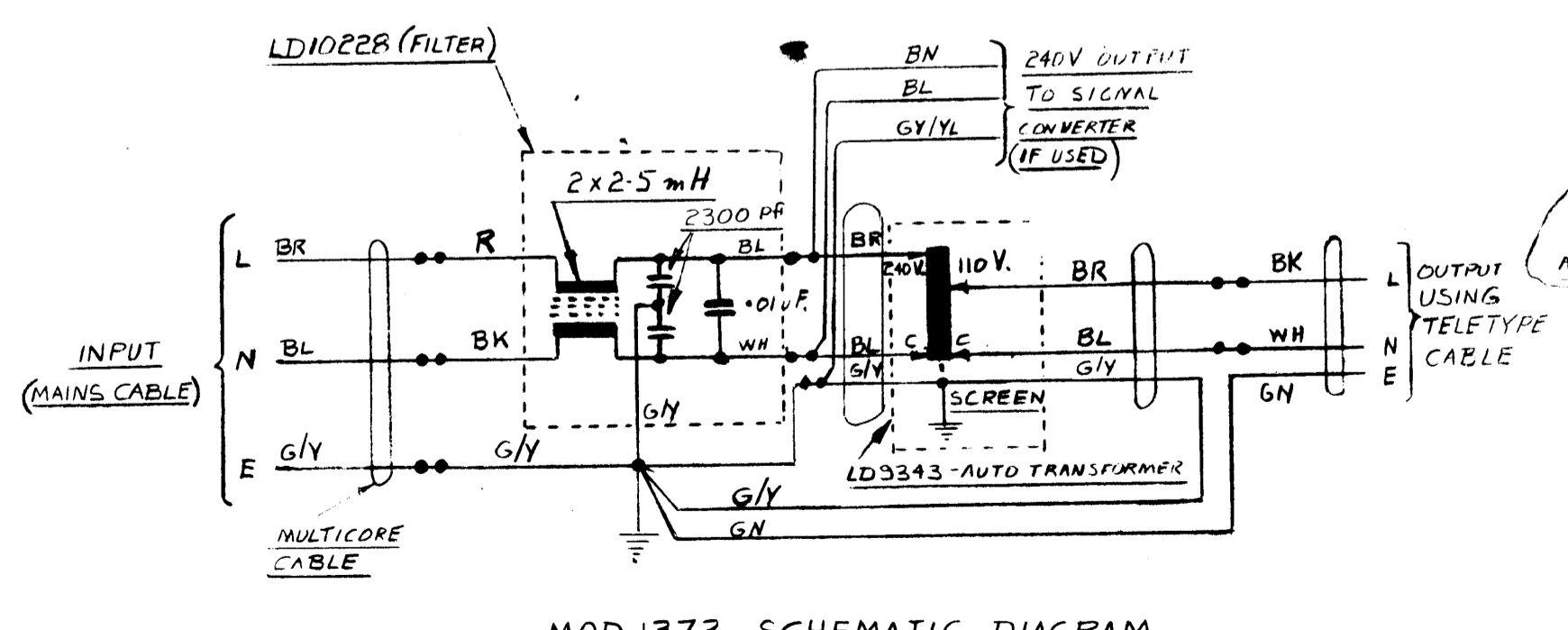
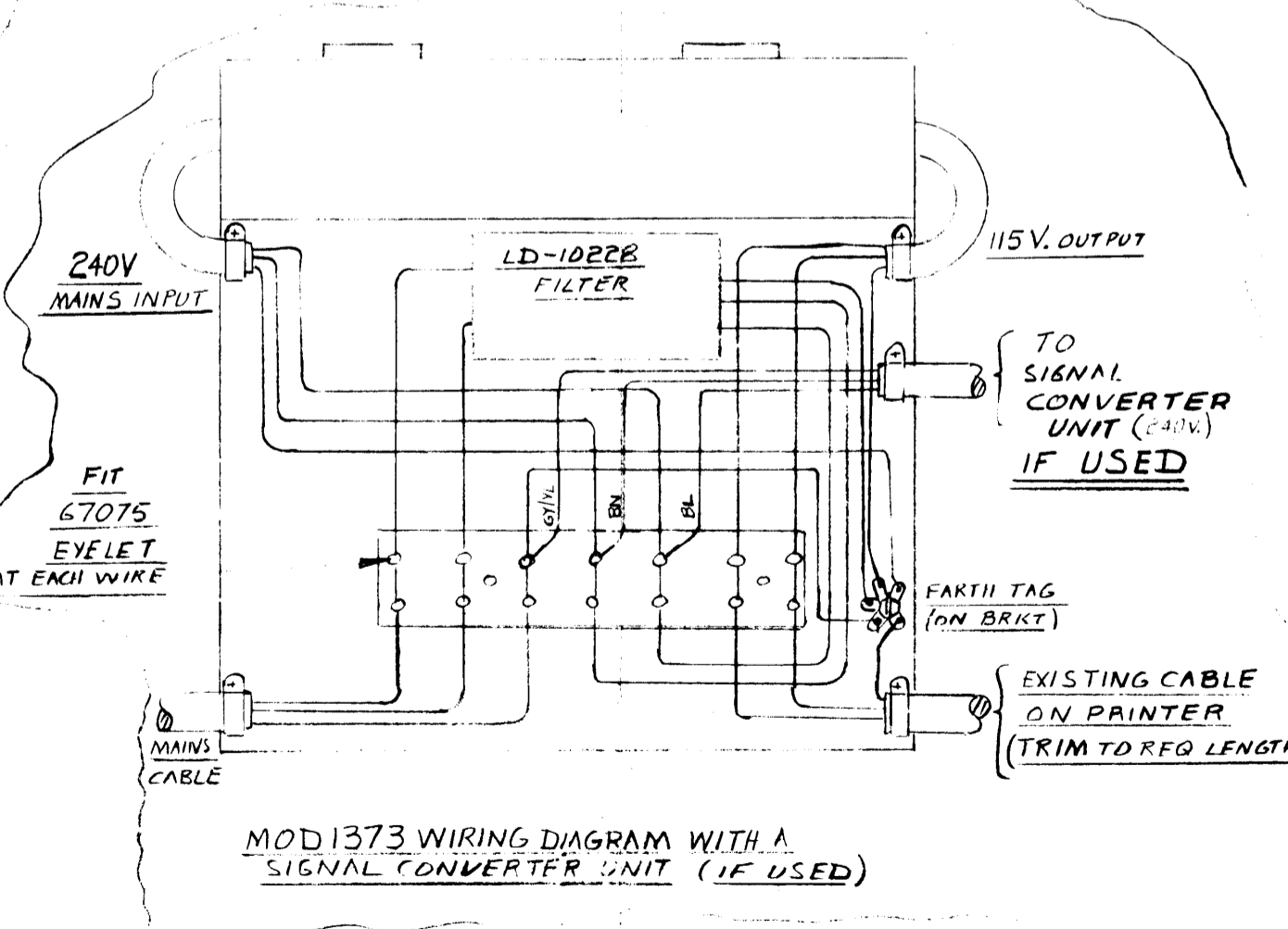
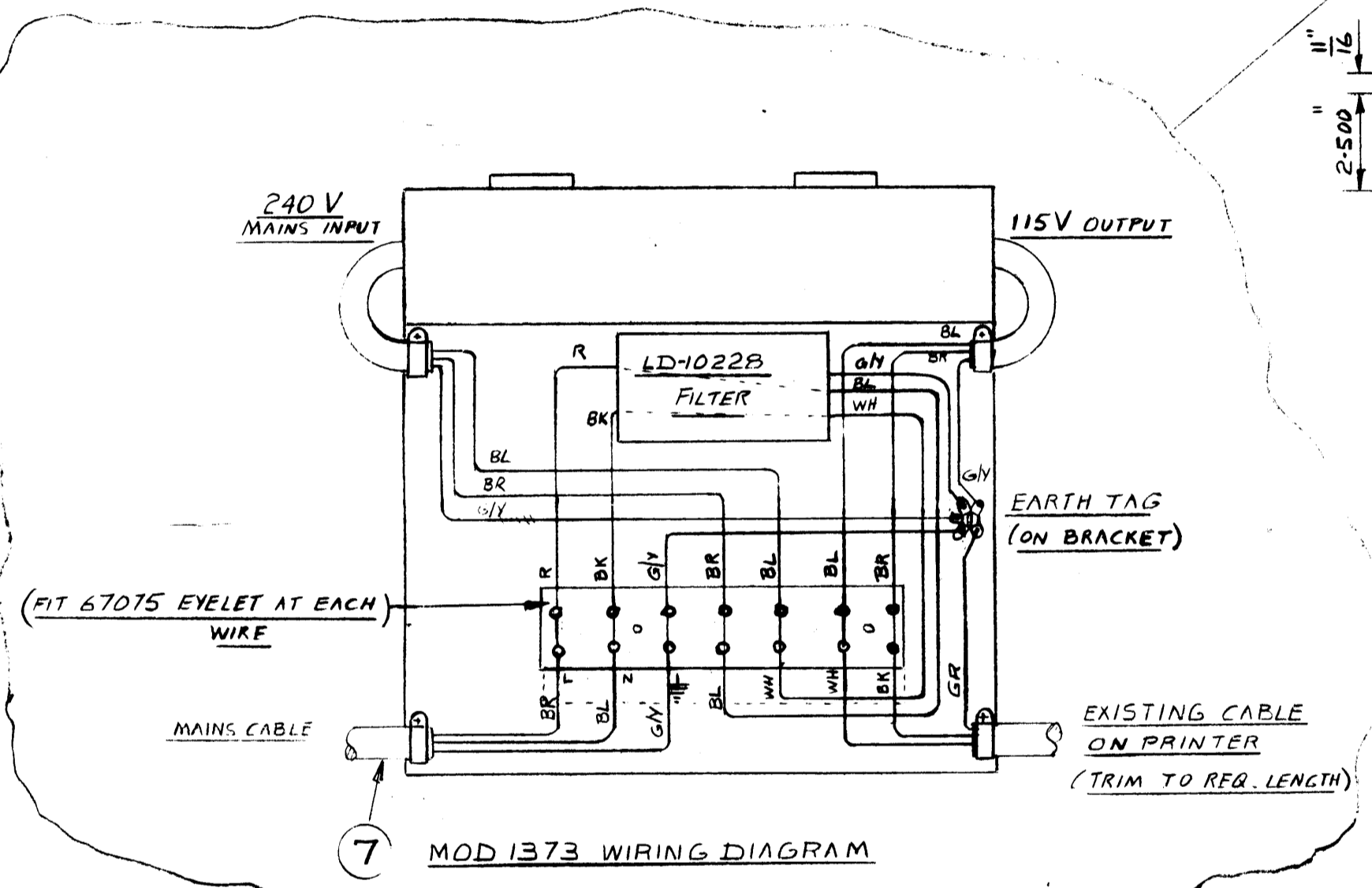
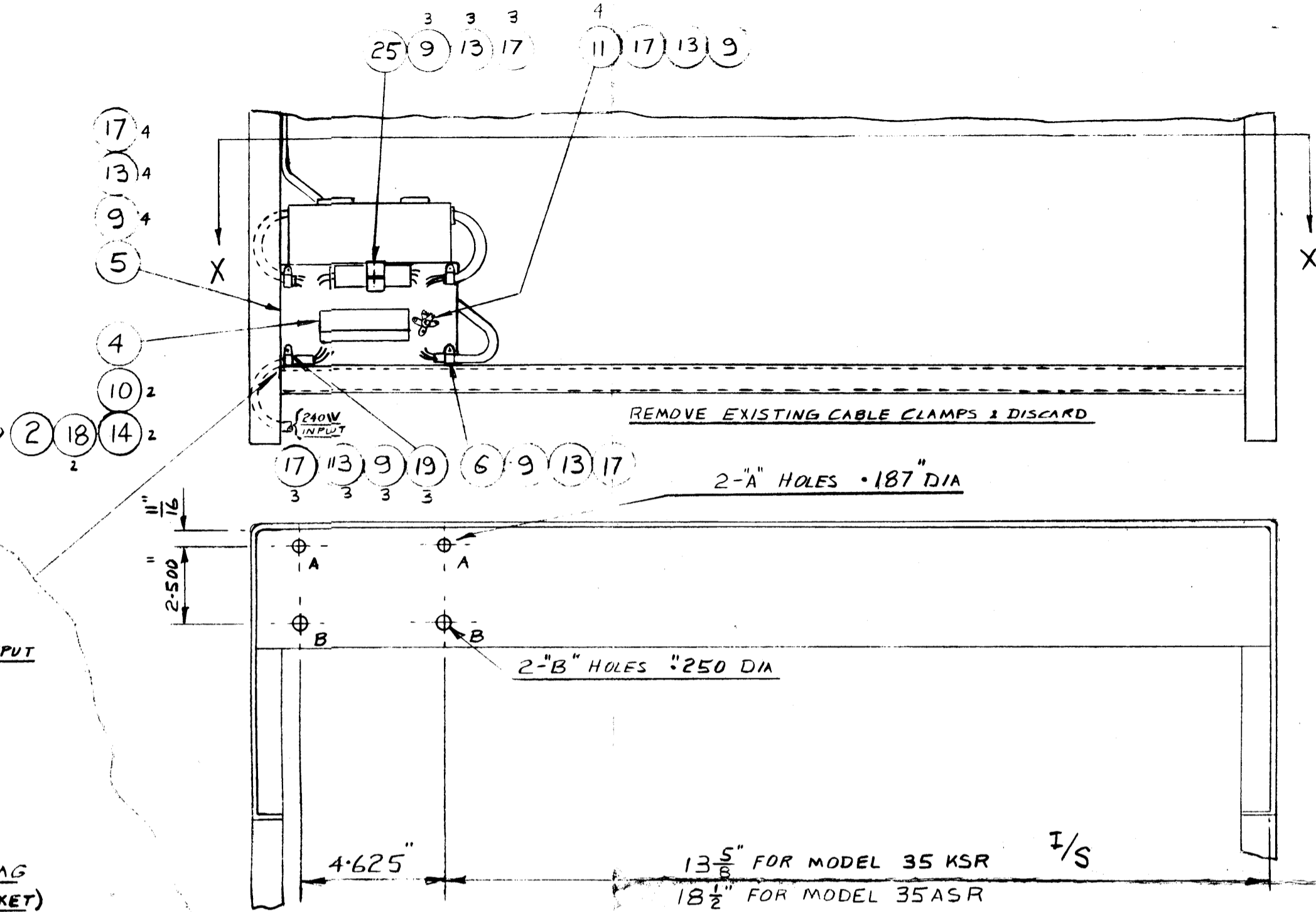
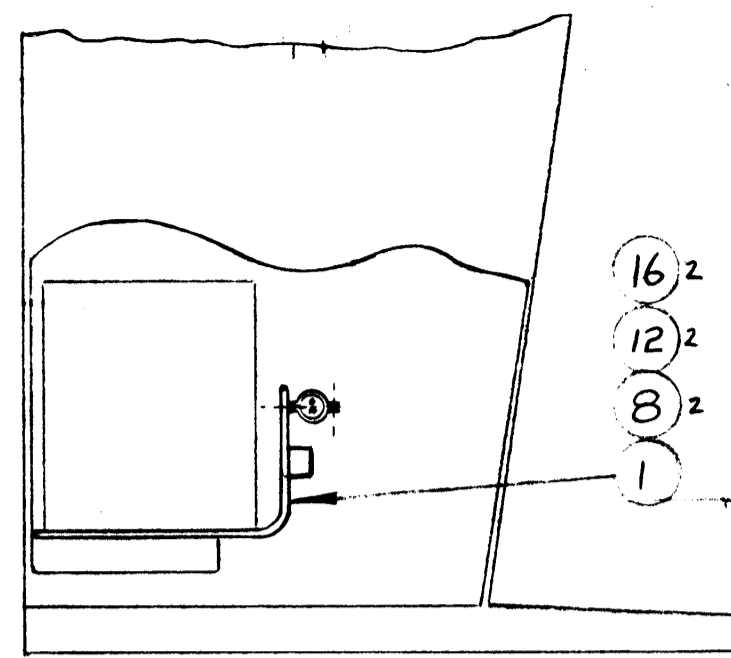
In order to generate this file, I need to scan the pages, split the double pages and remove any edge marks such as punch holes, clean up the pages, set the relevant pages to be all the same size and alignment. I then run Omnipage (OCR) to generate the searchable text and then generate the pdf file.

Hopefully after all that, I end up with a presentable file. If you find missing pages, pages in the wrong order, anything else wrong with the file or simply want to make a comment, please drop me a line (see above).

It is my hope that you find the file of use to you personally – I know that I would have liked to have found some of these files years ago – they would have saved me a lot of time !

Colin Hinson

In the village of Blunham, Bedfordshire.



MOD 1373 PROVIDES FOR THE FITTING OF A 500W AUTO-TRANSFORMER AND AN R.F. INTERFERENCE FILTER TO A TELETYPE MODEL 35 ASR OR KSR. PAGE PRINTER

ASSOCIATED DRAWINGS
 STOCK LIST :- P1592D
 MOD 1373 :- LC 539

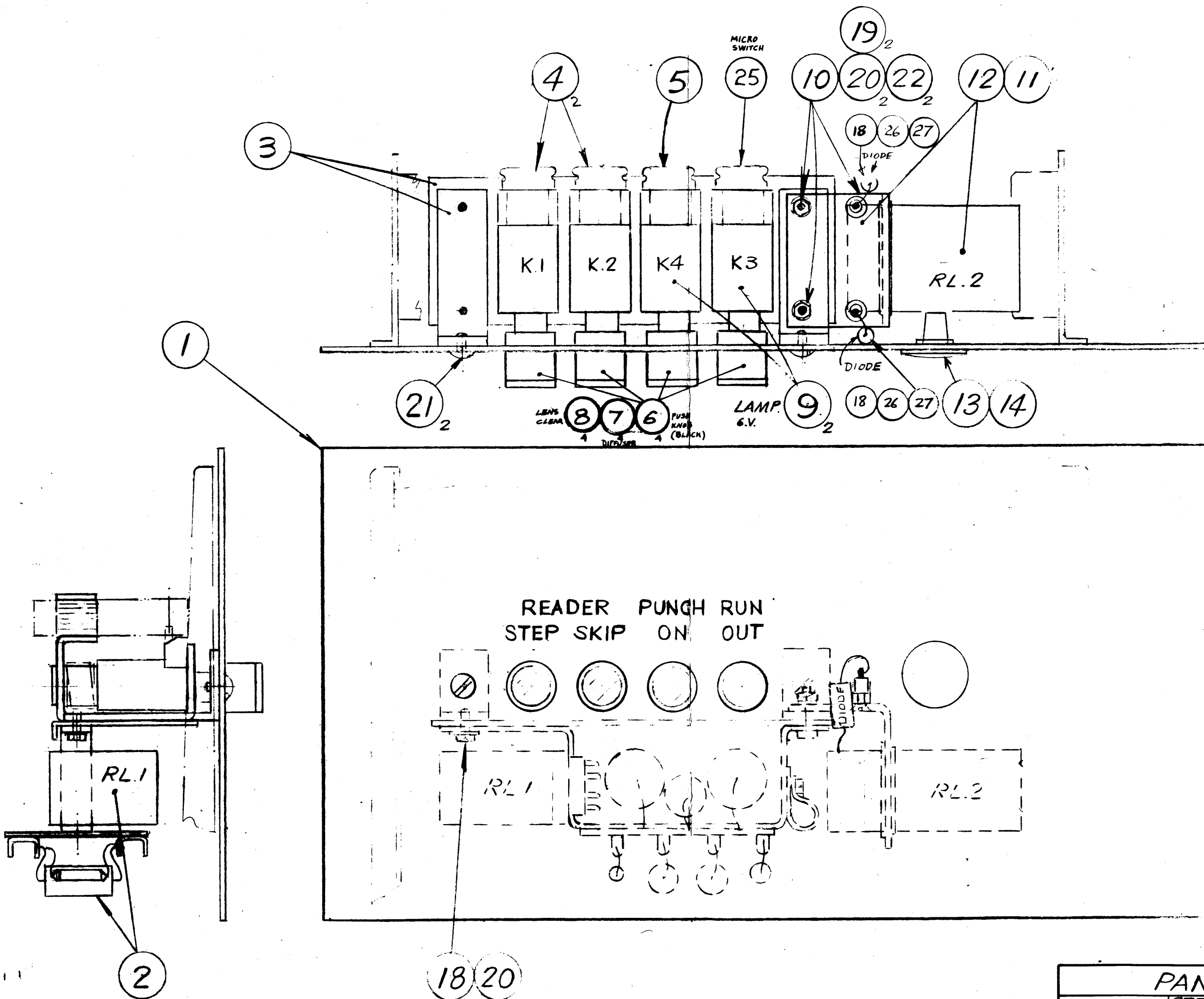
**MOD-1373 - TO MODEL 35 STAND
 TO FIT 500 WATT AUTO-
 TRANSFORMER & R.F. FILTER**

WESTREX CO LTD LONDON	
DRAWN B. WARD	APPD. DRG. [Signature]
TRACED	APPD. ENG. [Signature]
CHECK'D	APPD. FOR ISSUE [Signature]
3rd ANGLE PROJECTION SCALE:	LSO-15921

THIS DRAWING AND INFORMATION HEREON ARE THE CONFIDENTIAL AND COPYRIGHT PROPERTY OF THE WESTREX CO. LTD., AND MUST NOT BE DISCLOSED, LOANED, COPIED OR USED FOR MANUFACTURING, TENDERING, OR FOR ANY OTHER PURPOSE WITHOUT THEIR WRITTEN PERMISSION.

TOLERANCE ON DIMENSIONS	
FRACTIONAL ± 1/64"	METRIC: 1 PLACE ± 4 MM
DECIMAL ± .005"	2 PLACES ± 1 MM
UNLESS OTHERWISE SPECIFIED	

ISSUE 1 FEB 27TH 70 APD.
 ITEM 4 WAS 3 OFF.
 ITEM 25 ADDED
 ISS 2 SEP 14th 1970
 ITEM 25 & PARTS
 CLARIFIED B.M.M.D.
 ISS 3 NOV 26th 1970
 ITEMS 26 27 ADDED
 ISS 4 Nov. 30 - 70
 ASSY OF ITEMS 6,7,8,9,25
 CLARIFIED ONLY
 ISS 5 FEB. 24th 1971



ASSOCIATED DWGS
 DWG LIST P.15611
 STOCKLIST P.15612
 WIRING LSO.15614
 SCHEMATIC LSO.15264

PANEL ASSY.	
READER ^{STEP} SKIP, PUNCH ON, RUN OUT.	
ASSEMBLY.	
WESTREX CO LTD LONDON	
DRAWN T.M.	APPD. DRG.
TRACED	APPD. ENG.
CHECK'D	APPD. FOR ISSUE
3rd ANGLE PROJECTION SCALE:	LSL-15613

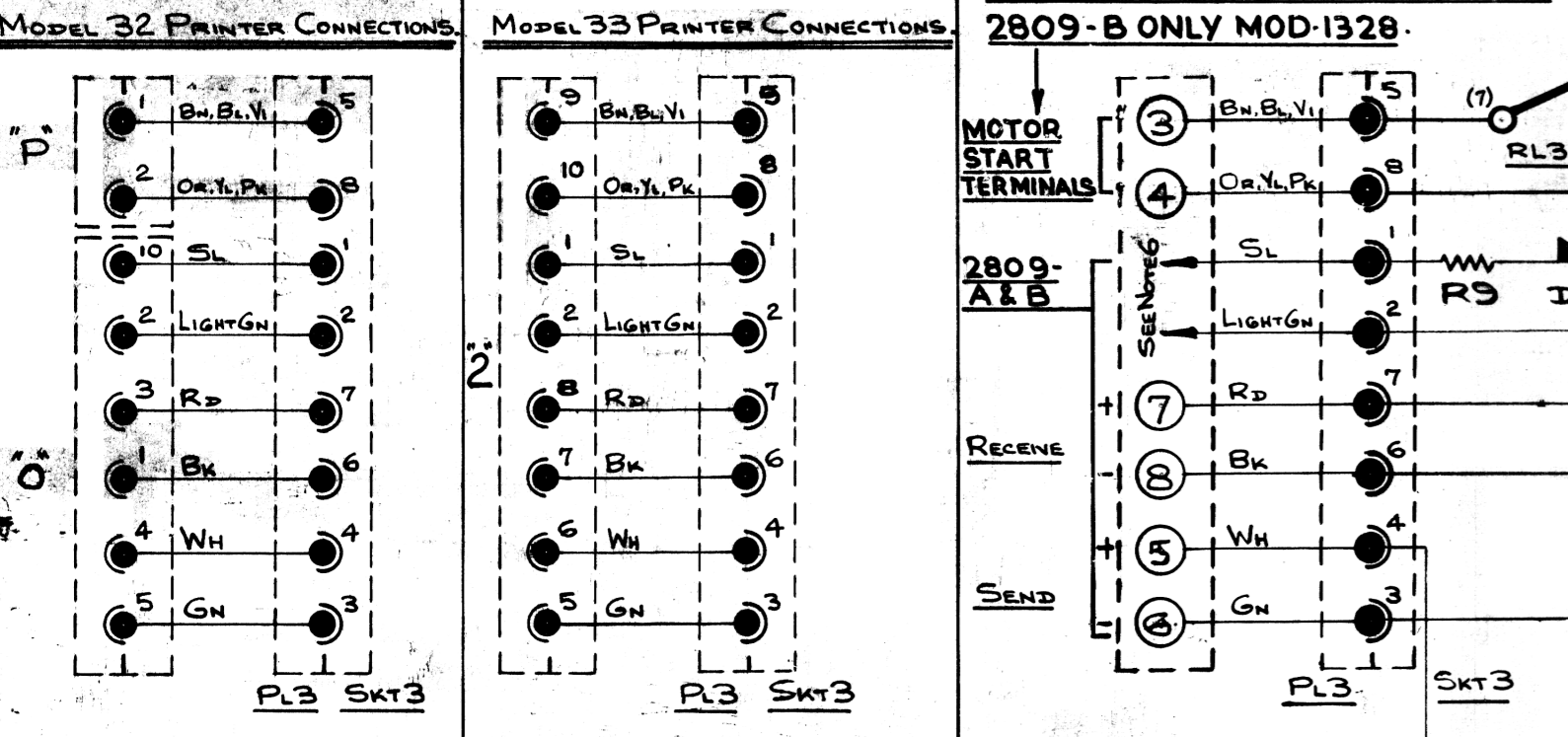
USED ON MOD. 1312

THIS DRAWING AND INFORMATION HEREON ARE THE CONFIDENTIAL AND COPYRIGHT PROPERTY OF THE WESTREX CO. LTD., AND MUST NOT BE DISCLOSED, LOANED, COPIED OR USED FOR MANUFACTURING, TENDERING, OR FOR ANY OTHER PURPOSE WITHOUT THEIR WRITTEN PERMISSION.

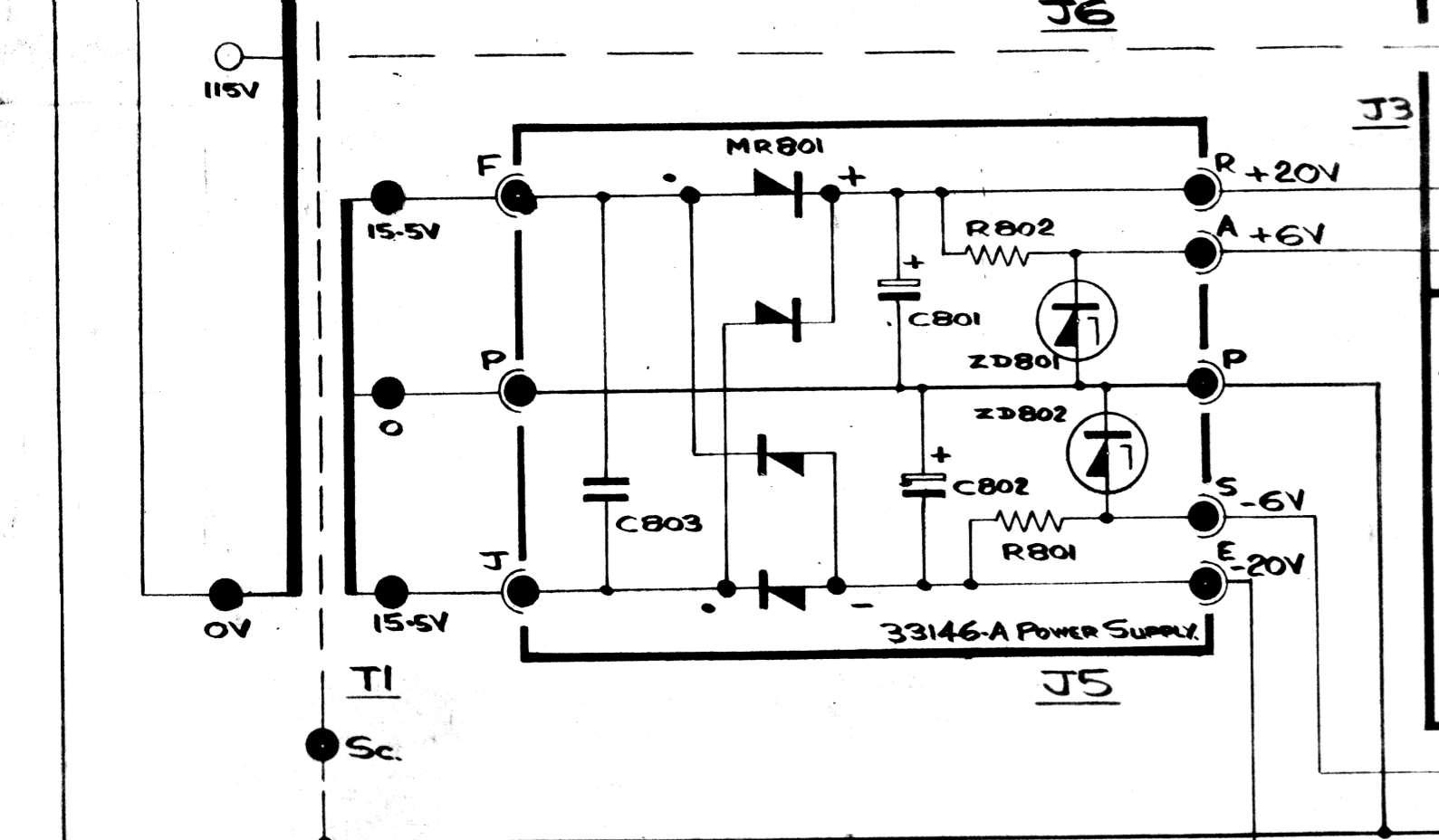
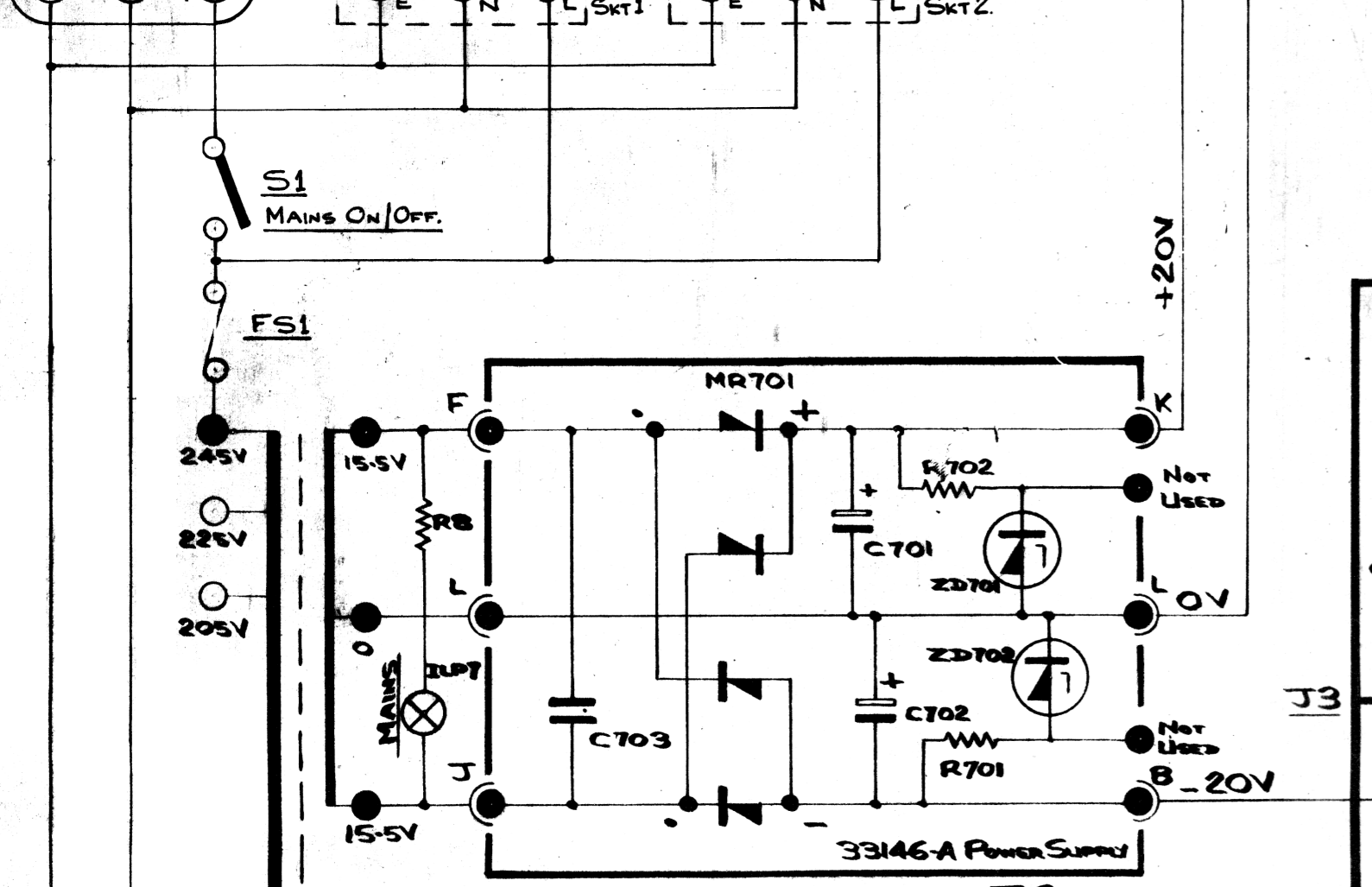
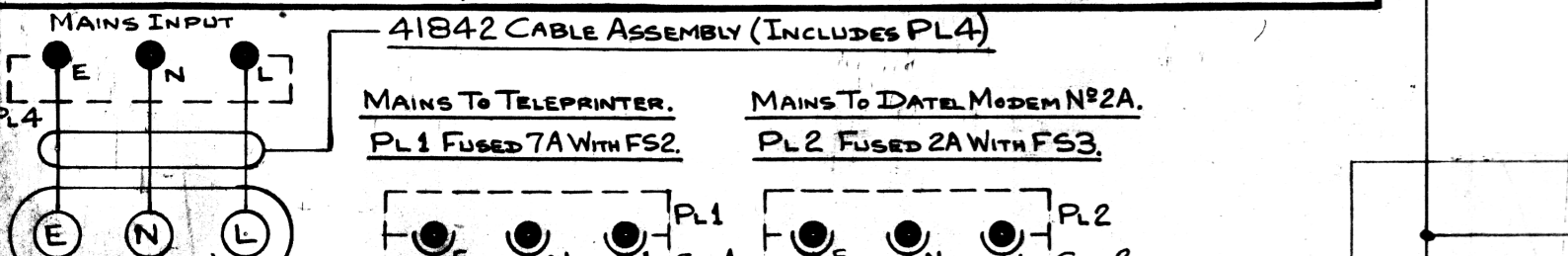
TOLERANCE ON DIMENSIONS	
FRACTIONAL ± 1/64"	METRIC: 1 PLACE ± 4 MM
DECIMAL ± .005"	2 PLACES ± 1 MM
UNLESS OTHERWISE SPECIFIED	

LSL-15613

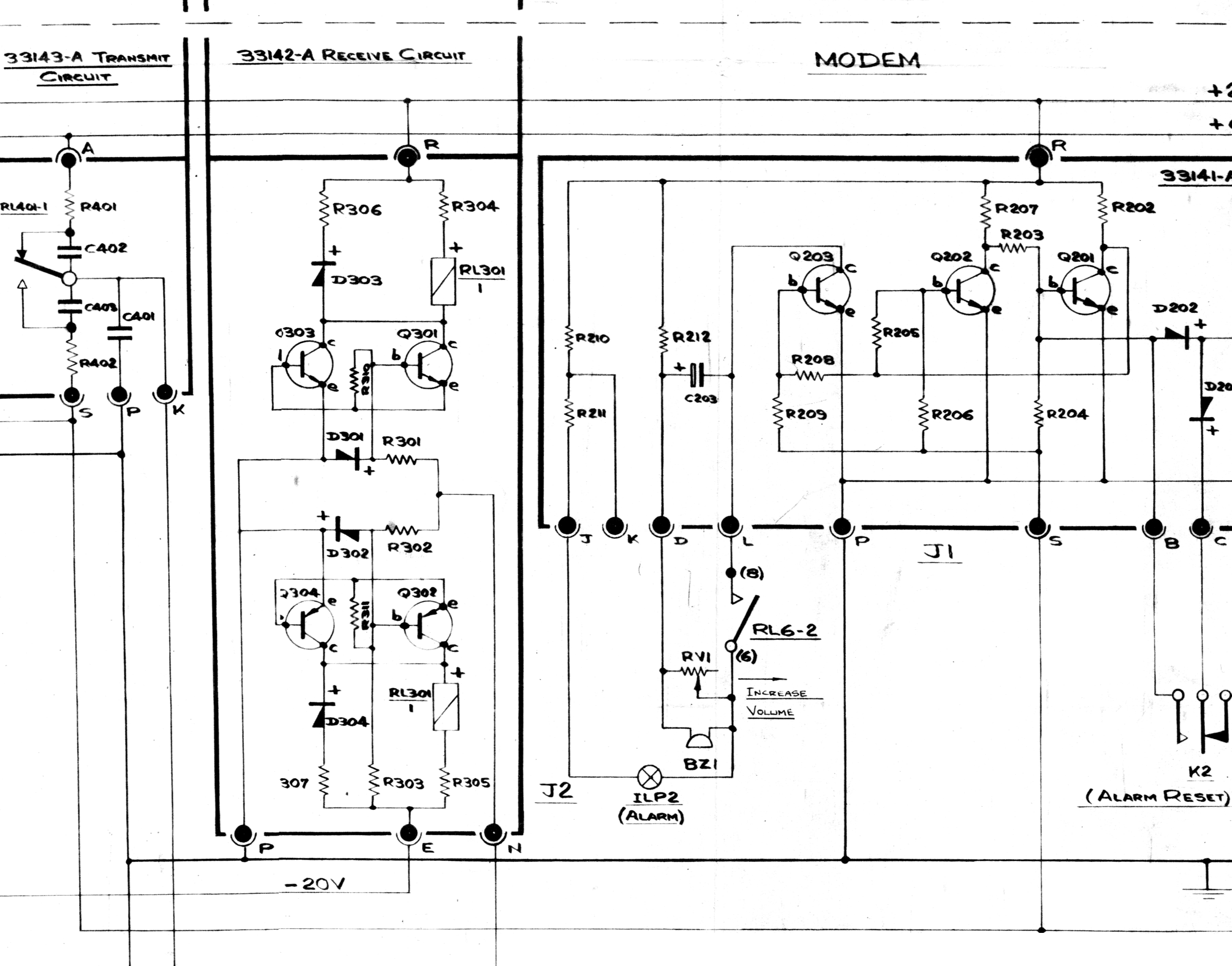
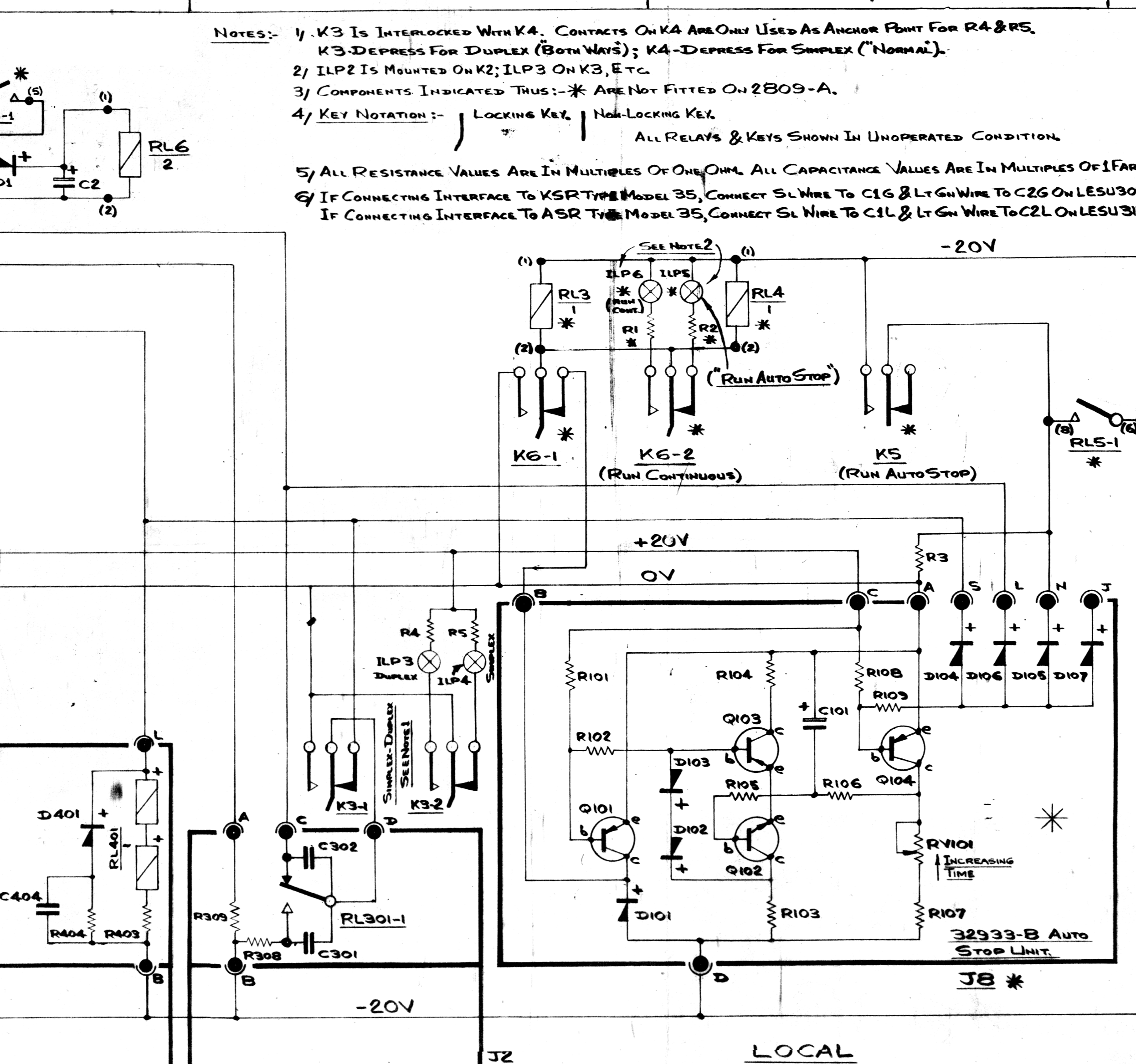
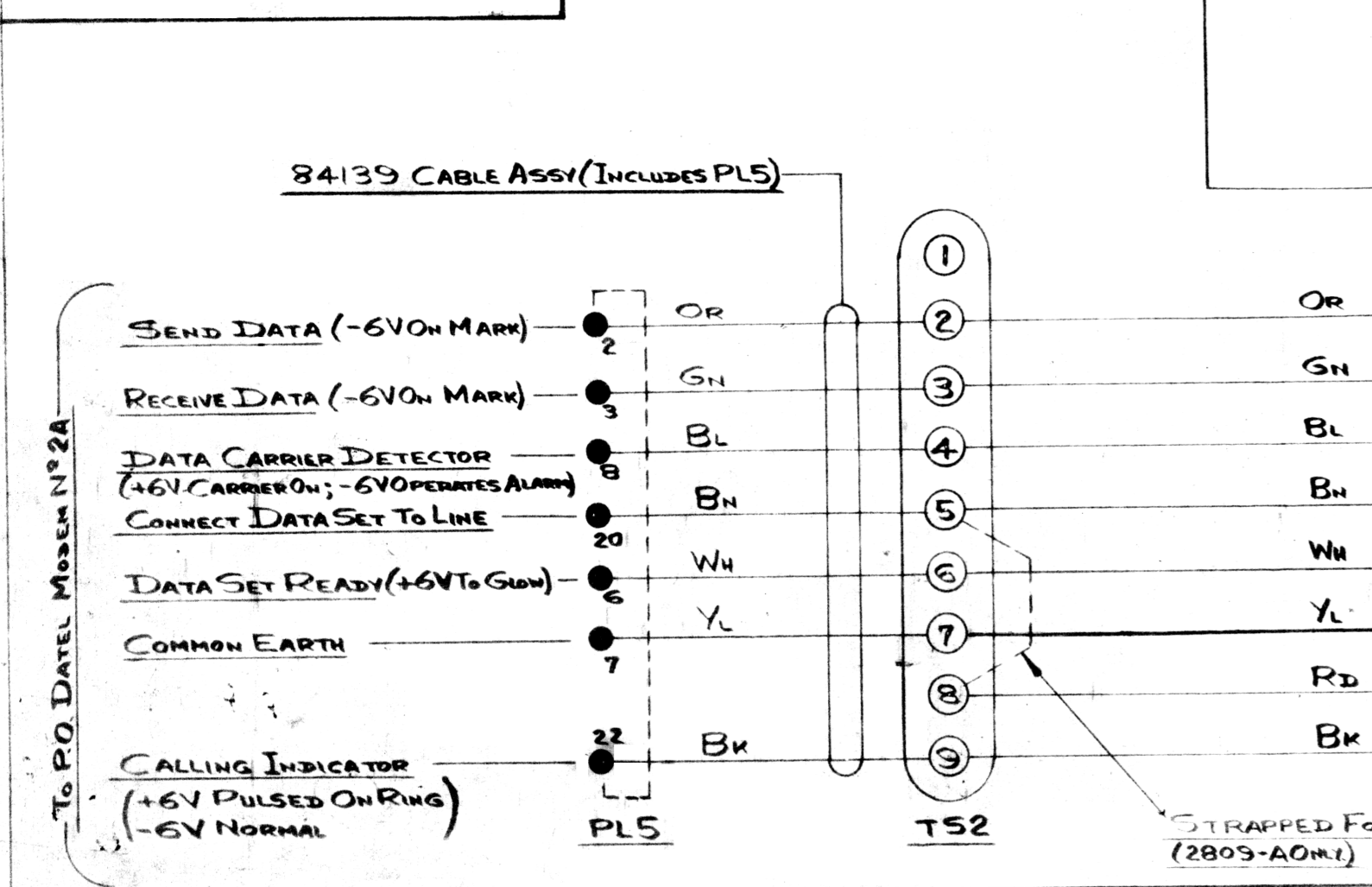
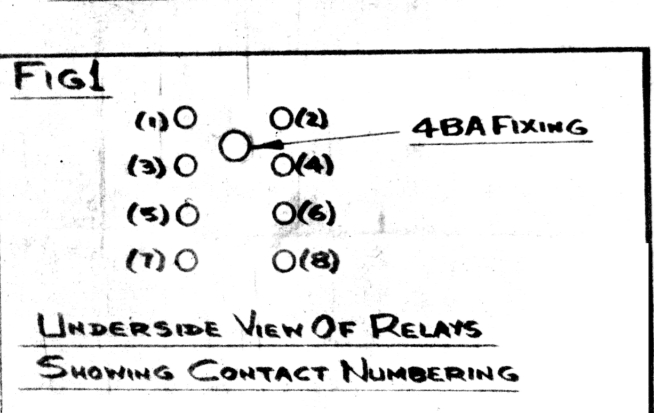
LSR 13882
MODEL 32 PRINTER CONNECTIONS
MODEL 33 PRINTER CONNECTIONS
MODEL 35 PRINTER CONNECTIONS
2809-B ONLY MOD-1328



41881 CABLE ASSY (INC PL 3 & 4)
 41882 CABLE ASSY (INC PL 3 & 4)
 41843 CABLE ASSY (INC PL 3)



2809-A: Manual Operation Interface Unit
 2809-B: Automatic Operation Interface Unit



This drawing and information hereon are the confidential and copy-right property of the WESTREX Co. Ltd., and must not be deducted, loaned, copied or used for manufacturing, rendering, or for any other purpose without their written permission

PL - 49

2809 - A & - B
INTERFACE UNIT

ISS	DATE	APD	USED ON	DRG.
1	JULY 1967 ALL SCREWS ETC ADDED			
2	AUG 30 TH 1967 ITEM 92 WAS 10 OFF. ITEM 103 WAS 20 OFF. ITEM 106 WAS 24 & 33 OFF. ITEM 85 ADDED ITEM 93 ADDED ITEM 110 WAS 36 & 29 OFF.			
3	NOV 6 TH 1967 ITEM 87 ADDED			
4	NOV 7 TH 1967 ITEMS 101 & 102 ADDED			
5	NOV 20 TH 1967 ITEMS 109 & 112 ADDED			
6	NOV 23 RD 1967			
			ASSOCIATED DRGS.	

ISS	QTY	REF.	PART No.	NAME OF PART
	1	1	85 LD 9898	CAPACITOR 25µF 50V C2
	8	6	86 TP1B1B19	CONNECTOR - CIRCUIT CARD
	1	1	87 LD 9899	LABEL
	4	4	88	6 BAX 1/2" LG INST. HD SCR. STL CAD PLATED
	4	4	89	6 BAX 3/8" LG INST. HD SCR. STL CAD PLATED
	7	4	90	6 BAX 3/8" LG CSK HD SCR. STL CAD PLATED
	21	17	91	6 BAX 1/2" LG CH HD SCR. STL CAD PLATED
	2	2	92	6 BAX 3/8" LG CH HD SCR. STL CAD PLATED
	2	2	93	6 BAX 3/16" LG CH HD SCR. STL CAD PLATED
	8	8	94	4 BAX 1/2" LG INST. HD SCR. STL CAD PLATED
	14	14	95	4 BAX 3/8" LG CH HD SCR. STL CAD PLATED
	8	8	96	4 BAX 1/2" LG CH HD SCR. STL CAD PLATED
	5	5	97	4 BAX 1/4" LG CH HD SCR. STL CAD PLATED
	2	2	98	4 BAX 3/4" LG CH HD SCR. STL CAD PLATED
	2	2	99	4 BAX 1/2" LG CSK HD SCR. STL CAD PLATED
	2	2	100	4 BAX 1/4" LG CSK HD SCR. STL CAD PLATED
	1	1	101 LD 9903	WASHER
	1	1	102 LD 9904	PLATE
	8	8	103	6 BA STD PLAIN WASHER. STL CAD PLATED
	2	2	104	4 BA STD TURNED WASHER. STL CAD PLATED
	4	4	105	4 BA STD PLAIN WASHER. STL CAD PLATED
	34	27	106	6 BA STD HEX FULL NUT. STL CAD PLATED
	30	30	107	4 BA STD HEX FULL NUT. STL CAD PLATED
	2	2	108	4 BA STD HEX THIN NUT. STL CAD PLATED
	1	1	109 LD 7356	NAMEPLATE
	38	31	110	6 BA INT'L SHAKEPROOF LOCK WASHER. STL
	36	36	111	4 BA INT'L SHAKEPROOF LOCK WASHER. STL
	2	2	112	DRIVE SC. N° 00 TYPE U x 5/32" LG CAD OR NIP

QTY	REF.	PART No.	NAME OF PART
1	1	DRN. R.V.H	TITLE 2809 - A & - B
1	1	CHD. [Signature]	INTERFACE UNIT
1	1	APD. [Signature]	PL - 49
1	1	DATE [Signature]	SHT. 4 OF 4 SHTS.
			WESTREX CO., LTD., COLES GREEN RD., LONDON, N.W.2.

PL-49

2809-A & -B
INTERFACE UNIT

This drawing and information hereon are the confidential right property of the WESTREX Co. Ltd., and must not be loaned, copied or used for manufacturing, rendering, or other purpose without their written permission

ISS	DATE	APD	USED ON	DRG.
1	JULY 1967			
2	AUG 24 TH 1967			
3	AUG 30 TH 1967			
4	SEPT 14 TH 1967			
5	SEPT 18 TH 1967			
6	NOV 8 TH 1967			
7	NOV 9 TH 1967			
8	NOV 9 TH 1967			
9	FEB. 12 TH 1968			
10	JULY 1968			

ISS	QUANTITY	REF.	PART No.	NAME OF PART	ASSOCIATED DRGS.
2	2		84133	BRACKET	
1	1		84134	PLATE	
1	1		84139	CABLE ASSY	PL-57
1	1		LD9093	RESISTOR 2.7K ±5% 5W	R9
1	1		LD9900	INSULATOR	
			62		
-	1		95274	FRONT PANEL - MARKING	
1	-		95275	FRONT PANEL - MARKING	
1	1		95277	REAR PANEL - MARKING	
1	1		95278	COVER	
			67		
-	1		95310	CABLEFORM (MODEM)	PL-71
-	1		LSR13997	CABLEFORM (LOCAL)	PL-73
1	1		LSR13967	CHASSIS	
1	1		LSR13969	COVER	
1	-		95311	CABLEFORM (MODEM)	PL-71
1	-		LSR13998	CABLEFORM (LOCAL)	PL-73
			74		
1	-		32933-B	AUTO STOP CIRCUIT	PL-14
1	1		33138-A	TRANSFORMER	SEE LSR 9520
1	1		33141-A	DATA CARRIER DETECTOR CIRCUIT	PL-14
1	1		33142-A	RECEIVE CIRCUIT	PL-15
1	1		33143-A	TRANSMIT CIRCUIT	PL-16
1	1		33144-A	DATA SET READY CIRCUIT	PL-17
1	-		33145-A	CALLING INDICATOR CIRCUIT	PL-18
*	2		33146-B	POWER SUPPLY CIRCUIT	PL-19
1	1		LD7673	RECTIFIER DD006	
1	1		54944	TERMINAL STRIP 7WAY	

QUANTITY	REF.	PART No.	NAME OF PART
2809-1			
2809-1			

DRN. RVH
CHD.
APD.
DATE

TITLE
2809-A & -B
INTERFACE UNIT

PL-49
SHT. 3 OF 4 SHTS.

WESTREX CO., LTD., COLES GREEN RD., LONDON, N.W.2

PL - 49

2809-A & -B
INTERFACE UNIT

This drawing and information hereon are the confidential and copy right property of the WESTREX Co. Ltd., and must not be deducted, loaned, copied or used for manufacturing, rendering, or for any other purpose without their written permission

APD	DATE	ISS	USED ON	DRG.
	RE-DRAWN FROM ISSUE 9. OLD DRG. RETAINED. ITEMS 39 44, 45 & 46 ADDED. ITEM 32 WAS 2-1 OFF. 10 NOV 6 TH 1967 ITEM 46 WAS LD 6524 27.5 ¹ / ₂ W NOV 7 TH 1967 ITEM 47 WAS 40288. 1/2 AMP FUSE. 12 JAN. 27. 1971			
ASSOCIATED DRGS.				

			29	41842	CABLE ASSEMBLY	PL-58
	1	1	30	41741	LAMP HOLDER	
	2		31	54118	PUSH BUTTON KEY NON-LOCK 2c/o	K2 - K5
	1	-	32	54120	PUSH BUTTON KEY LOCKING 2c/o	K1 - K6
	2	2	33	54122	PUSH BUTTON KEY INTERLOCK 2c/o	K3 - K4
	6	4	34	LD 6918	LAMP 6V 40mA	ILP1-6
	1	1	35	54466	TERMINAL BLOCK - 3WAY	
			36	55028	LABEL	
			37	55093	BLEEP TONE	821
			38	55104	PLATE	
			39	55108	BRACKET	
	2	2	40	53190	SCREW	
	2	2	41	52458	PILLAR 4BA 3/8" LONG	
	1	1	42	LD-9882	POTENTIOMETER PRE-SET WIRE WOUND 2KΩ RVI	
	1	1	43	53873	NAMEPLATE	
	1	1	44	LD 6787	LAMP 12V .1A	
	1	1	45	LD 8626	LAMP HOLDER (WHITE)	
	1	1	46	LD 9045	RESISTOR 220Ω ±5% 5W	
	1	1	47	40289	FUSE 1A	
	1	1	48	41843	CABLE ASSY	PL-59
	1	-	49	53730	CAPACITOR .47μF ±10%	C1
	1	1	50	66232	TAG 4BA	
	3	2	51	66233	TAG 6BA	
	3	3	52	65437	BUSH	
	2	2	53	LD 6779	RESISTOR 100Ω ±10% 1/2W	
	4	2	54	LD 6778	RESISTOR 390Ω ±10% 1W	
	1	-	55	LD 6778	RESISTOR 4.7KΩ ±10% 1W	
	1	1	56	70555	SWITCH	S1

QUANTITY	REF.	PART No.	NAME OF PART
	B A		
DRN. R V H	TITLE 2809-A & -B		PL-49
CHD.	INTERFACE UNIT		SHT. 2 OF 4 SHTS.
APD.	WESTREX CO., LTD., COLES GREEN RD., LONDON, N.W.2.		
DATE			

PL - 49

2809-A & -B

INTERFACE UNIT

This drawing and information hereon are the confidential and right property of the WESTREX Co. Ltd. and must not be deduced, loaned, copied or used for manufacturing, rendering, or for any other purpose without their written permission

ISS	DATE	APD	USED ON	DRG.
	LD-2214 AND LD-9872 ADDED. 41836 PLUG. REMOVED. LD-9877 ADDED.			
2	AUG. 27 TH 1967			
3	ITEM 27 ADDED. AUG. 17 - 1967 DRG. NO ADDED TO ITEM. 22823.			
4	ITEM 13 WAS 41740. 1 OFF ITEM 10 WAS 41808			
5	AUG 24 TH 1967 (ITEM 1 WAS 307) ITEMS 13, 24, 25 & 28 ADDED. AUG 30 TH 1967 (ITEM 9 DELETED (NOW ON PL-59)) ITEM 23 WAS 3 OFF (SEE PL-58)			
6	SEPT 18 TH 1967 1 OFF ADDED TO ITEMS 4 5, 13, 20. ITEM 9 ADDED			
7	NOV 6 TH 1967 (ERRATA) ITEM 12 WAS 41058			
8	NOV 24 TH 1967			

ASSOCIATED DRGS.

ASSEMBLY	LSXX13966
SCHEMATIC (-B)	LSR13982
WIR DIAG (-A)	LSXX13987
WIR DIAG (-B)	LSXX13982

		4	4	1	LD 6933	BUSH
		2	2	2	LD 7442	CAPTIVE NUT
		6	4	3	LD 9827	DIFFUSER - ROUND
		4	1	4	LD 9555	SOCKET (RELAY)
		4	1	5	LD 9556	RETAINER & PLATE
		1	1	6	LD 9831	INTERLOCK BAR 2WAY .709" SPACING
		1	1	7	LD 9618	CABLE CLAMP
		1	1	8	LD-2214	CONNECTOR - FEMALE
		2	2	9	LD 7292	STAND-OFF INSULATOR
		1	1	10	55113	TERMINAL STRIP
		1	1	11	40287	FUSE HOLDER
		1	-	12	41065	RELAY
		2	2	13	LD 9617	CABLE CLAMP.
		6	4	14	41752	PUSH KNOB - ROUND - BLACK
		6	4	15	41760	LENS - ROUND - CLEAR
		2	2	16	41828	BRACKET
		1	1	17	41829	COVER
		1	1	18	41830	BRACKET
		1	1	19	41831	COVER
		3	1	20	41833	RELAY.
		3	2	21	41773	MOUNTING BRACKET 2WAY .709 SPACING
		2	2	22	LD-9880	SOCKET 13 AMP
		2	2	23	LD-9881	PLUG 13 AMP
		1	1	24	LD 9884	FUSE 2A
		1	1	25	LD 9885	FUSE 7A
		4	4	26	LD-9877	FOOT
		1	1	27	LD-9879	MARKER STRIP - (FOR ITEM 10)
		1	-	28	LD-9887	LABEL

QUANTITY	REF.	PART No.	NAME OF PART
2809-1		DRN. R.V.H	TITLE 2809-A & -B
2809-1		CHD.	INTERFACE UNIT
		APD.	PL-49
		DATE	SHT. 1 OF 4 SHTS.
WESTREX CO., LTD., COLES GREEN RD., LONDON, N.W.2			

This drawing and information hereon are the confidential and copy-right property of the WESTREX Co. Ltd., and must not be disclosed, loaned, copied or used for manufacturing, tendering, or for any other purpose without their written permission.

<u>Rqd.</u>	<u>Item No.</u>	<u>Drng. or. Cat. No.</u>	<u>Description</u>	
1	1	84339	Panel	
1	2	LSL.15605	Brkt. & Comp. Assembly (St.Lst. P.15604)	
1	3	41775	Mounting Bar Assembly (TMC S/ 529011)	
2	4	54119	Push Button Key	K.1, K2
1	5	54121	Push Button Key	K-4
4	6	41752	Push Knob - Black	
4	7	LD-9827	Diffuser	
4	8	41760	Lens Clear	
2	9	LD6918	Lamp 6 V.	
1	10	42405	Bracket(Relay Mtg.)	
1	11	LD-9893	Relay 4 C/O 115V Coil	RL.2
1	12	LD-9650	Base (Relay)	
1	13	TP-192538	Plug Button	
1	14	TP-117608	Speed Nut	
6	15	TP.-192007	Connector	
As Rqd.	16	LD-8727	Wire	
48"	17	LD-9588	Sleeving	
1	18		6BA x 1/4" Lg. Ch.Hr. Scr. St.Cad.Pl.	
2	19		6BA x 1/2" Lg. Ch.Hd. Scr. St.Cad.Pl.	
3	20		6BA Stnd Flat Washer St.Cad.Pl.	
2	21		4BA x 1/4" Lg. Instr Hd. Scr. St. Chrome Pl.& Polish	
2	22		6BA Stnd Hex. Nut St.Cad.Pl.	Hd.
3	23	TP.182644	TERMINAL (FEMALE)	
8	24	TP.182643	TERMINAL (MALE)	
1	25	55426	MICROSWITCH KEY (K3)	
1	26	LD-7292	Stand off Insulators 6BA	
2	27	LD-7673	Diode DD006	

Used On:-
Mod.1312

Associated Drawings:-
Drawing List:- P.15611
Assembly :- LSL.15613
WIRING :- LSO.15614

APP. ISS. 193.27.70 ITEM 4 WAS OFF. ITEM 25 ADDED ISS 2. SEP 14 th 70 ITEM 8 WAS 41753 ITEM 26 & 27 ADDED ISS 3. NOV 28 th 1970 ITEM 26 WAS 1 OFF ISS 4. DEC 1970 ITEM 26 WAS 2 OFF ITEM 27 WAS 3 OFF ISS 5. 24 th DEC 70 ITEM 9 WAS 54131 (REV) ISS 6. 21-1-1971	DR. TM	ENG.	Panel Assembly For Reader Step/Skip Punch On&Run Out
	APP.	P-	Stocklist WESTREX CO. LTD. LONDON 15612

185

2

CONTENTS

Section	Sheet
1 GENERAL	3
1.1 Documentation	3
2 SIX-MONTHLY OR 1 000 HOURS	3
2.1 Basic Checks	3

TABLES

1 LUBRICANT COMMERCIAL EQUIVALENTS	3
------------------------------------	---

RELATED DOCUMENTS

	Number
Technical Description	1111445
Pre-Packing Instructions	1111640
Installation Instructions	1111639
Teletype Bulletin 280B, Vol. 1. ASR	
Teletype Bulletin 280B, Vol. 2. ASR	
Teletype Bulletin 1187B, Parts. ASR	
Teletype Bulletin 281B, Vol. 1. KSR	
Teletype Bulletin 281B, Vol. 2. KSR	
Teletype Bulletin 1201B, Parts. KSR	
Teletype Bulletin 295B, Motor Units	
Drawings:	
Model 35 Teletypewriter, ASR	LSX15257
Model 35 Teletypewriter, KSR	LSR15256
Telephone Circuits	LSR13882
Telegraph Circuits	LSO13859
Reader Step, Skip, Punch Controls and Run Out	LSO15264

ISS

1 GENERAL

There are eight variants of the 7072 Teletypewriter and the schedule in section 2 applies to all of them.

1.1 Documentation

Information pertinent to the maintenance of the Teletype-writers is contained in the Teletype Manuals, which are arranged as follows: Volume 1 provides field replacement and lubrication instructions for all assemblies including, where applicable, the tape reader and tape punch fitted to Automatic Send-Receive models (ASR). Volume 2 contains adjustment instructions for all assemblies, and the remaining volume is an illustrated parts list.

It should be noted that before any complete adjustment is made to any unit, the general notes which precede the appropriate section of the Adjustment Manual Volume 2 should be read and understood. This applies particularly to the Typing Unit, Section 574-200-700, paragraph 1.07. The requirement for all adjustments detailed must be fully understood before any attempt is made to alter a condition.

2 SIX-MONTHLY OR 1 000 HOURS (3 hours)

The machine should be lubricated immediately before it goes into service and again after a period of four weeks use, ensuring that all points receive attention. Thereafter the following schedule should be carried out every six months or 1 000 hours, whichever is the earlier.

- (a) Switch off the mains supply.
- (b) Remove the control panel bezel and copy light plug.
- (c) Raise the cabinet lid or enclosure cover and remove the four retaining screws that secure the unit to its base.
- (d) Remove the cable plug connector R from the side frame.
- (e) Lift the typing unit off its locating pillars. (This gives access to the inner parts of the machine and facilitates lubrication).

Note that, on reassembly, when lowering the typing unit back on to the locating pillars, rotate the mainshaft to assist gear meshing and check that the drive train from the motor is free-running. Reference Volume 2, section 574-222-270, paragraph 2.20.

For the specific Lubrication schedule refer to the Teletype Bulletin.

Volume 1	Section	547-220-701	Typing Unit	All	Models
"	"	547-221-701	Keyboard	KSR	"
"	"	547-222-701	Keyboard	ASR	"
"	"	547-228-701	Cabinet	ASR	"
"	"	547-229-701	Cabinet	KSR	"
"	"	547-233-701	Reperforator	ASR	"
"	"	547-235-701	Answer Back Unit	All	"
"	"	547-236-701	Tape Reader	ASR	"

2.1 Basic Checks

The following basic conditions should be checked; for more detailed information references are given for Volume 1, Section 574-220-701, page 2, and Volume 2, Section 574-220-700, page 4, paragraph 1.07.

- (a) Printing carriage position. Paragraph 2.46.
- (b) Printing hammer bearing stud. Paragraph 2.46.
- (c) Printing hammer stop bracket. Paragraph 2.49.
- (d) Lower draw wire rope. Paragraph 2.40.
- (e) Dash pot vent screw adjustment. Paragraph 2.45.
- (f) Check that the transfer slide will allow free-running. Paragraph 2.45.
- (g) Re-test equipment in local mode and ensure all functions are correct before engineer mode programs are run.

The following table lists the necessary lubricants and equivalents; however, for U. K. use, ICL No. 2, Mixture; and ICL No. 8, Grease are all that are normally required.

TABLE 1
LUBRICANT COMMERCIAL EQUIVALENTS

ICL Reference	Commercial Equivalent	
	Name	Supplier
ICL Lubricant No. 2, Oil Part No. 590419 (1 pint)	Magna H. L.	Castrol Industrial Ltd.
	Esso Millcott	Esso Petroleum Co.
	K. 50	Ltd.
	Caltex Stazen	Regent Oil Co. Ltd.
	L.	

158 Table 1 (contd)

ICL Reference	Commercial Equivalent	
	Name	Supplier
	Shell Tonna 33	Shell Mex & B. P. Co. Ltd.
ICL Lubricant No. 8, Grease Part No. 590401 (2 oz.)	M. S. 4	Midland Silicone Ltd.
ICL Lubricant No. 21, Oil Part No. 590399	Clear Moly	Senol Ltd.
ICL Lubricant No. 2, Mixture. Part No. 590424. (See below).		

A special mixture made up of ICL lubricants is needed for lubricating certain parts of the machine. This lubricant will be known as ICL Lubricant No. 2, Mixture, part number 590424. Its constituent parts are ICL Lubricant No. 2, Oil and a 20 per cent additive of ICL Lubricant No. 21, Oil.

UNLESS OTHERWISE STATED, THE FOLLOWING APPLY: DO NOT SCALE. THIRD ANGLE PROJECTION. ALL DIMENSIONS IN INCHES. REMOVE ALL BURRS AND UNNECESSARY SHARP EDGES. INTERNAL CORNERS TO HAVE .01 MAX. RADIUS. TOLERANCE ON ALL LINEAR DIMENSIONS ± .01. DIRECTION OF GRAIN UNIMPORTANT.

DRG. No.

DATE

PROD/OA

DATE

DES. AUTH.

CHKD.

DATE

DATE

DRN. R. LOGAN

OZALID 9038

VARIANT	7072/1	7072/2	7072/3	7072/4	7072/5	7072/6	7072/7	7072/8	FI 219	FI 220	FI 290	FI 214	FI 215	FI 221
V 1	•								•					
V 2		•							•					
V 3	•								•	•				
V 4		•							•	•				
V 5	•								•		•			
V 6		•							•		•			
V 7	•								•				•	
V 8		•							•				•	
V 9	•								•	•			•	
V 10		•							•	•			•	
V 11	•								•		•		•	
V 12		•							•		•		•	
V 13			•						•				•	
V 14				•					•				•	
V 15			•						•	•			•	
V 16				•					•	•			•	
V 17			•						•		•		•	
V 18				•					•		•		•	
V 19			•						•				•	
V 20				•					•				•	
V 21			•						•	•			•	
V 22				•					•	•			•	
V 23			•						•		•		•	
V 24				•					•		•		•	
V 25			•						•				•	
V 26				•					•			•	•	
V 27			•						•				•	
V 28				•					•	•			•	
V 29			•						•		•		•	
V 30				•					•		•		•	

ISS. CHANGES

XK 7
P486-3
12-69

11	1	12	
9	1	10	1
7	1	8	1
5	1	6	1
3	1	4	1
1	1	2	1
SH.	ISS.	SH.	ISS.

ISSUE Nos. OF OTHER SHEETS AT TIME OF ISSUING THIS SHEET

ICL

MATERIAL **NONE**
SURFACE TREATMENT **NONE**
HEAT TREATMENT **NONE**

TITLE **VARIANTS LIST**
7072/1-8 TELE-TYPEWRITERS

V
CAT. SHEET 1 CONTINUED ON SHEET 2

DRG. No. **5048800**

UNLESS OTHERWISE STATED, THE FOLLOWING APPLY: DO NOT SCALE. THIRD ANGLE PROJECTION. ALL DIMENSIONS IN INCHES. REMOVE ALL BURRS AND UNNECESSARY SHARP EDGES. INTERNAL CORNERS TO HAVE 0.1 MAX. RADIUS. TOLERANCE ON ALL LINEAR DIMENSIONS: ±.01. DIRECTION OF GRAIN UNIMPORTANT.

DRG. No.

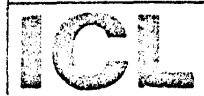
DATE
PROC'D
DATE
DES. AUTH.
CHKD.
DATE

VARIANT	7072/1	7072/2	7072/3	7072/4	7072/5	7072/6	7072/7	7072/8	FI 219	FI 220	FI 290	FI 214	FI 215	FI 221
V31			•						•			•	•	
V32				•					•			•	•	
V33			•						•	•		•	•	
V34				•					•	•		•	•	
V35			•						•		•	•	•	
V36				•					•		•	•	•	
V37					•				•					
V38						•			•					
V39					•				•					•
V40						•			•					•
V41					•				•			•		
V42						•			•			•		
V43					•				•			•		•
V44						•			•			•		•
V45							•		•	•		•		•
V46								•	•			•		•
V47							•		•			•		•
V48								•	•			•		•
V49							•		•			•		•
V50								•	•			•		•
V51							•		•			•		•
V52								•	•			•		•
V53							•		•			•		•
V54								•	•			•		•
V55							•		•			•		•
V56								•	•			•		•
V57							•		•			•		•
V58								•	•			•		•
V59							•		•			•		•
V60								•	•			•		•

LS CHANGES
 1 { XR 512-2
 5-69
 P486-3
 12-69

1	1	12	
2	1	10	
7	1	8	
5	1	6	
3	1	4	
1	1	2	
SH.	ISS.	SH.	ISS.

ISSUE Nos. OF OTHER SHEETS AT TIME OF ISSUING THIS SHEET



MATERIAL	NONE
SURFACE TREATMENT	NONE
HEAT TREATMENT	NONE

TITLE
VARIANTS LIST
7072/1-8 TELE-TYPEWRITERS

V CAT.
 SHEET 2
 CONTINUED ON
 SHEET 3

DRG. No. **5048800**

UNLESS OTHERWISE STATED, THE FOLLOWING APPLY DO NOT SCALE. THIRD ANGLE PROJECTION. ALL DIMENSIONS IN INCHES. REMOVE ALL BURRS AND UNNECESSARY SHARP EDGES. INTERNAL CORNERS TO HAVE .01 MAX. RADIUS. TOLERANCE ON ALL LINEAR DIMENSIONS ± .01. DIRECTION OF GRAIN UNIMPORTANT

DRG. No. 5048800

ISS. CHANGES

2 10069 11-70
REDESKIN

1	12		
9	10		
7	8		
5	6		
3	4		
1	2		
SH.	ISS.	SH.	ISS.

ISSUE Nos. OF OTHER SHEETS AT TIME OF ISSUING THIS SHEET

ICL

VARIANT	7072/1	7072/2	7072/3	7072/4	7072/5	7072/6	7072/7	7072/8		F1307	F1220	F1290	Fi214	F1215	F1221
V61	•									•					
V62	•									•				•	
V63		•								•				•	
V64		•								•				•	
V65			•							•				•	
V66			•							•				•	
V67			•							•			•	•	
V68			•							•			•	•	
V69				•						•				•	
V70				•						•				•	
V71				•						•			•	•	
V72				•						•			•	•	
V73					•					•				•	
V74					•					•				•	
V75						•				•				•	
V76						•				•				•	
V77							•			•				•	
V78							•			•				•	
V79							•			•			•	•	
V80							•			•			•	•	
V81								•		•				•	
V82								•		•			•	•	
V83								•		•			•	•	
V84								•		•			•	•	

DR. N. WOODS DATE 12-70 CHKD. HAWKES DES. AUTH. Shaugh DATE PROD. DATE

MATERIAL NONE
 SURFACE TREATMENT NONE
 HEAT TREATMENT NONE

TITLE VARIANTS LIST
 7072/1-8 TELE-TYPEWRITERS

SHEET 3 CONTINUED ON SHEET 4
 V CAT.

DRG. No. 5048800

5048800 103

MACHINE VARIANTS LIST						MACHINE TYPE NUMBER		V1	V2	V3	V4	V5	V6	V7		
						VARIANT PART NUMBER		5048865	5048866	5048867	5048868	5048869	5048870	5048871		
ISS.	SER.	ASSEMBLY No.	ITEM	PART No.	C.	DESCRIPTION	ISS.	QTY.	ISS.	QTY.	ISS.	QTY.	ISS.	QTY.	ISS.	QTY.
				5048801	A	TYPEWRITER G. A.			INSTRUCTIONS FOR ASSEMBLY.							
				5048802	D	BASIC KIT LIST. PPL.		1		1		1		1		1
1	5048801	1	5048803	B		TYPEWRITER. 7072/1 + F1219		1								
2	5048801	2	5048804	B		TYPEWRITER. 7072/2 + F1219			1							
3	5048801	3	5048805	B		TYPEWRITER 7072/1 + F1219 + F1220				1						
4	5048801	4	5048806	B		TYPEWRITER 7072/2 + F1219 + F1220					1					
5	5048801	5	5048807	B		TYPEWRITER. 7072/1 + F1219 + F1290.						1				
6	5048801	6	5048808	B		TYPEWRITER. 7072/2 + F1219 + F1290.							1			
7	5048801	7	5048809	B		TYPEWRITER 7072/1 + F1219 + F1215.										1
CUSTOMER SELECT ITEMS																
8	5048801	65	5038024	D		MODEM INTERFACE CABLEFORMS COMPOSITE DRAWING		1		1		1		1		1

DRAWN BY R. LOGAN DATE 8-69 NOTES RICHES

ISSUE	1	1	2														
C.N.	YR512-2	P486-3	10069														
DATE	8-69	12-69	12-70														

	7072/1-8 TELE- TYPEWRITERS	5048800	/2	4	V	ISSUE: 1 1 2 • 2 2 2 2 2 2 2 2 2 2 2 2
			ISSUE	SHEET	CAT.	SHEET 1 2 3 4 5 6 7 8 9 10 11 12 13 14 15 16 17 18 19 20
	ISSUE NUMBERS OF OTHER SHEETS AT TIME OF ISSUING THIS SHEET					

5-11-8200

7-4-4

MACHINE VARIANTS LIST						MACHINE TYPE NUMBER →		V8	V9	V10	V11	V12	V13	V14		
						VARIANT PART NUMBER →		5048872	5048873	5048874	5048875	5048876	5048877	5048878		
ISS.	SER.	ASSEMBLY No.	ITEM	PART No.	C	DESCRIPTION	ISS.	QTY.	ISS.	QTY.	ISS.	QTY.	ISS.	QTY.	ISS.	QTY.
				5048801	A	TYPEWRITER G.A.										
				5048802	D	BASIC KIT LIST, P.P.L.		1		1		1		1		1
9	5048801	8	5048810	B	TYPEWRITER 7072/2 + F1219 + F1215.		1									
10	5048801	9	5048811	B	TYPEWRITER 7072/1 + F1219 + F1220 + F1215.				1							
11	5048801	10	5048812	B	TYPEWRITER 7072/2 + F1219 + F1220 + F1215.					1						
12	5048801	11	5048813	B	TYPEWRITER 7072/1 + F1219 + F1290 + F1215						1					
13	5048801	12	5048814	B	TYPEWRITER 7072/2 + F1219 + F1290 + F1215							1				
14	5048801	13	5048815	B	TYPEWRITER 7072/3 + F1219									1		
15	5048801	14	5048816	B	TYPEWRITER 7072/4 + F1219											1
CUSTOMER SELECT ITEMS																
8	5048801	65	5038024	D	MODEM INTERFACE CABLEFORMS COMPOSITE DRAWING		1		1		1		1		1	

DRAWN BY R. LOGAN DATE 8-69 NOTES RICHES

ISSUE	1	1	2
C.N.	XRS12-21486-3	10069	
DATE	8-69	12-69	12-70

	7072/1-8 TELE - TYPEWRITERS	5048800	/2	5	V	ISSUE: 1 1 2 2 • 2 2 2 2 2 2 2 2 2 2
						SHEET 1 2 3 4 5 6 7 8 9 10 11 12 13 14 15 16 17 18 19 20
						ISSUE NUMBERS OF OTHER SHEETS AT TIME OF ISSUING THIS SHEET

MACHINE VARIANTS LIST						MACHINE TYPE NUMBER →		V15	V16	V17	V18	V19	V20	V21		
						VARIANT PART NUMBER →		5048879	5048880	5048881	5048882	5048883	5048884	5048885		
ISS.	SER.	ASSEMBLY No.	ITEM	PART No.	C	DESCRIPTION	ISS.	QTY.	ISS.	QTY.	ISS.	QTY.	ISS.	QTY.	ISS.	QTY.
				5048801	A	TYPEWRITER G.A.					INSTRUCTIONS FOR ASSEMBLY					
				5048802	D	BASIC KIT LIST. P.P.L.		1		1		1		1		1
16	5048801	15	5048817	B		TYPEWRITER. 7072/3 + F1219 + F1220.		1								
17	5048801	16	5048818	B		TYPEWRITER. 7072/4 + F1219 + F1220.				1						
18	5048801	17	5048819	B		TYPEWRITER. 7072/3 + F1219 + F1220.					1					
19	5048801	18	5048820	B		TYPEWRITER. 7072/4 + F1219 + F1220.						1				
20	5048801	19	5048821	B		TYPEWRITER. 7072/3 + F1219 + F1215.							1			
21	5048801	20	5048822	B		TYPEWRITER. 7072/4 + F1219 + F1215.								1		
22	5048801	21	5048823	B		TYPEWRITER. 7072/3 + F1219 + F1220 + F1215.										1
CUSTOMER SELECT ITEMS																
8	5048801	65	5038024	D		MODEM INTERFACE CABLEFORMS COMPOSITE DRAWING		1		1		1		1		1

DRAWN BY R. LOGAN DATE 8-69 NOTES RICHES

ISSUE	1	1	2
C.N.	RS12-2	RS36-3	10069
DATE	8-69	12-69	12-70

	7072/1-8	5048800	/2	6	V	ISSUE: 1 1 2 2 2 • 2 2 2 2 2 2 2 2
	TELE-					SHEET 1 2 3 4 5 6 7 8 9 10 11 12 13 14 15 16 17 18 19 20
	TYPEWRITERS					ISSUE NUMBERS OF OTHER SHEETS AT TIME OF ISSUING THIS SHEET

5748000
K9.5

MACHINE VARIANTS LIST						MACHINE TYPE NUMBER →		V22	V23	V24	V25	V26	V27	V28		
						VARIANT PART NUMBER →		5048886	5048887	5048888	5048889	5048890	5048891	5048892		
ISS.	SER.	ASSEMBLY No.	ITEM	PART No.	C.	DESCRIPTION	ISS.	QTY.	ISS.	QTY.	ISS.	QTY.	ISS.	QTY.	ISS.	QTY.
				5048801	A	TYPEWRITER G.A.			INSTRUCTIONS FOR ASSEMBLY							
				5048802	D	BASIC KIT LIST. PPL.		1		1		1		1		1
23	5048801	22	5048824	B	TYPEWRITER 7072/4 + F1219 + F1220 + F1215			1								
24	5048801	23	5048825	B	TYPEWRITER. 7072/3 + F1219 + F1290 + F1215				1							
25	5048801	24	5048826	B	TYPEWRITER. 7072/4 + F1219 + F1290 + F1215					1						
26	5048801	25	5048827	B	TYPEWRITER. 7073/3 + F1219 + F1214.						1					
27	5048801	26	5048828	B	TYPEWRITER. 7072/4 + F1219 + F1214							1				
28	5048801	27	5048829	B	TYPEWRITER. 7072/3 + F1219 + F1220 + F1214									1		
29	5048801	28	5048830	B	TYPEWRITER. 7072/4 + F1219 + F1220 + F1214											1
CUSTOMER SELECT ITEMS																
8	5048801	65	5038024	D	MODEM INTERFACE CABLEFORMS COMPOSITE DRAWING			1		1		1		1		1

DRAWN BY R. LOGAN DATE 8-69 NOTES RICHES

ISSUE	1	1	2														
C.N.	XRS12-2	P486-3	10069														
DATE	8-69	12-69	12-70														

	7072/1-8 TELE- TYPEWRITERS	5048800	/ 2	7	V	ISSUE: 1 1 2 2 2 2 • 2 2 2 2 2 2 2
						SHEET 1 2 3 4 5 6 7 8 9 10 11 12 13 14 15 16 17 18 19 20
						ISSUE NUMBERS OF OTHER SHEETS AT TIME OF ISSUING THIS SHEET

MACHINE VARIANTS LIST						MACHINE TYPE NUMBER →		V29	V30	V31	V32	V33	V34	V35			
						VARIANT PART NUMBER →		5048893	5048894	5048895	5048896	5048897	5048898	5048899			
ISS.	SER.	ASSEMBLY No.	ITEM	PART No.	C	DESCRIPTION	ISS.	QTY.	ISS.	QTY.	ISS.	QTY.	ISS.	QTY.	ISS.	QTY.	
				5048801	A	TYPEWRITER G.A.			INSTRUCTIONS FOR ASSEMBLY								
				5048802	D	BASIC KIT LIST. P.P.L.		1		1		1		1		1	
30	5048801	29	5048831	B	TYPEWRITER. 7072/3 +F1219 + F1290 + F1214		1										
31	5048801	30	5048832	B	TYPEWRITER. 7072/4 +F1219 + F1290 + F1214				1								
32	5048801	31	5048833	B	TYPEWRITER. 7072/3 +F1219 + F1214 + F1215					1							
33	5048801	32	5048834	B	TYPEWRITER. 7072/4 +F1219 + F1214 + F1215						1						
34	5048801	33	5048835	B	TYPEWRITER 7072/3 +F1219 + F1220 + F1214 + F1215							1					
35	5048801	34	5048836	B	TYPEWRITER. 7072/4 +F1219 + F1220 + F1214 + F1215									1			
36	5048801	35	5048837	B	TYPEWRITER. 7072/3 +F1219 + F1290 + F1214 + F1215											1	
CUSTOMER SELECT ITEMS																	
8	5048801	65	5038024	D	MODEM INTERFACE CABLEFORM COMPOSITE DRAWING.		1		1		1		1		1		1

DRAWN BY R LOGAN DATE 8-69 NOTES RICHES

ISSUE		1	2															
C.N.	XR512-2/P486-3/10069																	
DATE	8-69	12-69	12-70															

	7072/1-B	5048800	/ 2	8	V	ISSUE: 1 1 2 2 2 2 2 • 2 2 2 2 2 2 2
	TELE-					SHEET 1 2 3 4 5 6 7 8 9 10 11 12 13 14 15 16 17 18 19 20
	TYPEWRITERS					ISSUE NUMBERS OF OTHER SHEETS AT TIME OF ISSUING THIS SHEET

MACHINE VARIANTS LIST						MACHINE TYPE NUMBER	V36	V37	V38	V39	V40	V41	V42			
						VARIANT PART NUMBER	5049056	5049057	5049058	5049059	5049060	5049061	5049062			
ISS.	SER.	ASSEMBLY No.	ITEM	PART No.	C	DESCRIPTION	ISS.	QTY.	ISS.	QTY.	ISS.	QTY.	ISS.	QTY.	ISS.	QTY.
				5048801	A	TYPEWRITER G. A.			INSTRUCTIONS FOR ASSEMBLY.							
				5048802	D	BASIC KIT LIST. PPL.		1		1		1		1		1
37	5048801	36	5048838	B	TYPEWRITER. 7072/4 + F1219 + F1220 + F1214 + F1215		1									
38	5048801	37	5048839	B	TYPEWRITER. 7072/5 + F1219				1							
39	5048801	38	5048840	B	TYPEWRITER 7072/6 + F1219					1						
40	5048801	39	5048841	B	TYPEWRITER. 7072/5 + F1219 + F1221						1					
41	5048801	40	5048842	B	TYPEWRITER. 7072/6 + F1219 + F1221							1				
42	5048801	41	5048843	B	TYPEWRITER. 7072/5 + F1219 + F1215										1	
43	5048801	42	5048844	B	TYPEWRITER. 7072/6 + F1219 + F1215.											1
CUSTOMER SELECT ITEMS																
8	5048801	65	5038024	D	MODEM INTERFACE CABLEFORMS COMPOSITE DRAWING.		1		1		1		1		1	

DRAWN BY R. LOGAN DATE 8-69 NOTES RICHES

ISSUE 1 1 2
 C.N. 1R512-2 P486-3 10069
 DATE 8-69 12-69 12-70

ICT 7072/1-B TELE-TYPEWRITERS
 5048800 / 2 9 V
 ISSUE SHEET CAT.

ISSUE: 1 1 2 2 2 2 2 2 2 • 2 2 2 2 2 2
 SHEET 1 2 3 4 5 6 7 8 9 10 11 12 13 14 15 16 17 18 19 20
 ISSUE NUMBERS OF OTHER SHEETS AT TIME OF ISSUING THIS SHEET

DRAWN BY R LOGAN DATE 8-69 NOTES RICNES

MACHINE VARIANTS LIST						MACHINE TYPE NUMBER	V50	V51	V52	V53	V54	V55	V56			
						VARIANT PART NUMBER	5049070	5049071	5049072	5049073	5049074	5049075	5049076			
ISS.	SER.	ASSEMBLY No.	ITEM	PART No.	C	DESCRIPTION	ISS.	QTY.	ISS.	QTY.	ISS.	QTY.	ISS.	QTY.	ISS.	QTY.
				5048801	A	TYPEWRITER G.A			INSTRUCTIONS FOR ASSEMBLY.							
				5048802	D	BASIC KIT LIST. P.P.L.		1		1		1		1		1
51	5048801	50	5048852	B	TYPEWRITER 7072/8 + F1219 + F1215		1									
52	5048801	51	5048853	B	TYPEWRITER 7072/7 + F1219 + F1215 + F1221				1							
53	5048801	52	5048854	B	TYPEWRITER 7072/8 + F1219 + F1215 + F1221					1						
54	5048801	53	5048855	B	TYPEWRITER 7072/7 + F1219 + F1214						1					
55	5048801	54	5048856	B	TYPEWRITER 7072/8 + F1219 + F1214							1				
56	5048801	55	5048857	B	TYPEWRITER 7072/7 + F1219 + F1214 + F1221								1			
57	5048801	56	5048858	B	TYPEWRITER 7072/8 + F1219 + F1214 + F1221											1
CUSTOMER SELECT ITEMS																
8	5048801	65	5038024	D	MODEM INTERFACE (CABLEFORM) COMPOSITE DRAWING		1		1		1		1		1	

ISSUE	1	1	2
C.N.	XR512-2	RFB6-3	100GS
DATE	8-69	12-69	12-70

I.C.T.	7072/1-8 TELE- TYPEWRITERS	5048800	/ 2	11	V	ISSUE: 1 1 2 2 2 2 2 2 2 2 • 2 2 2 2
			ISSUE	SHEET	CAT.	SHEET 1 2 3 4 5 6 7 8 9 10 11 12 13 14 15 16 17 18 19 20
	ISSUE NUMBERS OF OTHER SHEETS AT TIME OF ISSUING THIS SHEET					

504880

MACHINE VARIANTS LIST						MACHINE TYPE NUMBER →		V57	V58	V59	V60	V61	V62	V63					
						VARIANT PART NUMBER →		5049077	5049078	5049079	5049080	5066701	5066702	5066703					
ISS.	SER.	ASSEMBLY No.	ITEM	PART No.	C	DESCRIPTION		ISS.	QTY.	ISS.	QTY.	ISS.	QTY.	ISS.	QTY.	ISS.	QTY.		
				5048801	A	TYPEWRITER G.A				INSTRUCTIONS FOR ASSEMBLY									
				5048802	D	BASIC KIT LIST. P.P.L.			1		1		1	2	1	2	1	2	
58	5048801	57	5048859	B	TYPEWRITER 7072/7 + F1219 + F1214 + F1215			1											
59	5048801	58	5048860	B	TYPEWRITER 7072/8 + F1219 + F1214 + F1215				1										
60	5048801	59	5048861	B	TYPEWRITER 7072/7 + F1219 + F1214 + F1215 + F1221					1									
61	5048801	60	5048862	B	TYPEWRITER 7072/8 + F1219 + F1214 + F1215 + F1221						1								
62	5048801	66	5059855	B	TYPEWRITER 7072/1 + F1307							2	1						
63	5048801	67	5059856	B	TYPEWRITER 7072/1 + F1307 + F1215									2	1				
64	5048801	68	5059857	B	TYPEWRITER 7072/2 + F1307											2	1		
CUSTOMER SELECT ITEMS																			
8	5048801	65	5038024	D	MODEM INTERFACE CABLEFORMS COMPOSITE DRAWING			1		1		1		1	2	1	2	1	

DRAWN BY R LOGAN DATE 8-69 NOTES RICHES

ISSUE	1	1	2
C.N.	KRS12-2	PLS6-3	10069
DATE	8-69	12-69	12-70

	7072/1-8 TELE-TYPEWRITERS	5048800 / 2	12	V	ISSUE: 1 1 2 2 2 2 2 2 2 2 2 2 2 2 2
	ISSUE				SHEET 1 2 3 4 5 6 7 8 9 10 11 12 13 14 15 16 17 18 19 20
	ISSUE NUMBERS OF OTHER SHEETS AT TIME OF ISSUING THIS SHEET				

DRAWN BY WOODS DATE 11-70 NOTES CIP HAWKES MASTON.

V64 V65 V66 V67 V68 V69 V70

MACHINE VARIANTS LIST						MACHINE TYPE NUMBER		V64		V65		V66		V67		V68		V69		V70	
						VARIANT PART NUMBER		5066704		5066705		5066706		5066707		5066708		5066709		5066710	
ISS.	SER.	ASSEMBLY No.	ITEM	PART No.	C.	DESCRIPTION		ISS.	QTY.	ISS.	QTY.	ISS.	QTY.	ISS.	QTY.	ISS.	QTY.	ISS.	QTY.	ISS.	QTY.
				5048801	A	TYPEWRITER G.A.				INSTRUCTIONS FOR ASSEMBLY											
				5048802	D	BASIC KIT LIST P.P.L			1		1		1		1		1		1		1
	65	5048801	69	5059853	B	TYPEWRITER 7072/2 +F1307+F1215			1												
	66	5048801	70	5059859	B	TYPEWRITER 7072/3 +F1307					1										
	67	5048801	71	5059860	B	TYPEWRITER 7072/3 +F1307+F1215							1								
	68	5048801	72	5059861	B	TYPEWRITER 7072/3 +F1307+F1214									1						
	69	5048801	73	5059862	B	TYPEWRITER 7072/3 +F1307+F1214+F1215											1				
	70	5048801	74	5059863	B	TYPEWRITER 7072/4 +F1307													1		
	71	5048801	75	5059864	B	TYPEWRITER 7070/4 +F1307+F1215															1
<u>CUSTOMER SELECT ITEMS</u>																					
	8	5048801	65	5038024	D	MODEM INTERFACE CABLEFORMS COMPOSITE DRAWING			1		1		1		1		1		1		1

ISSUE	24																				
C.N.	10000																				
DATE	11-70																				

I.O.T.	7072/1-B	5048800	/2	13	V	ISSUE: 1 1 2 2 2 2 2 2 2 2 2 2 2 2 2 2 2 2 2 2
	TELE-					SHEET 1 2 3 4 5 6 7 8 9 10 11 12 13 14 15 16 17 18 19 20
	TYPEWRITERS					ISSUE NUMBERS OF OTHER SHEETS AT TIME OF ISSUING THIS SHEET

MASTER

DRAWN BY WOODS DATE 11-70 NOTES CHW HAWKES MASTER

V78 V79 V80 V81 V82 V83 V84

MACHINE VARIANTS LIST						MACHINE TYPE NUMBER →																	
						VARIANT PART NUMBER →		5066718		5066719		5066720		5066721		5066722		5066723		5066724			
ISS.	SER.	ASSEMBLY No.	ITEM	PART No.	C.	DESCRIPTION		ISS.	QTY.	ISS.	QTY.	ISS.	QTY.	ISS.	QTY.	ISS.	QTY.	ISS.	QTY.	ISS.	QTY.		
				5048801	A	TYPEWRITER G.A.				INSTRUCTIONS FOR ASSEMBLY													
				5048802	D	BASIC KIT LIST P.P.L			1		1			1		1		1		1		1	
	79	5048801	83	5059872	B	TYPEWRITER 7072/7 +F1307+F1215			1														
	80	5048801	84	5059873	B	TYPEWRITER 7072/7 +F1307+F1214					1												
	81	5048801	85	5059874	B	TYPEWRITER 7072/7 +F1307+F1214+F1215							1										
	82	5048801	86	5059875	B	TYPEWRITER 7072/8 +F1307								1									
	83	5048801	87	5059876	B	TYPEWRITER 7072/8 +F1307+F1215										1							
	84	5048801	88	5059877	B	TYPEWRITER 7072/8 +F1307+F1214												1					
	85	5048801	89	5059878	B	TYPEWRITER 7072/8 +F1307+F1214+F1215																1	
						CUSTOMER SELECT ITEMS																	
	B	5048801	65	5038624	D	MODEM INTERFACE CABLEFORMS COMPOSITE DRAWING			1		1		1		1		1		1		1		

ISSUE 247
 C.N. 15069
 DATE 11-70

	7072/1-S	5048800	/2	15	V	ISSUE: 1 1 2 2 2 2 2 2 2 2 2 2 2 2 2 2
	TELE-TYPEWRITERS					SHEET 1 2 3 4 5 6 7 8 9 10 11 12 13 14 15 16 17 18 19 20
						ISSUE NUMBERS OF OTHER SHEETS AT TIME OF ISSUING THIS SHEET

MASTER

ISS
2

CONTENTS

Section	Sheet
1 GENERAL	3
1.1 Dimensions	3
1.2 Power Requirements	3
1.3 Environmental Conditions	3
1.4 External Connexions	3
1.5 On Site Connexions	3
2 TELETYPEWRITER INSTALLATION	3
2.1 Operating Checks	3
2.2 Siting	3

RELATED DOCUMENTS

	Number
Technical Description	1111445
Maintenance Instructions	1111446
Pre-Packing Instructions	1111540
Teletype Bulletin 280B, Vol. 1. ASR	
Teletype Bulletin 280B, Vol. 2. ASR	
Teletype Bulletin 1187B, Parts. ASR	
Teletype Bulletin 281B, Vol. 1. KSR	
Teletype Bulletin 281B, Vol. 2. KSR	
Teletype Bulletin 1201B, Parts. KSR.	
Teletype Bulletin 295B, Motor Units	
Drawings:	
Model 35 Teletypewriter, ASR	LSX15257
Model 35 Teletypewriter, KSR	LSR15256
Telephone Circuits	LSR13882
Telegraph Circuits	LSO13859
Reader Step, Skip: Punch Controls and Run Out	LSO15264

155

1 GENERAL

There are eight variants of the 7072 Teletypewriter and although there are some dimensional differences the following instructions will serve as an outline for them all.

1.1 Dimensions

The overall dimensions covering the eight variants are listed below.

7072/3, 4, 7, 8 (ASR)	Width	40 inches
	Depth	24 inches
	Height	38.5 inches
	Weight	250 pounds
7072/1, 2, 5, 6 (KSR)	Width	20 inches
	Depth	24 inches
	Height	38.5 inches
	Weight	150 pounds

It should be noted that Datel 200 machines are 17 inches wider.

1.2 Power Requirements

This equipment requires a single-phase, 50 hertz power supply within the range 220 to 250 volts. Maximum continuous power consumption is 500 watts and the peak starting current for the motor is 9 amperes at 240 volts.

1.3 Environmental Conditions

The teletypewriters can operate in atmospheres having a relative humidity between 20 and 80 per cent at temperatures within the range 10 to 35 degrees centigrade.

1.4 External Connexions

Other than the mains lead the only external connexions required by the machine are the telegraph lines, 7072/1 to 4; or the modem cable, 7072/5 to 8. The modem cable is an 8-foot flying lead terminating in a 25-way connector that is permanently connected to the machine and only requires plugging into the modem. In the case of the 7072/1 to 4 variants it is necessary to remove the front stand cover to connect the telegraph lines.

1.5 On Site Connexions

- 1.5.1 7072/1 to 4 Cables used for local operation, such as between a Teletypewriter and the terminal at the processor site are three-core cables which should conform with the following requirements:

Max. Cable Length	Cable Type	Metric Equivalent
3.7	14/.0076 in	16/.20 mm
5.6	23/.0076 in	24/.20 mm
11.2	40/.0076 in	30/.25 mm
18.7	70/.0076 in	50/.25 mm

For other cable lengths the core size must be such as to limit the resistance of each core to a maximum of 250 ohms. Connexions between a Teletypewriter and a Post Office junction box should be three-core cable.

- 1.5.2 7072/5 to 8 An extension cable incorporating two 25-way connectors is available if the 8-foot flying lead from the modem is too short.

2 TELETYPEWRITER INSTALLATION

2.1 Operating Checks

- 2.1.1 7072/1 to 4 Connect the Teletypewriter to the power supply and set the control switch to Local. Operate the keyboard observing that the appropriate character is printed or function performed by each key of the keyboard. Switch off the power supply if the equipment is to be moved for final siting.
- 2.1.2 7072/5 to 8 Connect the equipment to the power supply. Operate the keyboard observing that the appropriate character is printed or function performed by each key of the keyboard. Set the control switch to On Line and check that the alarm lamp lights.
- 2.1.3 7072/3, 4, 7, 8 Feed punched tape into the reader and prove that the printer and punch function correctly.
- 2.2 Siting

Position the machine as required by the installation, bolt the front feet of the stand to the floor if required, and adjust the levelling jacks at the rear of the stand to provide a firm and level support.

2

7072/1 to 8 (All Variants)		For production use only																				
Document No.	Sht No. Title	Machine no.																				
		CN Vol No.	CN Iss No.	CN Iss No.	CN Iss No.	CN Iss No.	CN Iss No.	CN Iss No.	CN Iss No.	CN Iss No.	CN Iss No.	CN Iss No.										
1111445	Technical Description	10947	1																			
1111446	Maintenance Instructions	10557	2																			
1111639	Installation Instructions	10557	2																			
1111640	Pre-Packing Instructions	10557	2																			
5048800	General Assembly	10069	2																			
Manfctrs. Drgs.																						
295 B	Tele. Manual; Motor Units																					
2900 WD	Tele. Wir; LMU38, LMU3 Motor																					
4726 WD	Tele. Wir; Answer Back																					
5983 WD	Tele. Wir; SMD (30567)																					
6380 WD	Tele. Wir; Power Panel(199327)																					
Optional Features																						
LSD 95780	Parity Detector, Schem.																					
	Parity Detector, Assembly																					
P 15910	Parity Detector, P. I.																					

© International Computers Limited 1969 Printed in Great Britain by ICL Printing Services, Watlington

FORM 8/13113.091

12/1

7072/7 Teletypewriter			For production use only											
Manfctrs. Document No.	Sht No.	Title	Machine no.											
			CN Vol No.	CN Iss No.	CN Iss No.	CN Iss No.	CN Iss No.	CN Iss No.	CN Iss No.	CN Iss No.	CN Iss No.	CN Iss No.	CN Iss No.	Iss
280 B		Tele. Manual; Vol. 1, ASR												
280 B		Tele. Manual; Vol. 2, ASR												
1187 B		Tele. Manual; Parts, ASR												
5814 WD		Tele. Wir; Read. (LXD 804)												
6043 WD		Tele. Wir; Fric. Print. (LP 813)												
6384 WD		Tele. Schem; VSL 355												
6394 WD		Tele. Wir; LESU 13												
6395 WD		Tele. Wir; LAK 821												
6903 WD		Tele. Wir; Mode Sw. (198242)												
7584 WD		Tele. Wir; Copy Light (LAAC300)												
182630		Tele. Circuit Card												
198348		Tele. Circuit Card												

© International Computers Limited 1969 Printed in Great Britain by CL Printing Services Leamington

10/7

FORM 8/131 (2/69)

